

Anti-GMCL1 Antibody (Center)

Catalog Number: M14911

About GMCL1

Possible function in spermatogenesis. Enhances the degradation of MDM2 and increases the amount of p53 probably by modulating the nucleocytoplasmic transport (By similarity).

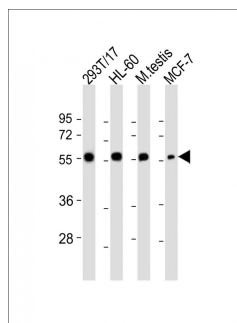
Overview

Product Name	Anti-GMCL1 Antibody (Center)
Reactive Species	Human, Mouse
Description	Boster Bio Anti-GMCL1 Antibody (Center) (Catalog # M14911). Tested in WB, IHC-P application(s). This antibody reacts with Human, Mouse.
Application	IHC-P, WB
Clonality	Polyclonal
Formulation	Purified polyclonal antibody supplied in PBS with 0.09% (W/V) sodium azide.
Storage Instructions	Maintain refrigerated at 2-8°C for up to 2 weeks. For long-term storage, store at -20°C in small aliquots to prevent freeze-thaw cycles.
Host	Rabbit
Uniprot ID	Q96IK5

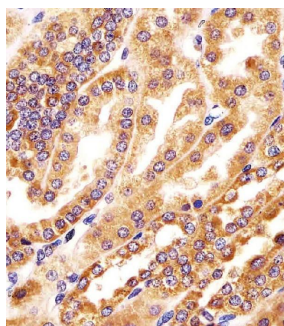
Technical Details

Immunogen	This GMCL1 antibody is generated from a rabbit immunized with a KLH conjugated synthetic peptide between 281-315 amino acids from the Central region of human GMCL1.
Predicted Reactive Species	Xenopus
Isotype	Rabbit IgG
Purification	This antibody is purified through a protein A column, followed by peptide affinity purification.
Suggested Dilutions	WB: 1:2000 IHC-P: 1:25

Anti-GMCL1 Antibody (Center) (M14911) Images



All lanes : Anti-GMCL1 Antibody (Center) at 1:2000 dilution
Lane 1: 293T/17 whole cell lysate
Lane 2: HL-60 whole cell lysate
Lane 3: mouse testis lysate
Lane 4: MCF-7 whole cell lysate
Lysates/proteins at 20 µg per lane.
Secondary Goat Anti-Rabbit IgG, (H+L), Peroxidase conjugated at 1/10000 dilution. Predicted band size : 59 kDa
Blocking/Dilution buffer: 5% NFD/MTBST.



M14911 staining GMCL1 in human kidney tissue sections by Immunohistochemistry (IHC-P -paraformaldehyde-fixed, paraffin-embedded sections). Tissue was fixed with formaldehyde and blocked with 3% BSA for 0.5 hour at room temperature; antigen retrieval was by heat mediation with a citrate buffer (pH6). Samples were incubated with primary antibody (1/25) for 1 hours at 37°C. A undiluted biotinylated goat polyvalent antibody was used as the secondary antibody.

Submit a product review to [Biocompare.com](https://www.biocompare.com)

Submit a review of this product to [Biocompare.com](https://www.biocompare.com) to receive a \$20 Amazon.com giftcard! Your reviews help your fellow scientists make the right decisions. Thank you for your contribution.



Anti-GMCL1 Antibody (Center)

For Research Use Only. Not for use in diagnostic procedures.