

Anti-Protein kinase Y linked (PRKY) Mouse Monoclonal Antibody [Clone ID: OTI3E10]

Catalog Number: M14965

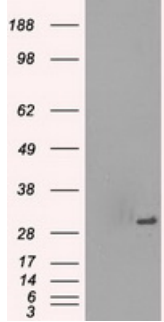
Overview

Product Name	Anti-Protein kinase Y linked (PRKY) Mouse Monoclonal Antibody [Clone ID: OTI3E10]
Reactive Species	Human
Description	Boster Bio Anti-PRKY mouse monoclonal antibody, clone OTI3E10 (formerly 3E10). Catalog# M14965. Tested in IF, IHC, WB. This antibody reacts with Human.
Application	IF, IHC, WB
Clonality	Monoclonal OTI3E10
Formulation	PBS (pH 7.3) containing 1% stabilizing protein, 50% glycerol and 0.02% sodium azide. This antibody is supplied in a stabilized formulation. Compatibility with conjugation reactions depends on the chemistry of the conjugation method used. For conjugation methods that are not compatible with the stabilizing components present in this formulation, a carrier-free antibody format is required.
Storage Instructions	Store at -20°C as received.
Host	Mouse
Uniprot ID	O43930

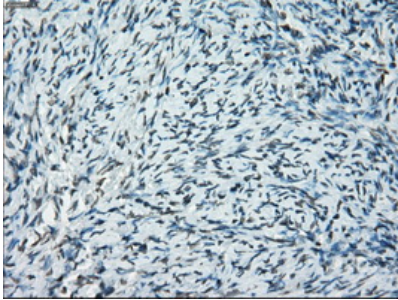
Technical Details

Immunogen	Full-length protein expressed in 293T cell transfected with human PRKY expression vector
Isotype	IgG2a
Concentration	1 mg/ml
Purification	Purified from mouse ascites fluids or tissue culture supernatant by affinity chromatography (protein A/G)
Suggested Dilutions	WB 1:500 IHC 1:50 IF 1:100

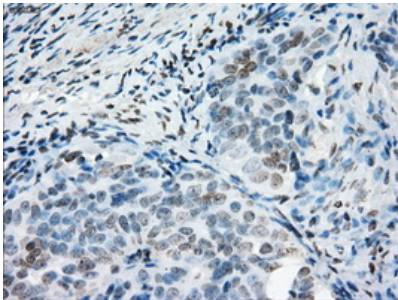
Anti-Protein kinase Y linked (PRKY) Mouse Monoclonal Antibody [Clone ID: OTI3E10] (M14965) Images



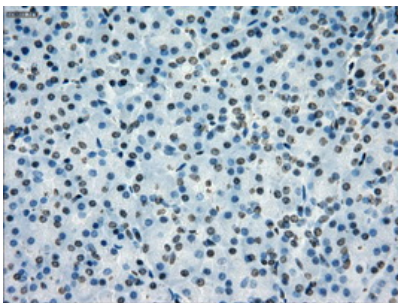
HEK293T cells were transfected with the pCMV6-ENTRY control (Left lane) or pCMV6-ENTRY PRKY (Right lane) cDNA for 48 hrs and lysed. Equivalent amounts of cell lysates (5 ug per lane) were separated by SDS-PAGE and immunoblotted with anti-PRKY.



Immunohistochemical staining of paraffin-embedded Ovary tissue within the normal limits using anti-PRKY mouse monoclonal antibody. (Heat-induced epitope retrieval by 10mM citric buffer)

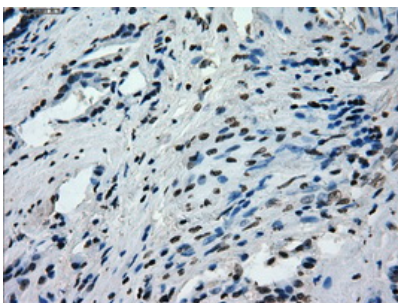
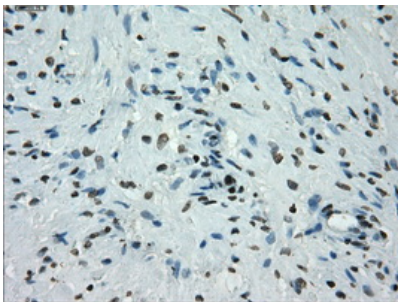
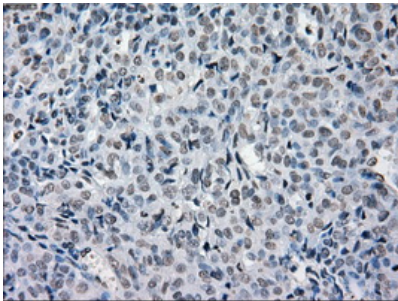
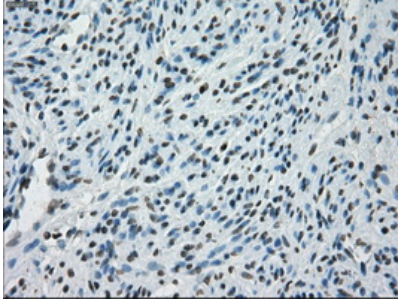
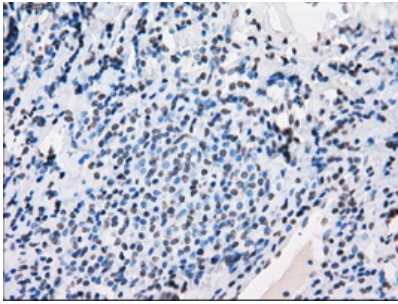


Immunohistochemical staining of paraffin-embedded Adenocarcinoma of ovary tissue using anti-PRKY mouse monoclonal antibody. (Heat-induced epitope retrieval by 10mM citric buffer)



Immunohistochemical staining of paraffin-embedded pancreas tissue within the normal limits using anti-PRKY mouse monoclonal antibody. (Heat-induced epitope retrieval by 10mM citric buffer)

Immunohistochemical staining of paraffin-embedded Carcinoma of thyroid tissue using anti-PRKY mouse monoclonal antibody. (Heat-induced epitope retrieval by 10mM citric buffer)



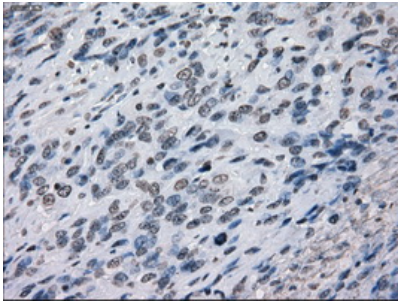
Immunohistochemical staining of paraffin-embedded endometrium tissue within the normal limits using anti-PRKymouse monoclonal antibody. (Heat-induced epitope retrieval by 10mM citric buffer)

Immunohistochemical staining of paraffin-embedded Adenocarcinoma of endometrium tissue using anti-PRKymouse monoclonal antibody. (Heat-induced epitope retrieval by 10mM citric buffer)

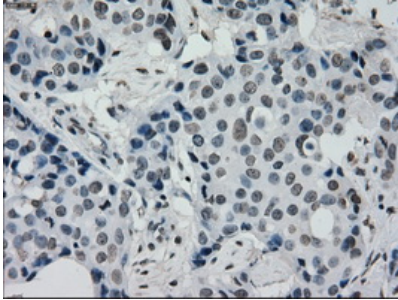
Immunohistochemical staining of paraffin-embedded prostate tissue within the normal limits using anti-PRKymouse monoclonal antibody. (Heat-induced epitope retrieval by 10mM citric buffer)

Immunohistochemical staining of paraffin-embedded Carcinoma of prostate tissue using anti-PRKymouse monoclonal antibody. (Heat-induced epitope retrieval by 10mM citric buffer)

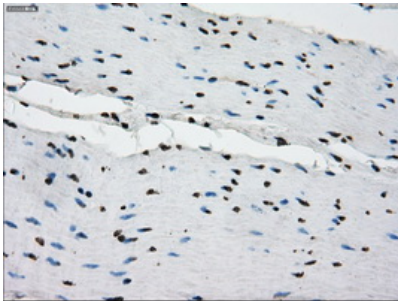
Immunohistochemical staining of paraffin-embedded Carcinoma of bladder tissue using anti-PRKymouse monoclonal antibody. (Heat-induced epitope retrieval by 10mM citric buffer)



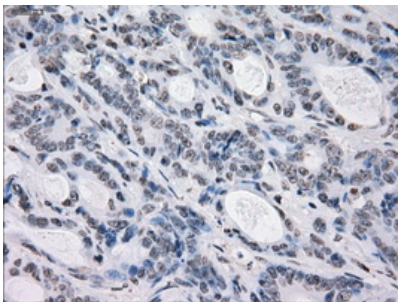
10mM citric buffer



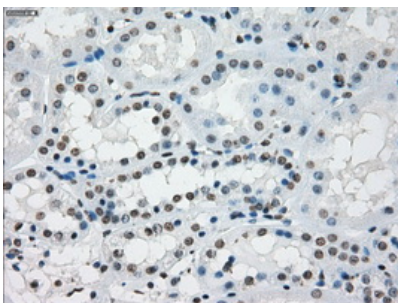
Immunohistochemical staining of paraffin-embedded Adenocarcinoma of breast tissue using anti-PRKY mouse monoclonal antibody. (Heat-induced epitope retrieval by 10mM citric buffer)



Immunohistochemical staining of paraffin-embedded colon tissue within the normal limits using anti-PRKY mouse monoclonal antibody. (Heat-induced epitope retrieval by 10mM citric buffer)

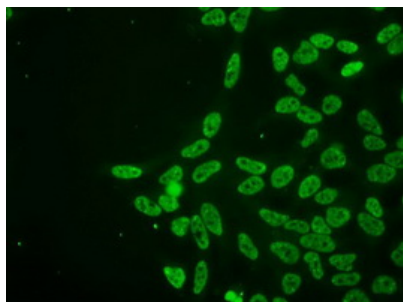
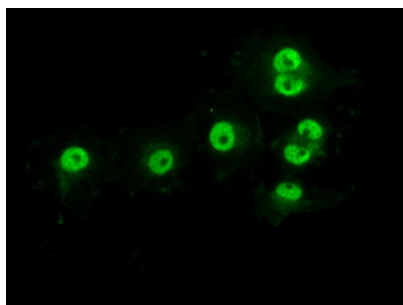


Immunohistochemical staining of paraffin-embedded Adenocarcinoma of colon tissue using anti-PRKY mouse monoclonal antibody. (Heat-induced epitope retrieval by 10mM citric buffer)



Immunohistochemical staining of paraffin-embedded Kidney tissue within the normal limits using anti-PRKY mouse monoclonal antibody. (Heat-induced epitope retrieval by 10mM citric buffer)

Anti-PRKY mouse monoclonal antibody (M14965) immunofluorescent staining of COS7 cells transiently transfected by pCMV6-ENTRY PRKY.



Immunofluorescent staining of HeLa cells using anti-PRKY mouse monoclonal antibody (M14965).

Submit a product review to [Biocompare.com](https://www.biocompare.com)

Submit a review of this product to [Biocompare.com](https://www.biocompare.com) to receive a \$20 Amazon.com giftcard! Your reviews help your fellow scientists make the right decisions. Thank you for your contribution.



Anti-Protein kinase Y linked (PRKY) Mouse Monoclonal Antibody [Clone ID: OT13E10]

For Research Use Only. Not for use in diagnostic procedures.