

Anti-Protein kinase Y linked (PRKY) Mouse Monoclonal Antibody [Clone ID: OTI3D11]

Catalog Number: M14965-1

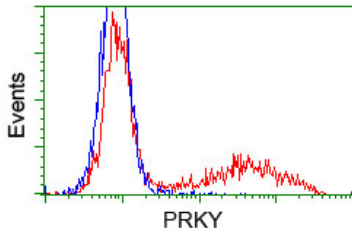
Overview

Product Name	Anti-Protein kinase Y linked (PRKY) Mouse Monoclonal Antibody [Clone ID: OTI3D11]
Reactive Species	Human
Description	Boster Bio Anti-PRKY mouse monoclonal antibody, clone OTI3D11 (formerly 3D11). Catalog# M14965-1. Tested in FC, IF. This antibody reacts with Human.
Application	Flow Cytometry, IF
Clonality	Monoclonal OTI3D11
Formulation	PBS (pH 7.3) containing 1% stabilizing protein, 50% glycerol and 0.02% sodium azide. This antibody is supplied in a stabilized formulation. Compatibility with conjugation reactions depends on the chemistry of the conjugation method used. For conjugation methods that are not compatible with the stabilizing components present in this formulation, a carrier-free antibody format is required.
Storage Instructions	Store at -20°C as received.
Host	Mouse
Uniprot ID	O43930

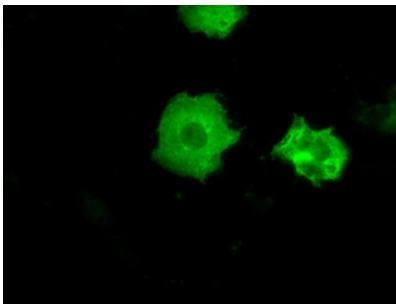
Technical Details

Immunogen	Full length human recombinant protein of human PRKY (NP_002751) produced in HEK293T cell.
Isotype	IgG1
Concentration	0.5 mg/ml
Purification	Purified from mouse ascites fluids or tissue culture supernatant by affinity chromatography (protein A/G)
Suggested Dilutions	IF 1:100 Flow Cytometry 1:100

Anti-Protein kinase Y linked (PRKY) Mouse Monoclonal Antibody [Clone ID: OTI3D11] (M14965-1) Images



HEK293T cells transfected with either pCMV6-ENTRY PRKY (Red) or empty vector control plasmid (Blue) were immunostained with anti-PRKY mouse monoclonal (M14965-1)



Anti-PRKY mouse monoclonal antibody (M14965-1) immunofluorescent staining of COS7 cells transiently transfected by pCMV6-ENTRY PRKY.

Submit a product review to Biocompare.com

Submit a review of this product to Biocompare.com to receive a \$20 Amazon.com giftcard! Your reviews help your fellow scientists make the right decisions. Thank you for your contribution.



Anti-Protein kinase Y linked (PRKY) Mouse Monoclonal Antibody [Clone ID: OTI3D11]

For Research Use Only. Not for use in diagnostic procedures.