

## Anti-ZNF286 (ZNF286A) Mouse Monoclonal Antibody [Clone ID: OTI7D2]

Catalog Number: M15027

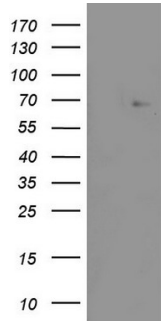
### Overview

Product Name	Anti-ZNF286 (ZNF286A) Mouse Monoclonal Antibody [Clone ID: OTI7D2]
Reactive Species	Human
Description	Boster Bio ZNF286A mouse monoclonal antibody, clone OTI7D2 (formerly 7D2). Catalog# M15027. Tested in IHC, WB. This antibody reacts with Human.
Application	IHC, WB
Clonality	Monoclonal OTI7D2
Formulation	PBS (pH 7.3) containing 1% stabilizing protein, 50% glycerol and 0.02% sodium azide. This antibody is supplied in a stabilized formulation. Compatibility with conjugation reactions depends on the chemistry of the conjugation method used. For conjugation methods that are not compatible with the stabilizing components present in this formulation, a carrier-free antibody format is required.
Storage Instructions	Store at -20°C as received.
Host	Mouse
Uniprot ID	Q9HBT8

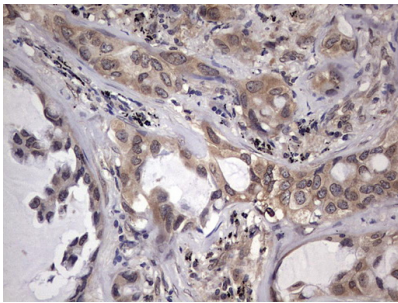
### Technical Details

Immunogen	Human recombinant protein fragment corresponding to amino acids 1-252 of human ZNF286A (NP_065703) produced in E.coli.
Isotype	IgG1
Concentration	1 mg/ml
Purification	Purified from mouse ascites fluids or tissue culture supernatant by affinity chromatography (protein A/G)
Suggested Dilutions	WB 1:2000

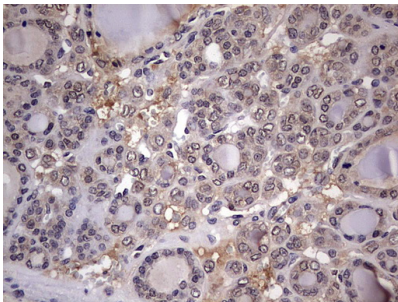
## Anti-ZNF286 (ZNF286A) Mouse Monoclonal Antibody [Clone ID: OTI7D2] (M15027) Images



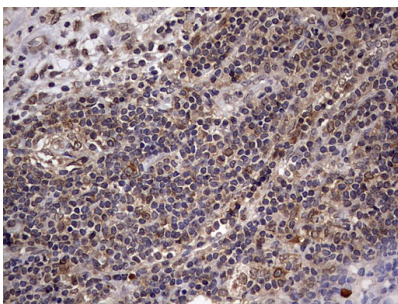
HEK293T cells were transfected with the pCMV6-ENTRY control (Left lane) or pCMV6-ENTRY ZNF286A (Right lane) cDNA for 48 hrs and lysed. Equivalent amounts of cell lysates (5 ug per lane) were separated by SDS-PAGE and immunoblotted with anti-ZNF286A.



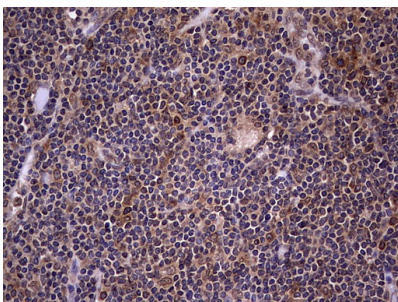
Immunohistochemical staining of paraffin-embedded Carcinoma of Human lung tissue using anti-ZNF286A mouse monoclonal antibody. (M15027) Dilution: 1:150



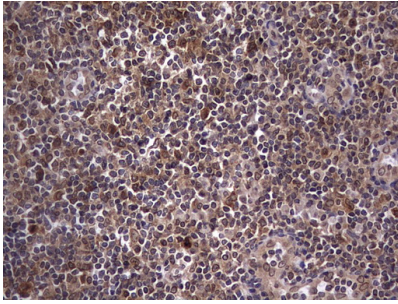
Immunohistochemical staining of paraffin-embedded Carcinoma of Human thyroid tissue using anti-ZNF286A mouse monoclonal antibody. (M15027) Dilution: 1:150



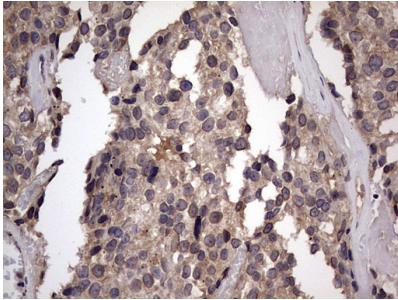
Immunohistochemical staining of paraffin-embedded Human lymph node tissue within the normal limits using anti-ZNF286A mouse monoclonal antibody. (M15027) Dilution: 1:150



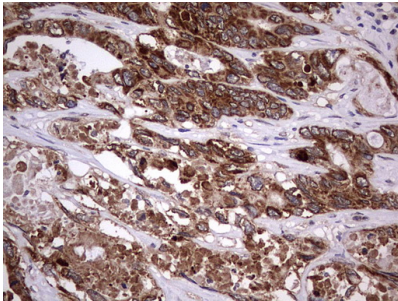
Immunohistochemical staining of paraffin-embedded Human lymphoma tissue using anti-ZNF286A mouse monoclonal antibody. (M15027) Dilution: 1:150



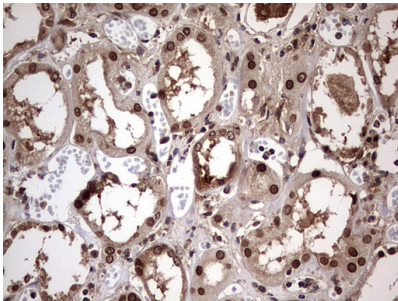
Immunohistochemical staining of paraffin-embedded Human tonsil within the normal limits using anti-ZNF286A mouse monoclonal antibody. (M15027) Dilution: 1:150



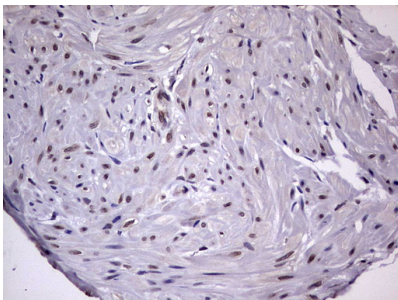
Immunohistochemical staining of paraffin-embedded Adenocarcinoma of Human breast tissue using anti-ZNF286A mouse monoclonal antibody. (M15027) Dilution: 1:150



Immunohistochemical staining of paraffin-embedded Adenocarcinoma of Human colon tissue using anti-ZNF286A mouse monoclonal antibody. (M15027) Dilution: 1:150

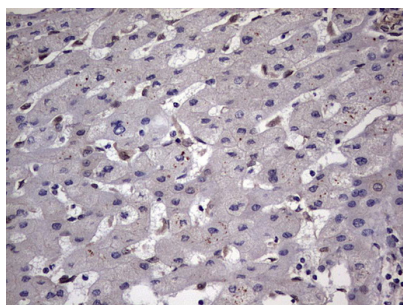


Immunohistochemical staining of paraffin-embedded Human Kidney tissue within the normal limits using anti-ZNF286A mouse monoclonal antibody. (M15027) Dilution: 1:150

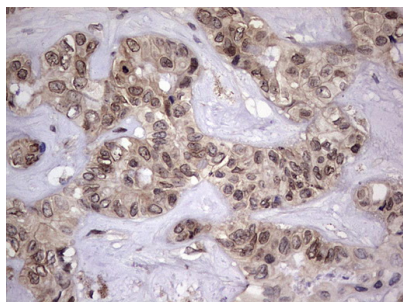


Immunohistochemical staining of paraffin-embedded Carcinoma of Human kidney tissue using anti-ZNF286A mouse monoclonal antibody. (M15027) Dilution: 1:150

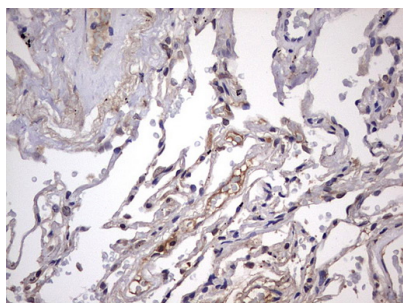
Immunohistochemical staining of paraffin-embedded Human liver tissue within the normal limits using anti-ZNF286A



mouse monoclonal antibody. (M15027) Dilution: 1:150



Immunohistochemical staining of paraffin-embedded Carcinoma of Human liver tissue using anti-ZNF286A mouse monoclonal antibody. (M15027) Dilution: 1:150



Immunohistochemical staining of paraffin-embedded Human lung tissue within the normal limits using anti-ZNF286A mouse monoclonal antibody. (M15027) Dilution: 1:150

## Submit a product review to Biocompare.com

Submit a review of this product to Biocompare.com to receive a \$20 Amazon.com giftcard! Your reviews help your fellow scientists make the right decisions. Thank you for your contribution.



Anti-ZNF286 (ZNF286A) Mouse Monoclonal Antibody [Clone ID: OTI7D2]

For Research Use Only. Not for use in diagnostic procedures.