

Anti-C21ORF56 (SPATC1L) Mouse Monoclonal Antibody [Clone ID: OTI1H6]

Catalog Number: M15055

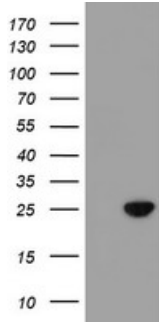
Overview

| | |
|----------------------|---|
| Product Name | Anti-C21ORF56 (SPATC1L) Mouse Monoclonal Antibody [Clone ID: OTI1H6] |
| Reactive Species | Dog, Human, Mouse, Rat |
| Description | Boster Bio C21orf56 mouse monoclonal antibody, clone OTI1H6 (formerly 1H6). Catalog# M15055. Tested in FC, IHC, WB. This antibody reacts with Human, Mouse, Rat, Dog. |
| Application | Flow Cytometry, IHC, WB |
| Clonality | Monoclonal OTI1H6 |
| Formulation | PBS (PH 7.3) containing 1% BSA, 50% glycerol and 0.02% sodium azide. |
| Storage Instructions | Store at -20°C as received. |
| Host | Mouse |
| Uniprot ID | Q9H0A9 |

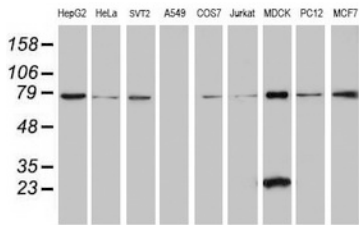
Technical Details

| | |
|---------------------|--|
| Immunogen | Full length human recombinant protein of human C21orf56 (NP_115637) produced in HEK293T cell. |
| Isotype | IgG1 |
| Concentration | 0.68 mg/ml |
| Purification | Purified from mouse ascites fluids or tissue culture supernatant by affinity chromatography (protein A/G) |
| Suggested Dilutions | Dilute the sample so that the expected range of concentrations fall within the detection range of this kit. If the expected range of concentration is unknown, a pilot test should be conducted to decide the optimal dilution ratio for your samples. Some PubMed article(s) citing the expression level of this target are as follows: |

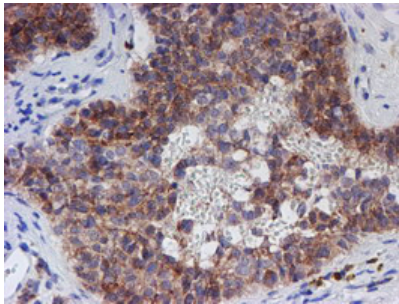
Anti-C21ORF56 (SPATC1L) Mouse Monoclonal Antibody [Clone ID: OTI1H6] (M15055) Images



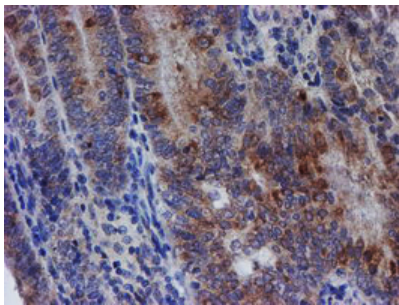
HEK293T cells were transfected with the pCMV6-ENTRY control (Left lane) or pCMV6-ENTRY C21orf56 (Right lane) cDNA for 48 hrs and lysed. Equivalent amounts of cell lysates (5 ug per lane) were separated by SDS-PAGE and immunoblotted with anti-C21orf56.



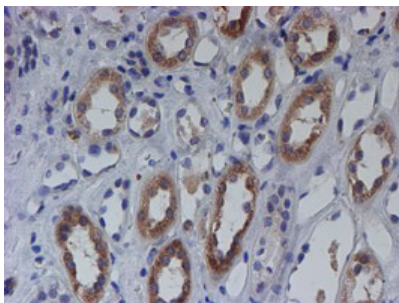
Western blot analysis of extracts (35ug) from 9 different cell lines by using anti-C21orf56 monoclonal antibody (HepG2: human; HeLa: human; SVT2: mouse; A549: human; COS7: monkey; Jurkat: human; MDCK: canine; PC12: rat; MCF7: human).



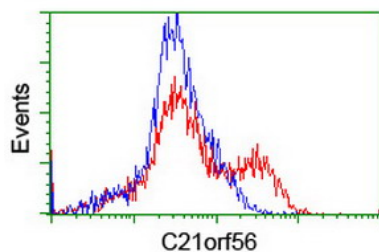
Immunohistochemical staining of paraffin-embedded Human pancreas tissue within the normal limits using anti-C21orf56 mouse monoclonal antibody. (Heat-induced epitope retrieval by 10mM citric buffer)



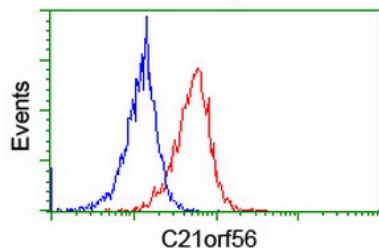
Immunohistochemical staining of paraffin-embedded Adenocarcinoma of Human endometrium tissue using anti-C21orf56 mouse monoclonal antibody. (Heat-induced epitope retrieval by 10mM citric buffer)



Immunohistochemical staining of paraffin-embedded Human Kidney tissue within the normal limits using anti-C21orf56 mouse monoclonal antibody. (Heat-induced epitope retrieval by 10mM citric buffer)



HEK293T cells transfected with either SPATC1L (Myc-DDK-tagged) overexpress plasmid (Red) or empty vector control plasmid (Blue) were immunostained by anti-C21orf56 antibody (M15055)



Flow cytometric Analysis of Jurkat cells

Submit a product review to Biocompare.com

Submit a review of this product to Biocompare.com to receive a \$20 Amazon.com giftcard! Your reviews help your fellow scientists make the right decisions. Thank you for your contribution.



Anti-C21ORF56 (SPATC1L) Mouse Monoclonal Antibody [Clone ID: OT11H6]