

Anti-LZIC Mouse Monoclonal Antibody [Clone ID: OTI3A7]

Catalog Number: M15087

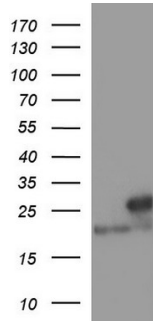
Overview

Product Name	Anti-LZIC Mouse Monoclonal Antibody [Clone ID: OTI3A7]
Reactive Species	Human, Mouse, Rat
Description	Boster Bio LZIC mouse monoclonal antibody, clone OTI3A7 (formerly 3A7). Catalog# M15087. Tested in IF, IHC, WB. This antibody reacts with Human, Mouse, Rat.
Application	IF, IHC, WB
Clonality	Monoclonal OTI3A7
Formulation	PBS (PH 7.3) containing 1% BSA, 50% glycerol and 0.02% sodium azide.
Storage Instructions	Store at -20°C as received.
Host	Mouse
Uniprot ID	Q8WZA0

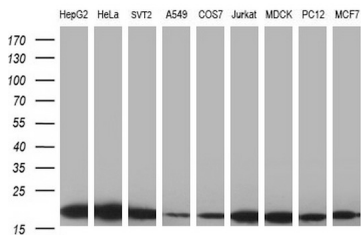
Technical Details

Immunogen	Human recombinant protein fragment corresponding to amino acids 1-190 of human LZIC (NP_115744) produced in E.coli.
Isotype	IgG1
Concentration	1 mg/ml
Purification	Purified from mouse ascites fluids or tissue culture supernatant by affinity chromatography (protein A/G)
Suggested Dilutions	Dilute the sample so that the expected range of concentrations fall within the detection range of this kit. If the expected range of concentration is unknown, a pilot test should be conducted to decide the optimal dilution ratio for your samples. Some PubMed article(s) citing the expression level of this target are as follows:

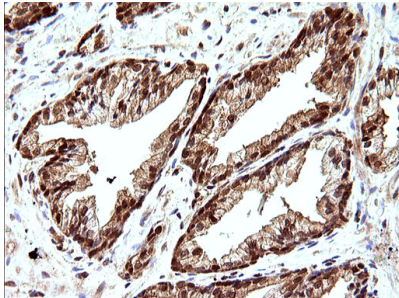
Anti-LZIC Mouse Monoclonal Antibody [Clone ID: OTI3A7] (M15087) Images



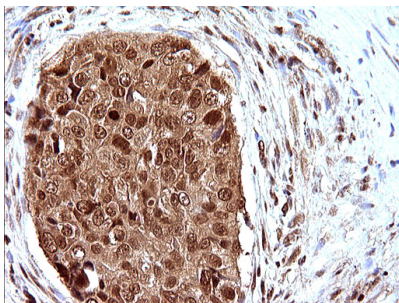
HEK293T cells were transfected with the pCMV6-ENTRY control (Left lane) or pCMV6-ENTRY LZIC (Right lane) cDNA for 48 hrs and lysed. Equivalent amounts of cell lysates (5 ug per lane) were separated by SDS-PAGE and immunoblotted with anti-LZIC.



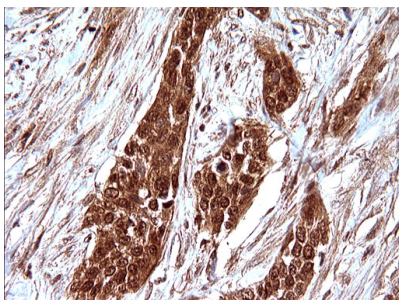
Western blot analysis of extracts (35ug) from 9 different cell lines by using anti-LZIC monoclonal antibody at 1:400 dilution (HepG2: human; HeLa: human; SVT2: mouse; A549: human; COS7: monkey; Jurkat: human; MDCK: canine; PC12: rat; MCF7: human).



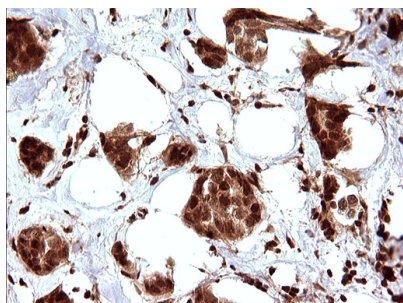
Immunohistochemical staining of paraffin-embedded Human prostate tissue within the normal limits using anti-LZIC mouse monoclonal antibody. (Heat-induced epitope retrieval by 10mM citric buffer)



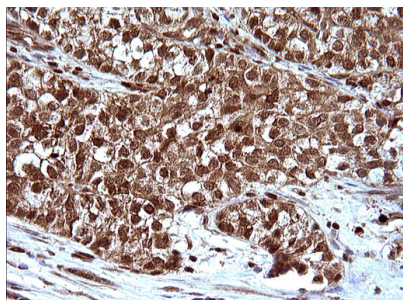
Immunohistochemical staining of paraffin-embedded Carcinoma of Human prostate tissue using anti-LZIC mouse monoclonal antibody. (Heat-induced epitope retrieval by 10mM citric buffer)



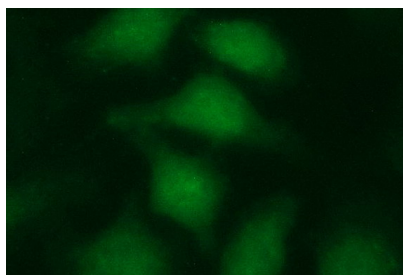
Immunohistochemical staining of paraffin-embedded Carcinoma of Human bladder tissue using anti-LZIC mouse monoclonal antibody. (Heat-induced epitope retrieval by 10mM citric buffer)



Immunohistochemical staining of paraffin-embedded Adenocarcinoma of Human breast tissue using anti-LZIC mouse monoclonal antibody. (Heat-induced epitope retrieval by 10mM citric buffer)



Immunohistochemical staining of paraffin-embedded Carcinoma of Human liver tissue using anti-LZIC mouse monoclonal antibody. (Heat-induced epitope retrieval by 10mM citric buffer)



Immunofluorescent staining of HeLa cells using anti-LZIC mouse monoclonal antibody (M15087).

Submit a product review to Biocompare.com

Submit a review of this product to Biocompare.com to receive a \$20 Amazon.com giftcard! Your reviews help your fellow scientists make the right decisions. Thank you for your contribution.



Anti-LZIC Mouse Monoclonal Antibody [Clone ID: OTI3A7]