

Anti-MRPL48 Mouse Monoclonal Antibody [Clone ID: OTI8E1]

Catalog Number: M15184

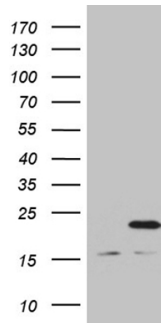
Overview

Product Name	Anti-MRPL48 Mouse Monoclonal Antibody [Clone ID: OTI8E1]
Reactive Species	Human
Description	Boster Bio MRPL48 mouse monoclonal antibody, clone OTI8E1. Catalog# M15184. Tested in IHC, WB. This antibody reacts with Human.
Application	IHC, WB
Clonality	Monoclonal OTI8E1
Formulation	PBS (pH 7.3) containing 1% stabilizing protein, 50% glycerol and 0.02% sodium azide. This antibody is supplied in a stabilized formulation. Compatibility with conjugation reactions depends on the chemistry of the conjugation method used. For conjugation methods that are not compatible with the stabilizing components present in this formulation, a carrier-free antibody format is required.
Storage Instructions	Store at -20°C as received.
Host	Mouse
Uniprot ID	Q96GC5

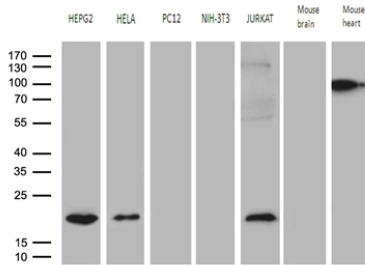
Technical Details

Immunogen	Full length human recombinant protein of human MRPL48 (NP_057139) produced in E.coli.
Isotype	IgG2a
Concentration	1 mg/ml
Purification	Purified from mouse ascites fluids or tissue culture supernatant by affinity chromatography (protein A/G)
Suggested Dilutions	WB 1:500~2000 IHC 1:150

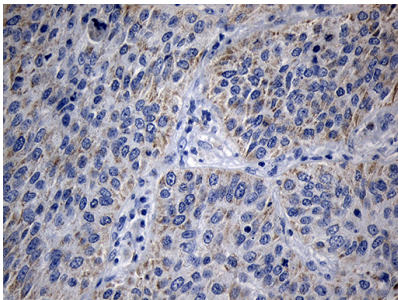
Anti-MRPL48 Mouse Monoclonal Antibody [Clone ID: OTI8E1] (M15184) Images



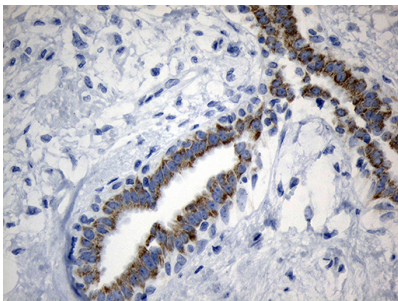
HEK293T cells were transfected with the pCMV6-ENTRY control (Left lane) or pCMV6-ENTRY MRPL48 (Right lane) cDNA for 48 hrs and lysed. Equivalent amounts of cell lysates (5 ug per lane) were separated by SDS-PAGE and immunoblotted with anti-MRPL48 (1:2000).



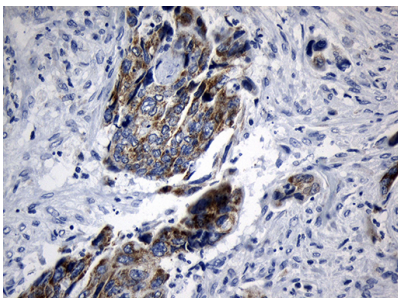
Western blot analysis of extracts (35ug) from 5 different cell lines and 2 different tissue lysates by using anti-MRPL48 monoclonal antibody (1:500).



Immunohistochemical staining of paraffin-embedded Carcinoma of Human lung tissue using anti-MRPL48 mouse monoclonal antibody. (Heat-induced epitope retrieval by 1mM EDTA in 10mM Tris buffer (pH8.5) at 120°C for 3min)



Immunohistochemical staining of paraffin-embedded Human breast tissue within the normal limits using anti-MRPL48 mouse monoclonal antibody. (Heat-induced epitope retrieval by 1mM EDTA in 10mM Tris buffer (pH8.5) at 120°C for 3min)



Immunohistochemical staining of paraffin-embedded Adenocarcinoma of Human colon tissue using anti-MRPL48 mouse monoclonal antibody. (Heat-induced epitope retrieval by 1mM EDTA in 10mM Tris buffer (pH8.5) at 120°C for 3min)

Submit a product review to Biocompare.com

Submit a review of this product to Biocompare.com to receive a \$20 Amazon.com giftcard! Your reviews help your fellow scientists make the right decisions. Thank you for your contribution.



Anti-MRPL48 Mouse Monoclonal Antibody [Clone ID: OT18E1]

For Research Use Only. Not for use in diagnostic procedures.