

## Anti-ZNF545 (ZFP82) Mouse Monoclonal Antibody [Clone ID: OTI5D8]

Catalog Number: M15326

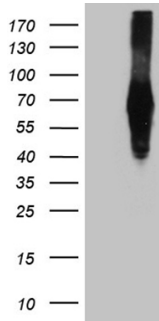
### Overview

Product Name	Anti-ZNF545 (ZFP82) Mouse Monoclonal Antibody [Clone ID: OTI5D8]
Reactive Species	Human, Mouse
Description	Boster Bio ZFP82 mouse monoclonal antibody, clone OTI5D8. Catalog# M15326. Tested in WB. This antibody reacts with Human, Mouse.
Application	WB
Clonality	Monoclonal OTI5D8
Formulation	PBS (pH 7.3) containing 1% stabilizing protein, 50% glycerol and 0.02% sodium azide. This antibody is supplied in a stabilized formulation. Compatibility with conjugation reactions depends on the chemistry of the conjugation method used. For conjugation methods that are not compatible with the stabilizing components present in this formulation, a carrier-free antibody format is required.
Storage Instructions	Store at -20°C as received.
Host	Mouse
Uniprot ID	Q8N141

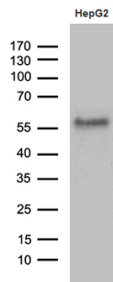
### Technical Details

Immunogen	Full length human recombinant protein of human ZFP82 (NP_597723) produced in E.coli.
Isotype	IgG2a
Concentration	1 mg/ml
Purification	Purified from mouse ascites fluids or tissue culture supernatant by affinity chromatography (protein A/G)
Suggested Dilutions	WB 1:500~2000

## Anti-ZNF545 (ZFP82) Mouse Monoclonal Antibody [Clone ID: OTI5D8] (M15326) Images



HEK293T cells were transfected with the pCMV6-ENTRY control (Left lane) or pCMV6-ENTRY ZFP82 (Right lane) cDNA for 48 hrs and lysed. Equivalent amounts of cell lysates (5 ug per lane) were separated by SDS-PAGE and immunoblotted with anti-ZFP82.



Western blot analysis of extracts (35ug) from HepG2 cell line by using anti-ZFP82 monoclonal antibody (1:500).

### Submit a product review to [Biocompare.com](https://www.biocompare.com)

Submit a review of this product to [Biocompare.com](https://www.biocompare.com) to receive a \$20 Amazon.com giftcard! Your reviews help your fellow scientists make the right decisions. Thank you for your contribution.



Anti-ZNF545 (ZFP82) Mouse Monoclonal Antibody [Clone ID: OTI5D8]

For Research Use Only. Not for use in diagnostic procedures.