

Anti-METT10D (METTL16) Mouse Monoclonal Antibody [Clone ID: OTI1A2]

Catalog Number: M15345-1

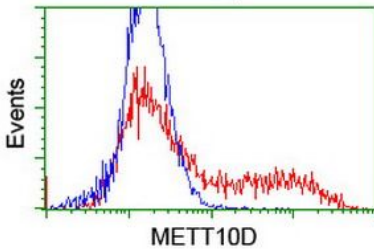
Overview

| | |
|----------------------|--|
| Product Name | Anti-METT10D (METTL16) Mouse Monoclonal Antibody [Clone ID: OTI1A2] |
| Reactive Species | Human, Mouse |
| Description | Boster Bio METT10D mouse monoclonal antibody, clone OTI1A2 (formerly 1A2). Catalog# M15345-1. Tested in FC, IF, WB. This antibody reacts with Human, Mouse. |
| Application | Flow Cytometry, IF, WB |
| Clonality | Monoclonal OTI1A2 |
| Formulation | PBS (pH 7.3) containing 1% stabilizing protein, 50% glycerol and 0.02% sodium azide. This antibody is supplied in a stabilized formulation. Compatibility with conjugation reactions depends on the chemistry of the conjugation method used. For conjugation methods that are not compatible with the stabilizing components present in this formulation, a carrier-free antibody format is required. |
| Storage Instructions | Store at -20°C as received. |
| Host | Mouse |
| Uniprot ID | Q86W50 |

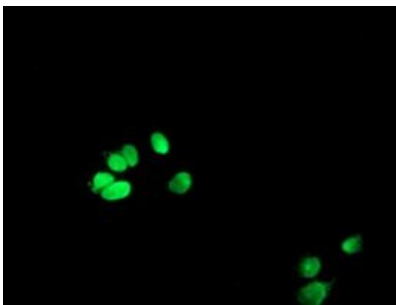
Technical Details

| | |
|---------------------|---|
| Immunogen | Full length human recombinant protein of human METT10D (NP_076991) produced in HEK293T cell. |
| Isotype | IgG1 |
| Concentration | 0.7 mg/ml |
| Purification | Purified from mouse ascites fluids or tissue culture supernatant by affinity chromatography (protein A/G) |
| Suggested Dilutions | WB 1:1000 IF 1:100 Flow Cytometry 1:100 |

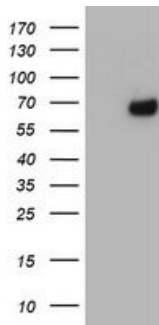
Anti-METT10D (METTL16) Mouse Monoclonal Antibody [Clone ID: OTI1A2] (M15345-1) Images



HEK293T cells transfected with either overexpress plasmid (Red) or empty vector control plasmid (Blue) were immunostained by anti-METT10D antibody (M15345-1), and then analyzed by flow cytometry.



Anti-METT10D mouse monoclonal antibody (M15345-1) immunofluorescent staining of COS7 cells transiently transfected by pCMV6-ENTRY METT10D.



HEK293T cells were transfected with the pCMV6-ENTRY control (Left lane) or pCMV6-ENTRY METT10D (Right lane) cDNA for 48 hrs and lysed. Equivalent amounts of cell lysates (5 ug per lane) were separated by SDS-PAGE and immunoblotted with anti-METT10D.

Submit a product review to [Biocompare.com](https://www.biocompare.com)

Submit a review of this product to [Biocompare.com](https://www.biocompare.com) to receive a \$20 Amazon.com giftcard! Your reviews help your fellow scientists make the right decisions. Thank you for your contribution.



Anti-METT10D (METTL16) Mouse Monoclonal Antibody [Clone ID: OTI1A2]

For Research Use Only. Not for use in diagnostic procedures.