

Anti-SUHW1 (ZNF280A) Mouse Monoclonal Antibody [Clone ID: OTI2H3]

Catalog Number: M15519

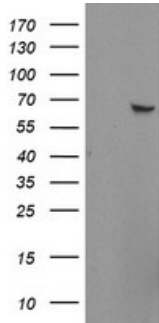
Overview

Product Name	Anti-SUHW1 (ZNF280A) Mouse Monoclonal Antibody [Clone ID: OTI2H3]
Reactive Species	Human
Description	Boster Bio ZNF280A mouse monoclonal antibody, clone OTI2H3 (formerly 2H3). Catalog# M15519. Tested in FC, WB. This antibody reacts with Human.
Application	Flow Cytometry, WB
Clonality	Monoclonal OTI2H3
Formulation	PBS (pH 7.3) containing 1% stabilizing protein, 50% glycerol and 0.02% sodium azide. This antibody is supplied in a stabilized formulation. Compatibility with conjugation reactions depends on the chemistry of the conjugation method used. For conjugation methods that are not compatible with the stabilizing components present in this formulation, a carrier-free antibody format is required.
Storage Instructions	Store at -20°C as received.
Host	Mouse
Uniprot ID	P59817

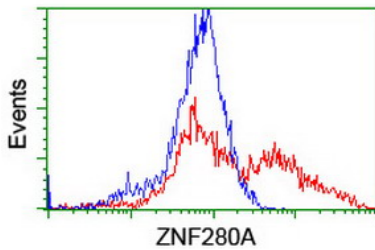
Technical Details

Immunogen	Human recombinant protein fragment corresponding to amino acids 1-333 of human ZNF280A (NP_542778) produced in E.coli.
Isotype	IgG1
Concentration	1 mg/ml
Purification	Purified from mouse ascites fluids or tissue culture supernatant by affinity chromatography (protein A/G)
Suggested Dilutions	WB: 1:1000 Flow cytometry: 1:100

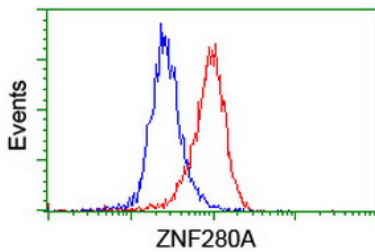
Anti-SUHW1 (ZNF280A) Mouse Monoclonal Antibody [Clone ID: OTI2H3] (M15519) Images



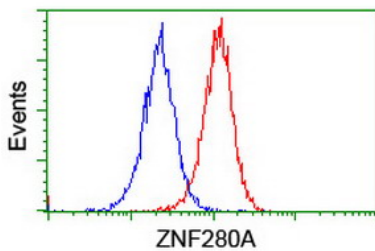
HEK293T cells were transfected with the pCMV6-ENTRY control (Left lane) or pCMV6-ENTRY ZNF280A (Right lane) cDNA for 48 hrs and lysed. Equivalent amounts of cell lysates (5 ug per lane) were separated by SDS-PAGE and immunoblotted with anti-ZNF280A.



HEK293T cells transfected with either ZNF280A (Myc-DDK-tagged) overexpress plasmid (Red) or empty vector control plasmid (Blue) were immunostained by anti-ZNF280A antibody (M15519)



Flow cytometric Analysis of HeLa cells



Flow cytometric Analysis of Jurkat cells

Submit a product review to Biocompare.com

Submit a review of this product to Biocompare.com to receive a \$20 Amazon.com giftcard! Your reviews help your fellow scientists make the right decisions. Thank you for your contribution.



Anti-SUHW1 (ZNF280A) Mouse Monoclonal Antibody [Clone ID: OTI2H3]

For Research Use Only. Not for use in diagnostic procedures.