

Anti-SUHW1 (ZNF280A) Mouse Monoclonal Antibody [Clone ID: OTI3G4]

Catalog Number: M15519-1

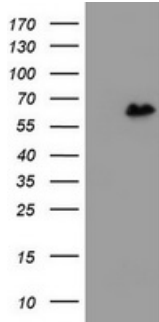
Overview

Product Name	Anti-SUHW1 (ZNF280A) Mouse Monoclonal Antibody [Clone ID: OTI3G4]
Reactive Species	Human
Description	Boster Bio ZNF280A mouse monoclonal antibody, clone OTI3G4 (formerly 3G4). Catalog# M15519-1. Tested in IHC, WB. This antibody reacts with Human.
Application	IHC, WB
Clonality	Monoclonal OTI3G4
Formulation	PBS (pH 7.3) containing 1% stabilizing protein, 50% glycerol and 0.02% sodium azide. This antibody is supplied in a stabilized formulation. Compatibility with conjugation reactions depends on the chemistry of the conjugation method used. For conjugation methods that are not compatible with the stabilizing components present in this formulation, a carrier-free antibody format is required.
Storage Instructions	Store at -20°C as received.
Host	Mouse
Uniprot ID	P59817

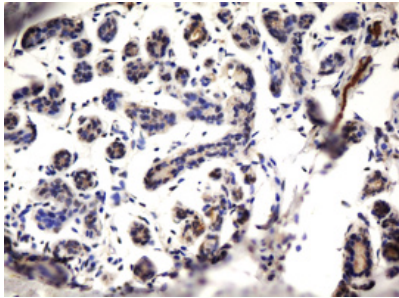
Technical Details

Immunogen	Human recombinant protein fragment corresponding to amino acids 1-333 of human ZNF280A (NP_542778) produced in E.coli.
Isotype	IgG1
Concentration	1 mg/ml
Purification	Purified from mouse ascites fluids or tissue culture supernatant by affinity chromatography (protein A/G)
Suggested Dilutions	IHC 1:150

Anti-SUHW1 (ZNF280A) Mouse Monoclonal Antibody [Clone ID: OTI3G4] (M15519-1) Images



HEK293T cells were transfected with the pCMV6-ENTRY control (Left lane) or pCMV6-ENTRY ZNF280A (Right lane) cDNA for 48 hrs and lysed. Equivalent amounts of cell lysates (5 ug per lane) were separated by SDS-PAGE and immunoblotted with anti-ZNF280A.



Immunohistochemical staining of paraffin-embedded Human breast tissue within the normal limits using anti-ZNF280A mouse monoclonal antibody. (Heat-induced epitope retrieval by 10mM citric buffer)

Submit a product review to [Biocompare.com](https://www.biocompare.com)

Submit a review of this product to [Biocompare.com](https://www.biocompare.com) to receive a \$20 Amazon.com giftcard! Your reviews help your fellow scientists make the right decisions. Thank you for your contribution.



Anti-SUHW1 (ZNF280A) Mouse Monoclonal Antibody [Clone ID: OTI3G4]

For Research Use Only. Not for use in diagnostic procedures.