

## Anti-CBWD1 Mouse Monoclonal Antibody [Clone ID: OTI3F9]

Catalog Number: M15555

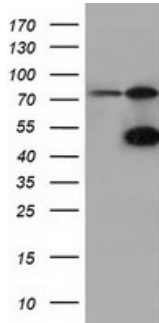
### Overview

Product Name	Anti-CBWD1 Mouse Monoclonal Antibody [Clone ID: OTI3F9]
Reactive Species	Human
Description	Boster Bio CBWD1 mouse monoclonal antibody, clone OTI3F9 (formerly 3F9). Catalog# M15555. Tested in FC, IF, IHC, WB. This antibody reacts with Human.
Application	Flow Cytometry, IF, IHC, WB
Clonality	Monoclonal OTI3F9
Formulation	PBS (pH 7.3) containing 1% stabilizing protein, 50% glycerol and 0.02% sodium azide. This antibody is supplied in a stabilized formulation. Compatibility with conjugation reactions depends on the chemistry of the conjugation method used. For conjugation methods that are not compatible with the stabilizing components present in this formulation, a carrier-free antibody format is required.
Storage Instructions	Store at -20°C as received.
Host	Mouse
Uniprot ID	Q9BRT8

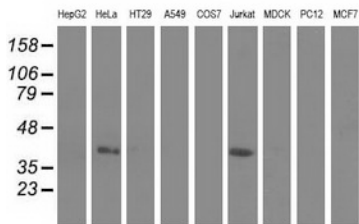
### Technical Details

Immunogen	Full length human recombinant protein of human CBWD1 (NP_060961) produced in HEK293T cell.
Isotype	IgG2b
Concentration	0.8 mg/ml
Purification	Purified from mouse ascites fluids or tissue culture supernatant by affinity chromatography (protein A/G)
Suggested Dilutions	WB 1:500~2000 IHC 1:150 IF 1:100 Flow Cytometry 1:100

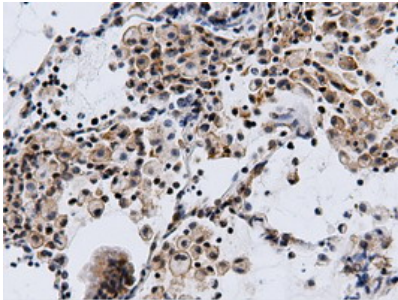
## Anti-CBWD1 Mouse Monoclonal Antibody [Clone ID: OTI3F9] (M15555) Images



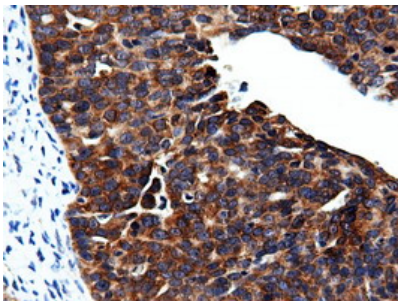
HEK293T cells were transfected with the pCMV6-ENTRY control (Left lane) or pCMV6-ENTRY CBWD1 (Right lane) cDNA for 48 hrs and lysed. Equivalent amounts of cell lysates (5 ug per lane) were separated by SDS-PAGE and immunoblotted with anti-CBWD1.



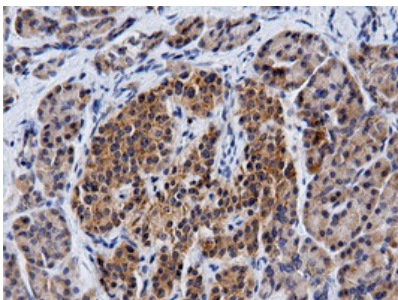
Western blot analysis of extracts (35ug) from 9 different cell lines by using anti-CBWD1 monoclonal antibody.



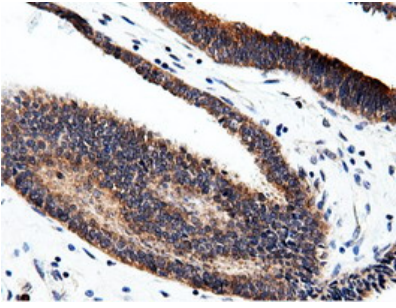
Immunohistochemical staining of paraffin-embedded Carcinoma of Human lung tissue using anti-CBWD1 mouse monoclonal antibody. (Heat-induced epitope retrieval by 10mM citric buffer)



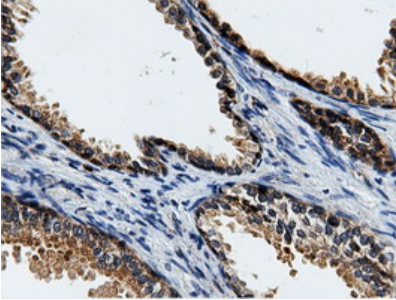
Immunohistochemical staining of paraffin-embedded Adenocarcinoma of Human ovary tissue using anti-CBWD1 mouse monoclonal antibody. (Heat-induced epitope retrieval by 10mM citric buffer)



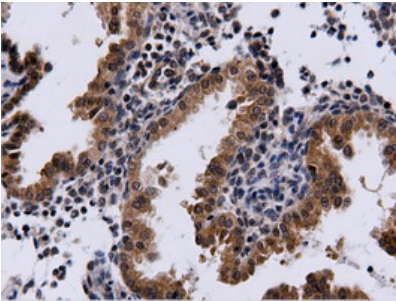
Immunohistochemical staining of paraffin-embedded Human pancreas tissue within the normal limits using anti-CBWD1 mouse monoclonal antibody. (Heat-induced epitope retrieval by 10mM citric buffer)



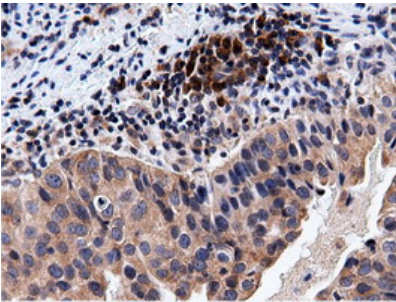
Immunohistochemical staining of paraffin-embedded Adenocarcinoma of Human endometrium tissue using anti-CBWD1 mouse monoclonal antibody. (Heat-induced epitope retrieval by 10mM citric buffer)



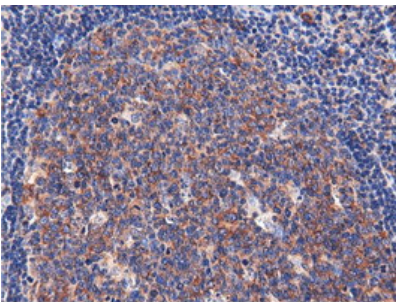
Immunohistochemical staining of paraffin-embedded Human prostate tissue within the normal limits using anti-CBWD1 mouse monoclonal antibody. (Heat-induced epitope retrieval by 10mM citric buffer)



Immunohistochemical staining of paraffin-embedded Carcinoma of Human prostate tissue using anti-CBWD1 mouse monoclonal antibody. (Heat-induced epitope retrieval by 10mM citric buffer)

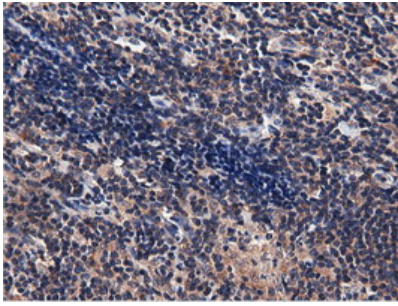


Immunohistochemical staining of paraffin-embedded Carcinoma of Human bladder tissue using anti-CBWD1 mouse monoclonal antibody. (Heat-induced epitope retrieval by 10mM citric buffer)

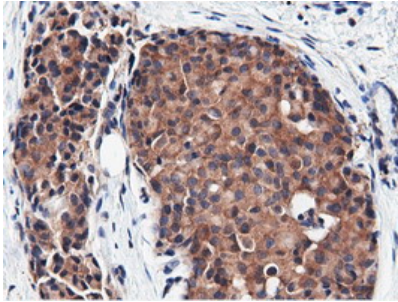


Immunohistochemical staining of paraffin-embedded Human lymph node tissue within the normal limits using anti-CBWD1 mouse monoclonal antibody. (Heat-induced epitope retrieval by 10mM citric buffer)

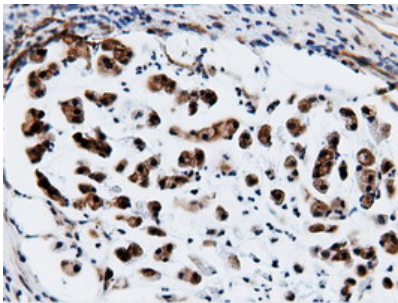
Immunohistochemical staining of paraffin-embedded Human lymphoma tissue using anti-CBWD1 mouse monoclonal antibody. (Heat-induced epitope retrieval by 10mM citric buffer)



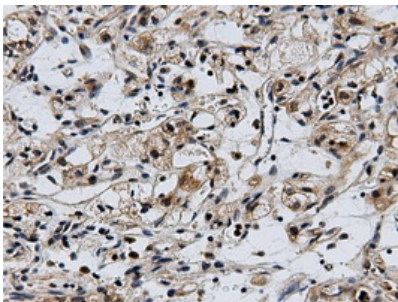
buffer



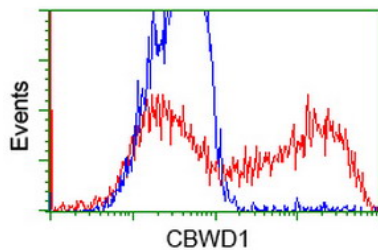
Immunohistochemical staining of paraffin-embedded Adenocarcinoma of Human breast tissue using anti-CBWD1 mouse monoclonal antibody. (Heat-induced epitope retrieval by 10mM citric buffer)



Immunohistochemical staining of paraffin-embedded Adenocarcinoma of Human colon tissue using anti-CBWD1 mouse monoclonal antibody. (Heat-induced epitope retrieval by 10mM citric buffer)

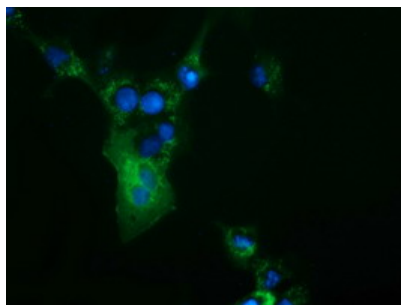
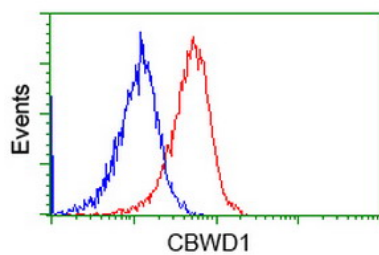


Immunohistochemical staining of paraffin-embedded Carcinoma of Human kidney tissue using anti-CBWD1 mouse monoclonal antibody. (Heat-induced epitope retrieval by 10mM citric buffer)



HEK293T cells transfected with either CBWD1 (Myc-DDK-tagged) overexpress plasmid (Red) or empty vector control plasmid (Blue) were immunostained by anti-CBWD1 antibody (M15555)

Flow cytometric Analysis of Jurkat cells



Anti-CBWD1 mouse monoclonal antibody (M15555) immunofluorescent staining of COS7 cells transiently transfected by pCMV6-ENTRY CBWD1.

## Submit a product review to Biocompare.com

Submit a review of this product to Biocompare.com to receive a \$20 Amazon.com giftcard! Your reviews help your fellow scientists make the right decisions. Thank you for your contribution.



Anti-CBWD1 Mouse Monoclonal Antibody [Clone ID: OT13F9]

For Research Use Only. Not for use in diagnostic procedures.