

## Anti-DEF8 Mouse Monoclonal Antibody [Clone ID: OTI4B6]

Catalog Number: M15742

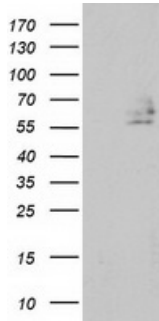
### Overview

Product Name	Anti-DEF8 Mouse Monoclonal Antibody [Clone ID: OTI4B6]
Reactive Species	Human, Mouse, Rat
Description	Boster Bio DEF8 mouse monoclonal antibody, clone OTI4B6 (formerly 4B6). Catalog# M15742. Tested in FC, IF, IHC, WB. This antibody reacts with Human, Mouse, Rat.
Application	Flow Cytometry, IF, IHC, WB
Clonality	Monoclonal OTI4B6
Formulation	PBS (pH 7.3) containing 1% stabilizing protein, 50% glycerol and 0.02% sodium azide. This antibody is supplied in a stabilized formulation. Compatibility with conjugation reactions depends on the chemistry of the conjugation method used. For conjugation methods that are not compatible with the stabilizing components present in this formulation, a carrier-free antibody format is required.
Storage Instructions	Store at -20°C as received.
Host	Mouse
Uniprot ID	Q6ZN54

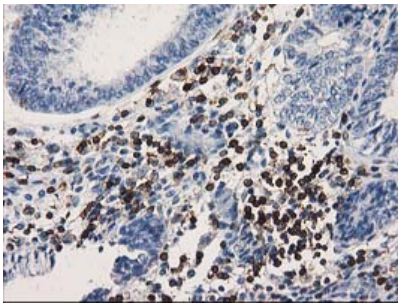
### Technical Details

Immunogen	Full length human recombinant protein of human DEF8 (NP_997397) produced in HEK293T cell.
Isotype	IgG2a
Concentration	0.58 mg/ml
Purification	Purified from mouse ascites fluids or tissue culture supernatant by affinity chromatography (protein A/G)
Suggested Dilutions	WB 1:500 IHC 1:150 IF 1:100 Flow Cytometry 1:100

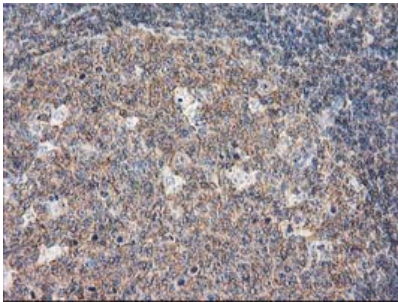
## Anti-DEF8 Mouse Monoclonal Antibody [Clone ID: OTI4B6] (M15742) Images



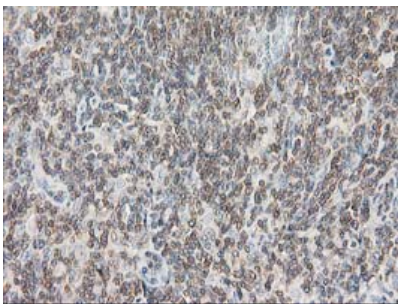
HEK293T cells were transfected with the pCMV6-ENTRY control (Left lane) or pCMV6-ENTRY DEF8 (Right lane) cDNA for 48 hrs and lysed. Equivalent amounts of cell lysates (5 ug per lane) were separated by SDS-PAGE and immunoblotted with anti-DEF8.



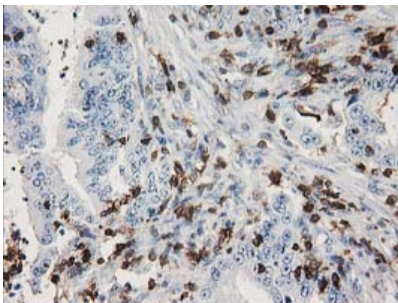
Immunohistochemical staining of paraffin-embedded Adenocarcinoma of Human endometrium tissue using anti-DEF8 mouse monoclonal antibody. (Heat-induced epitope retrieval by 10mM citric buffer)



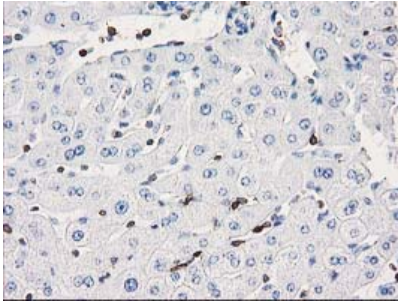
Immunohistochemical staining of paraffin-embedded Human lymph node tissue within the normal limits using anti-DEF8 mouse monoclonal antibody. (Heat-induced epitope retrieval by 10mM citric buffer)



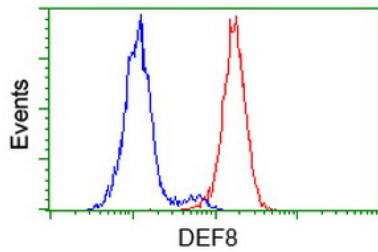
Immunohistochemical staining of paraffin-embedded Human lymphoma tissue using anti-DEF8 mouse monoclonal antibody. (Heat-induced epitope retrieval by 10mM citric buffer)



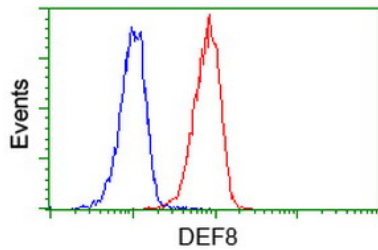
Immunohistochemical staining of paraffin-embedded Adenocarcinoma of Human colon tissue using anti-DEF8 mouse monoclonal antibody. (Heat-induced epitope retrieval by 10mM citric buffer)



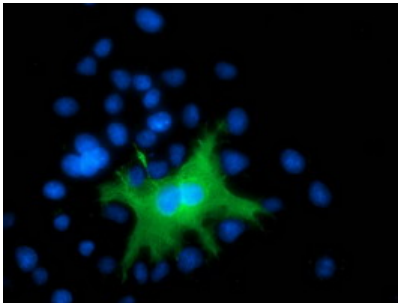
Immunohistochemical staining of paraffin-embedded Human liver tissue within the normal limits using anti-DEF8 mouse monoclonal antibody. (Heat-induced epitope retrieval by 10mM citric buffer)



Flow cytometric Analysis of Hela cells



Flow cytometric Analysis of Jurkat cells



Anti-DEF8 mouse monoclonal antibody (M15742) immunofluorescent staining of COS7 cells transiently transfected by pCMV6-ENTRY DEF8.

## Submit a product review to Biocompare.com

Submit a review of this product to Biocompare.com to receive a \$20 Amazon.com giftcard! Your reviews help your fellow scientists make the right decisions. Thank you for your contribution.



Anti-DEF8 Mouse Monoclonal Antibody [Clone ID: OT14B6]

For Research Use Only. Not for use in diagnostic procedures.