

Anti-EXDL1 (EXD1) Mouse Monoclonal Antibody [Clone ID: OTI2G5]

Catalog Number: M15906

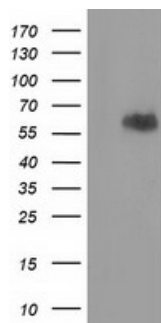
Overview

Product Name	Anti-EXDL1 (EXD1) Mouse Monoclonal Antibody [Clone ID: OTI2G5]
Reactive Species	Human, Monkey, Rat
Description	Boster Bio EXD1 mouse monoclonal antibody, clone OTI2G5 (formerly 2G5). Catalog# M15906. Tested in FC, WB. This antibody reacts with Human, Monkey, Rat.
Application	Flow Cytometry, WB
Clonality	Monoclonal OTI2G5
Formulation	PBS (pH 7.3) containing 1% stabilizing protein, 50% glycerol and 0.02% sodium azide. This antibody is supplied in a stabilized formulation. Compatibility with conjugation reactions depends on the chemistry of the conjugation method used. For conjugation methods that are not compatible with the stabilizing components present in this formulation, a carrier-free antibody format is required.
Storage Instructions	Store at -20°C as received.
Host	Mouse
Uniprot ID	Q8NHP7

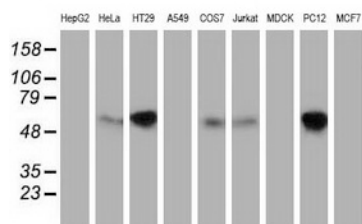
Technical Details

Immunogen	Full length human recombinant protein of human EXD1 (NP_689809) produced in HEK293T cell.
Isotype	IgG1
Concentration	0.6 mg/ml
Purification	Purified from mouse ascites fluids or tissue culture supernatant by affinity chromatography (protein A/G)
Suggested Dilutions	WB 1:200~500 Flow Cytometry 1:100

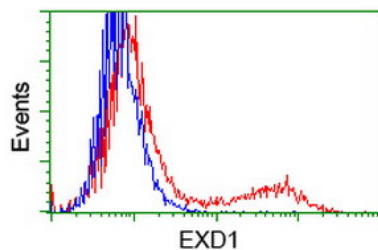
Anti-EXDL1 (EXD1) Mouse Monoclonal Antibody [Clone ID: OTI2G5] (M15906) Images



HEK293T cells were transfected with the pCMV6-ENTRY control (Left lane) or pCMV6-ENTRY EXD1 (Right lane) cDNA for 48 hrs and lysed. Equivalent amounts of cell lysates (5 ug per lane) were separated by SDS-PAGE and immunoblotted with anti-EXD1.



Western blot analysis of extracts (35ug) from 9 different cell lines by using anti-EXD1 monoclonal antibody.



HEK293T cells transfected with either EXD1 (Myc-DDK-tagged) overexpress plasmid (Red) or empty vector control plasmid (Blue) were immunostained by anti-EXD1 antibody (M15906)

Submit a product review to [Biocompare.com](https://www.biocompare.com)

Submit a review of this product to [Biocompare.com](https://www.biocompare.com) to receive a \$20 Amazon.com giftcard! Your reviews help your fellow scientists make the right decisions. Thank you for your contribution.



Anti-EXDL1 (EXD1) Mouse Monoclonal Antibody [Clone ID: OTI2G5]

For Research Use Only. Not for use in diagnostic procedures.