

Anti-CELA2B Antibody (Center)

Catalog Number: M15911

About CELA2B

Acts upon elastin.

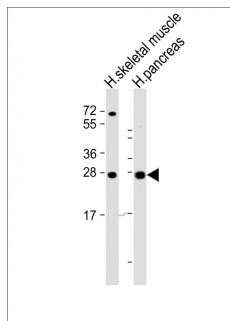
Overview

Product Name	Anti-CELA2B Antibody (Center)
Reactive Species	Human
Description	Boster Bio Anti-CELA2B Antibody (Center) (Catalog # M15911). Tested in WB application(s). This antibody reacts with Human.
Application	WB
Clonality	Polyclonal
Formulation	Purified polyclonal antibody supplied in PBS with 0.09% (W/V) sodium azide.
Storage Instructions	Maintain refrigerated at 2-8°C for up to 2 weeks. For long-term storage, store at -20°C in small aliquots to prevent freeze-thaw cycles.
Host	Rabbit
Uniprot ID	P08218

Technical Details

Immunogen	This CELA2B antibody is generated from a rabbit immunized with a KLH conjugated synthetic peptide between 88-122 amino acids from the Central region of human CELA2B.
Predicted Reactive Species	Xenopus
Isotype	Rabbit IgG
Purification	This antibody is purified through a protein A column, followed by peptide affinity purification.
Suggested Dilutions	WB: 1:2000

Anti-CELA2B Antibody (Center) (M15911) Images



All lanes : Anti-CELA2B Antibody (Center) at 1:2000 dilution
Lane 1: human skeletal muscle lysate
Lane 2: human pancreas lysate
Lysates/proteins at 20 μ g per lane.
Secondary Goat Anti-Rabbit IgG, (H+L), Peroxidase conjugated at 1/10000 dilution. Predicted band size : 29 kDa
Blocking/Dilution buffer: 5% NFDN/TBST.

Submit a product review to Biocompare.com

Submit a review of this product to Biocompare.com to receive a \$20 Amazon.com giftcard! Your reviews help your fellow scientists make the right decisions. Thank you for your contribution.



Anti-CELA2B Antibody (Center)

For Research Use Only. Not for use in diagnostic procedures.