

Anti-Epsilon Tubulin TUBE1 Monoclonal Antibody

Catalog Number: M16034

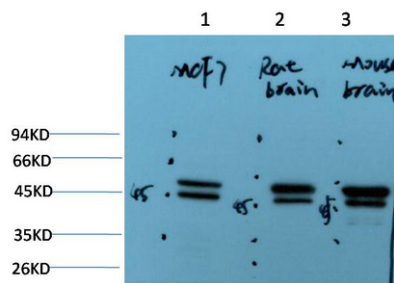
Overview

Product Name	Anti-Epsilon Tubulin TUBE1 Monoclonal Antibody
Reactive Species	Human, Mouse, Rat
Description	Boster Bio Anti-Epsilon Tubulin TUBE1 Monoclonal Antibody catalog # M16034. Tested in WB applications. This antibody reacts with Human, Mouse, Rat.
Application	WB
Clonality	Monoclonal 2B3
Formulation	Liquid in PBS containing 50% glycerol, 0.5% stabilizing protein and 0.02% sodium azide. This antibody is supplied in a stabilized formulation. Compatibility with conjugation reactions depends on the chemistry of the conjugation method used. For conjugation methods that are not compatible with the stabilizing components present in this formulation, a carrier-free antibody format is required.
Storage Instructions	Store at -20°C for one year. For short term storage and frequent use, store at 4°C for up to one month. Avoid repeated freeze-thaw cycles.
Host	Mouse
Uniprot ID	Q9UJT0

Technical Details

Immunogen	Synthetic Peptide of Epsilon Tubulin
Isotype	IgG
Form	Liquid
Concentration	1 mg/ml
Purification	The antibody was affinity-purified from mouse ascites by affinity-chromatography using specific immunogen.
Suggested Dilutions	WB 1:1000-2000

Anti-Epsilon Tubulin TUBE1 Monoclonal Antibody (M16034) Images



Western blot analysis of 1) MCF7 Cell Lysate, 2) Rat Brain Tissue Lysate, 3) Mouse Brain Tissue Lysate using Epsilon Tubulin Mouse mAb diluted at 1:2000.

Submit a product review to Biocompare.com

Submit a review of this product to Biocompare.com to receive a \$20 Amazon.com giftcard! Your reviews help your fellow scientists make the right decisions. Thank you for your contribution.



Anti-Epsilon Tubulin TUBE1 Monoclonal Antibody

For Research Use Only. Not for use in diagnostic procedures.