

## Anti-MAB21L3 Mouse Monoclonal Antibody [Clone ID: OTI2A3]

Catalog Number: M16045

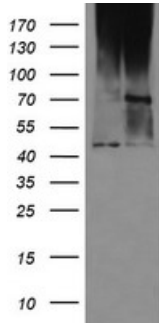
### Overview

Product Name	Anti-MAB21L3 Mouse Monoclonal Antibody [Clone ID: OTI2A3]
Reactive Species	Human
Description	Boster Bio C1orf161 (MAB21L3) mouse monoclonal antibody, clone OTI2A3 (formerly 2A3). Catalog# M16045. Tested in WB. This antibody reacts with Human.
Application	WB
Clonality	Monoclonal OTI2A3
Formulation	PBS (pH 7.3) containing 1% stabilizing protein, 50% glycerol and 0.02% sodium azide. This antibody is supplied in a stabilized formulation. Compatibility with conjugation reactions depends on the chemistry of the conjugation method used. For conjugation methods that are not compatible with the stabilizing components present in this formulation, a carrier-free antibody format is required.
Storage Instructions	Store at -20°C as received.
Host	Mouse
Uniprot ID	Q8N8X9

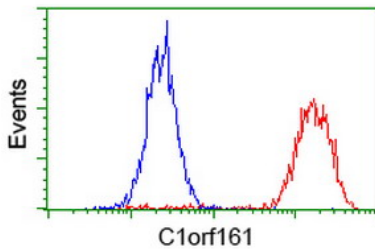
### Technical Details

Immunogen	Full length human recombinant protein of human C1orf161 (NP_689580) produced in HEK293T cell.
Isotype	IgG1
Concentration	0.78 mg/ml
Purification	Purified from mouse ascites fluids or tissue culture supernatant by affinity chromatography (protein A/G)
Suggested Dilutions	WB 1:500 IF 1:100 Flow Cytometry 1:100

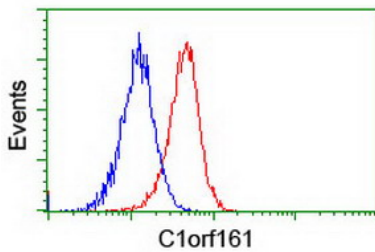
## Anti-MAB21L3 Mouse Monoclonal Antibody [Clone ID: OTI2A3] (M16045) Images



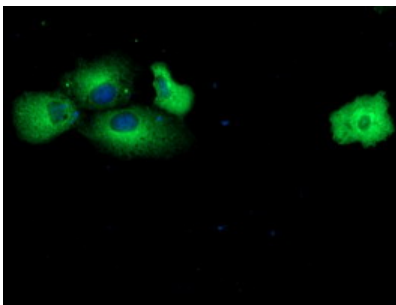
HEK293T cells were transfected with the pCMV6-ENTRY control (Left lane) or pCMV6-ENTRY C1orf161 (Right lane) cDNA for 48 hrs and lysed. Equivalent amounts of cell lysates (5 ug per lane) were separated by SDS-PAGE and immunoblotted with anti-C1orf161.



Flow cytometric Analysis of HeLa cells



Flow cytometric Analysis of Jurkat cells



Anti-C1orf161 mouse monoclonal antibody (M16045) immunofluorescent staining of COS7 cells transiently transfected by pCMV6-ENTRY C1orf161.

**Submit a product review to Biocompare.com**

Submit a review of this product to Biocompare.com to receive a \$20 Amazon.com giftcard! Your reviews help your fellow scientists make the right decisions. Thank you for your contribution.



Anti-MAB21L3 Mouse Monoclonal Antibody [Clone ID: OTI2A3]

For Research Use Only. Not for use in diagnostic procedures.