

Anti-Tumor protein D52 like 3 (TPD52L3) Mouse Monoclonal Antibody [Clone ID: OTI8C12]

Catalog Number: M16435

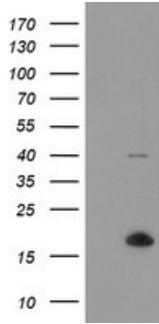
Overview

Product Name	Anti-Tumor protein D52 like 3 (TPD52L3) Mouse Monoclonal Antibody [Clone ID: OTI8C12]
Reactive Species	Human
Description	Boster Bio TPD52L3 (Tumor protein D52 like 3) mouse monoclonal antibody, clone OTI8C12 (formerly 8C12). Catalog# M16435. Tested in FC, IHC, WB. This antibody reacts with Human.
Application	Flow Cytometry, IHC, WB
Clonality	Monoclonal OTI8C12
Formulation	PBS (PH 7.3) containing 1% BSA, 50% glycerol and 0.02% sodium azide.
Storage Instructions	Store at -20°C as received.
Host	Mouse
Uniprot ID	Q96J77

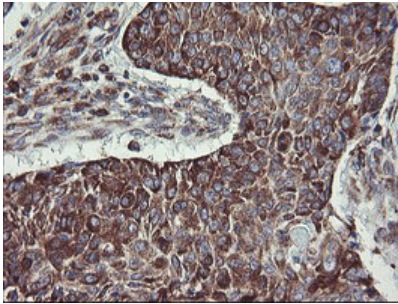
Technical Details

Immunogen	Full length human recombinant protein of human TPD52L3 (NP_001001875) produced in HEK293T cell.
Isotype	IgG1
Concentration	1 mg/ml
Purification	Purified from mouse ascites fluids or tissue culture supernatant by affinity chromatography (protein A/G)
Suggested Dilutions	Dilute the sample so that the expected range of concentrations fall within the detection range of this kit. If the expected range of concentration is unknown, a pilot test should be conducted to decide the optimal dilution ratio for your samples. Some PubMed article(s) citing the expression level of this target are as follows:

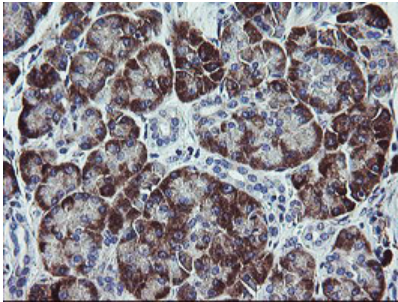
Anti-Tumor protein D52 like 3 (TPD52L3) Mouse Monoclonal Antibody [Clone ID: OTI8C12] (M16435) Images



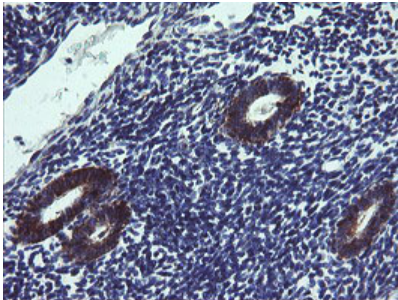
HEK293T cells were transfected with the pCMV6-ENTRY control (Left lane) or pCMV6-ENTRY TPD52L3 (Right lane) cDNA for 48 hrs and lysed. Equivalent amounts of cell lysates (5 ug per lane) were separated by SDS-PAGE and immunoblotted with anti-TPD52L3.



Immunohistochemical staining of paraffin-embedded Carcinoma of Human lung tissue using anti-TPD52L3 mouse monoclonal antibody. (Heat-induced epitope retrieval by 10mM citric buffer)

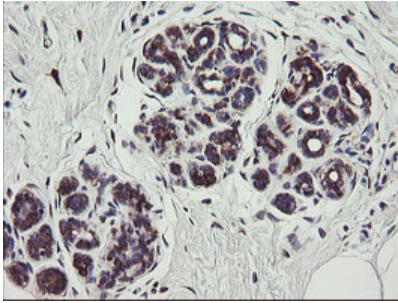
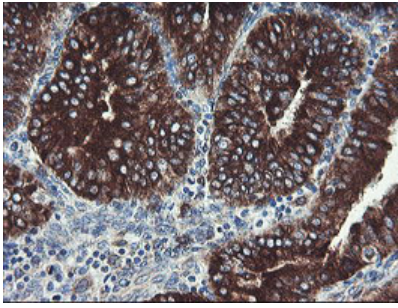


Immunohistochemical staining of paraffin-embedded Human pancreas tissue within the normal limits using anti-TPD52L3 mouse monoclonal antibody. (Heat-induced epitope retrieval by 10mM citric buffer)

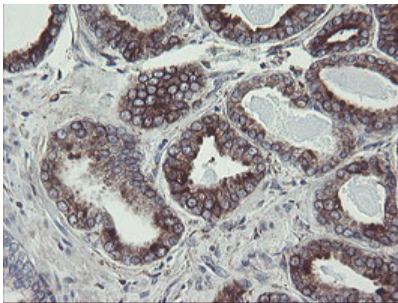


Immunohistochemical staining of paraffin-embedded Human endometrium tissue within the normal limits using anti-TPD52L3 mouse monoclonal antibody. (Heat-induced epitope retrieval by 10mM citric buffer)

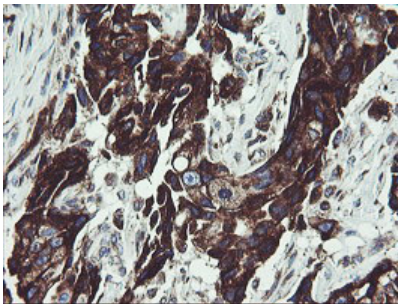
Immunohistochemical staining of paraffin-embedded Adenocarcinoma of Human endometrium tissue using anti-TPD52L3 mouse monoclonal antibody. (Heat-induced epitope retrieval by 10mM citric buffer)



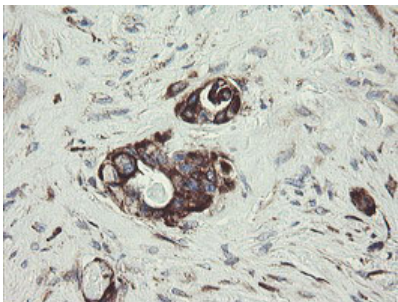
Immunohistochemical staining of paraffin-embedded Human breast tissue within the normal limits using anti-TPD52L3 mouse monoclonal antibody. (Heat-induced epitope retrieval by 10mM citric buffer)



Immunohistochemical staining of paraffin-embedded Carcinoma of Human prostate tissue using anti-TPD52L3 mouse monoclonal antibody. (Heat-induced epitope retrieval by 10mM citric buffer)

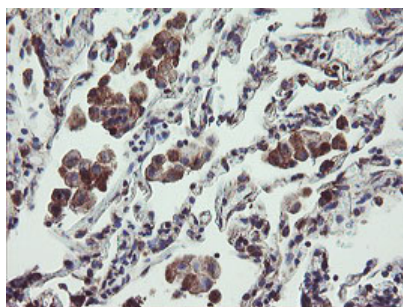


Immunohistochemical staining of paraffin-embedded Adenocarcinoma of Human breast tissue using anti-TPD52L3 mouse monoclonal antibody. (Heat-induced epitope retrieval by 10mM citric buffer)

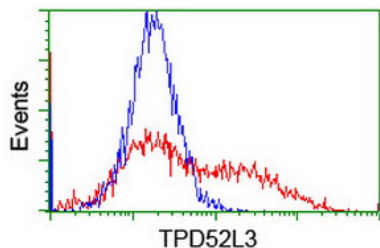


Immunohistochemical staining of paraffin-embedded Adenocarcinoma of Human colon tissue using anti-TPD52L3 mouse monoclonal antibody. (Heat-induced epitope retrieval by 10mM citric buffer)

Immunohistochemical staining of paraffin-embedded Human lung tissue within the normal limits using anti-TPD52L3



mouse monoclonal antibody. (Heat-induced epitope retrieval by 10mM citric buffer)



HEK293T cells transfected with either TPD52L3 (Myc-DDK-tagged) overexpress plasmid (Red) or empty vector control plasmid (Blue) were immunostained by anti-TPD52L3 antibody (M16435)

Submit a product review to Biocompare.com

Submit a review of this product to Biocompare.com to receive a \$20 Amazon.com giftcard! Your reviews help your fellow scientists make the right decisions. Thank you for your contribution.



Anti-Tumor protein D52 like 3 (TPD52L3) Mouse Monoclonal Antibody [Clone ID: OTI8C12]