

Anti-THAP6 Mouse Monoclonal Antibody [Clone ID: OTI1E10]

Catalog Number: M16470-1

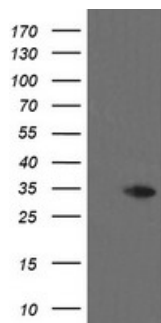
Overview

Product Name	Anti-THAP6 Mouse Monoclonal Antibody [Clone ID: OTI1E10]
Reactive Species	Human, Rat
Description	Boster Bio THAP6 mouse monoclonal antibody, clone OTI1E10 (formerly 1E10). Catalog# M16470-1. Tested in IF, WB. This antibody reacts with Human, Rat.
Application	IF, WB
Clonality	Monoclonal OTI1E10
Formulation	PBS (pH 7.3) containing 1% stabilizing protein, 50% glycerol and 0.02% sodium azide. This antibody is supplied in a stabilized formulation. Compatibility with conjugation reactions depends on the chemistry of the conjugation method used. For conjugation methods that are not compatible with the stabilizing components present in this formulation, a carrier-free antibody format is required.
Storage Instructions	Store at -20°C as received.
Host	Mouse
Uniprot ID	Q8TBB0

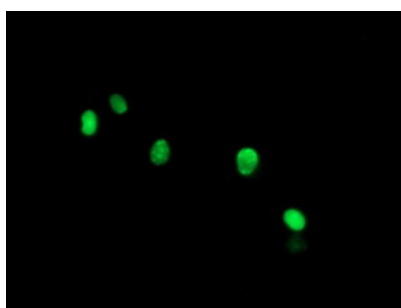
Technical Details

Immunogen	Full length human recombinant protein of human THAP6 (NP_653322) produced in E.coli.
Isotype	IgG1
Concentration	1 mg/ml
Purification	Purified from mouse ascites fluids or tissue culture supernatant by affinity chromatography (protein A/G)
Suggested Dilutions	WB 1:2000 IF 1:100

Anti-THAP6 Mouse Monoclonal Antibody [Clone ID: OTI1E10] (M16470-1) Images



HEK293T cells were transfected with the pCMV6-ENTRY control (Left lane) or pCMV6-ENTRY THAP6 (Right lane) cDNA for 48 hrs and lysed. Equivalent amounts of cell lysates (5 ug per lane) were separated by SDS-PAGE and immunoblotted with anti-THAP6.



Anti-THAP6 mouse monoclonal antibody (M16470-1) immunofluorescent staining of COS7 cells transiently transfected by pCMV6-ENTRY THAP6.

Submit a product review to Biocompare.com

Submit a review of this product to Biocompare.com to receive a \$20 Amazon.com giftcard! Your reviews help your fellow scientists make the right decisions. Thank you for your contribution.



Anti-THAP6 Mouse Monoclonal Antibody [Clone ID: OTI1E10]

For Research Use Only. Not for use in diagnostic procedures.