

## Anti-EEF1A1P5 Antibody (C-Term)

Catalog Number: M16505

### About EEF1A1P5

This protein promotes the GTP-dependent binding of aminoacyl-tRNA to the A-site of ribosomes during protein biosynthesis.

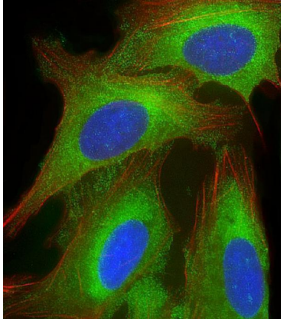
### Overview

Product Name	Anti-EEF1A1P5 Antibody (C-Term)
Reactive Species	Human
Description	Boster Bio Anti-EEF1A1P5 Antibody (C-Term) (Catalog # M16505). Tested in WB, Flow Cytometry, IF application(s). This antibody reacts with Human.
Application	Flow Cytometry, IF, WB
Clonality	Polyclonal
Formulation	Purified polyclonal antibody supplied in PBS with 0.09% (W/V) sodium azide.
Storage Instructions	Maintain refrigerated at 2-8°C for up to 2 weeks. For long-term storage, store at -20°C in small aliquots to prevent freeze-thaw cycles.
Host	Rabbit
Uniprot ID	Q5VTE0

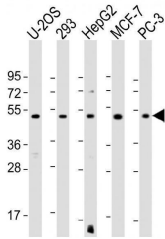
### Technical Details

Immunogen	This EEF1A1P5 antibody is generated from a rabbit immunized with a KLH conjugated synthetic peptide between 430-462 amino acids from human EEF1A1P5.
Predicted Reactive Species	Bovine, Chicken, Hamster, Horse, Mouse, Rabbit, Rat
Isotype	Rabbit IgG
Purification	This antibody is purified through a protein A column, followed by peptide affinity purification.
Suggested Dilutions	IF: 1:25 WB: 1:1000-1:2000 FC: 1:25

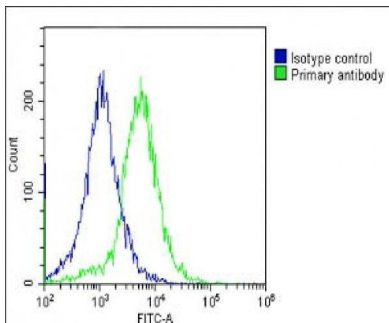
## Anti-EEF1A1P5 Antibody (C-Term) (M16505) Images



Immunofluorescent analysis of 4% paraformaldehyde-fixed, 0.1% Triton X-100 permeabilized U-2 OS (human osteosarcoma cell line) cells labeling EEF1A1P5 with M16505 at 1/25 dilution, followed by Dylight® 488-conjugated goat anti-rabbit IgG secondary antibody at 1/200 dilution (green). Immunofluorescence image showing cytoplasm staining on U-2 OS cell line. Cytoplasmic actin is detected with Dylight® 554 Phalloidin at 1/100 dilution (red). The nuclear counter stain is DAPI (blue).



All lanes : Anti-EEF1A1P5 Antibody (C-Term) at 1:1000-1:2000 dilution  
Lane 1: U-2OS whole cell lysate  
Lane 2: 293 whole cell lysate  
Lane 3: HepG2 whole cell lysate  
Lane 4: MCF-7 whole cell lysate  
Lane 5: PC-3 whole cell lysate  
Lysates/proteins at 20 µg per lane. Secondary Goat Anti-Rabbit IgG, (H+L), Peroxidase conjugated at 1/10000 dilution. Predicted band size : 50 kDa  
Blocking/Dilution buffer: 5% NFDN/TBST.



Overlay histogram showing HepG2 cells stained with M16505 (green line). The cells were fixed with 2% paraformaldehyde (10 min) and then permeabilized with 90% methanol for 10 min. The cells were then incubated in 2% bovine serum albumin to block non-specific protein-protein interactions followed by the antibody (M16505, 1:25 dilution) for 60 min at 37°C. The secondary antibody used was Goat-Anti-Rabbit IgG, DyLight® 488 Conjugated Highly Cross-Adsorbed at 1/200 dilution for 40 min at 37°C. Isotype control antibody (blue line) was rabbit IgG1 (1g/1x10<sup>6</sup> cells) used under the same conditions. Acquisition of >10,000 events was performed..

### Submit a product review to Biocompare.com

Submit a review of this product to Biocompare.com to receive a \$20 Amazon.com giftcard! Your reviews help your fellow scientists make the right decisions. Thank you for your contribution.



### Anti-EEF1A1P5 Antibody (C-Term)

For Research Use Only. Not for use in diagnostic procedures.