

Anti-PCDHGC5 Mouse Monoclonal Antibody [Clone ID: OTI2E1]

Catalog Number: M16740

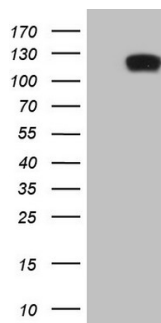
Overview

Product Name	Anti-PCDHGC5 Mouse Monoclonal Antibody [Clone ID: OTI2E1]
Reactive Species	Human, Mouse, Rat
Description	Boster Bio PCDHGC5 mouse monoclonal antibody, clone OTI2E1 (formerly 2E1). Catalog# M16740. Tested in IHC, WB. This antibody reacts with Human, Mouse, Rat.
Application	IHC, WB
Clonality	Monoclonal OTI2E1
Formulation	PBS (pH 7.3) containing 1% stabilizing protein, 50% glycerol and 0.02% sodium azide. This antibody is supplied in a stabilized formulation. Compatibility with conjugation reactions depends on the chemistry of the conjugation method used. For conjugation methods that are not compatible with the stabilizing components present in this formulation, a carrier-free antibody format is required.
Storage Instructions	Store at -20°C as received.
Host	Mouse
Uniprot ID	Q9Y5F6

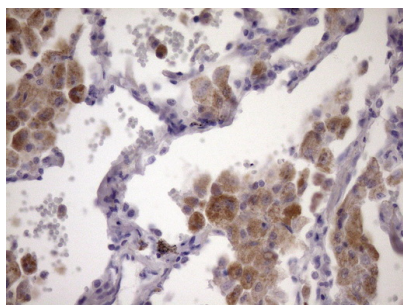
Technical Details

Immunogen	Human recombinant protein fragment corresponding to amino acids 35-258 of human PCDHGC5 (NP_115783) produced in E.coli.
Isotype	IgG1
Concentration	1 mg/ml
Purification	Purified from mouse ascites fluids or tissue culture supernatant by affinity chromatography (protein A/G)
Suggested Dilutions	WB 1:2000 IHC 1:150

Anti-PCDHGC5 Mouse Monoclonal Antibody [Clone ID: OTI2E1] (M16740) Images



HEK293T cells were transfected with the pCMV6-ENTRY control (Left lane) or pCMV6-ENTRY PCDHGC5 (Right lane) cDNA for 48 hrs and lysed. Equivalent amounts of cell lysates (5 ug per lane) were separated by SDS-PAGE and immunoblotted with anti-PCDHGC5 (1:2000).



Immunohistochemical staining of paraffin-embedded Carcinoma of Human lung tissue using anti-PCDHGC5 mouse monoclonal antibody. (Heat-induced epitope retrieval by Tris-EDTA)

Submit a product review to Biocompare.com

Submit a review of this product to Biocompare.com to receive a \$20 Amazon.com giftcard! Your reviews help your fellow scientists make the right decisions. Thank you for your contribution.



Anti-PCDHGC5 Mouse Monoclonal Antibody [Clone ID: OTI2E1]

For Research Use Only. Not for use in diagnostic procedures.