

Anti-MDS028 (ITFG2) Mouse Monoclonal Antibody [Clone ID: OTI 3B3]

Catalog Number: M17225

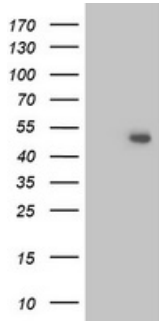
Overview

Product Name	Anti-MDS028 (ITFG2) Mouse Monoclonal Antibody [Clone ID: OTI 3B3]
Reactive Species	Human, Mouse, Rat
Description	Boster Bio ITFG2 (MDS028) mouse monoclonal antibody, clone OTI 3B3 (formerly 3B3). Catalog# M17225. Tested in FC, IF, WB. This antibody reacts with Human, Mouse, Rat.
Application	Flow Cytometry, IF, WB
Clonality	Monoclonal OTI 3B3
Formulation	PBS (pH 7.3) containing 1% stabilizing protein, 50% glycerol and 0.02% sodium azide. This antibody is supplied in a stabilized formulation. Compatibility with conjugation reactions depends on the chemistry of the conjugation method used. For conjugation methods that are not compatible with the stabilizing components present in this formulation, a carrier-free antibody format is required.
Storage Instructions	Store at -20°C as received.
Host	Mouse
Uniprot ID	Q969R8

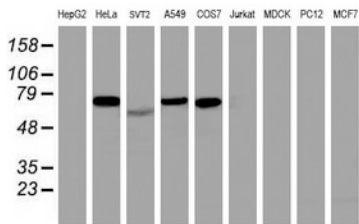
Technical Details

Immunogen	Full length human recombinant protein of human ITFG2 (NP_060933) produced in HEK293T cell.
Isotype	IgG1
Concentration	0.33 mg/ml
Purification	Purified from mouse ascites fluids or tissue culture supernatant by affinity chromatography (protein A/G)
Suggested Dilutions	WB 1:2000 IF 1:100 Flow Cytometry 1:100

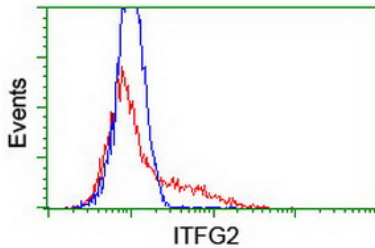
Anti-MDS028 (ITFG2) Mouse Monoclonal Antibody [Clone ID: OTI 3B3] (M17225) Images



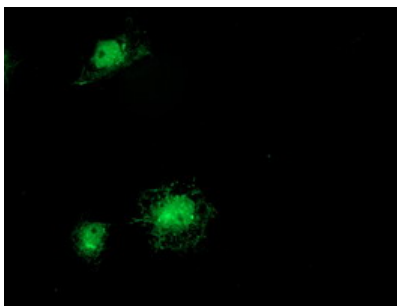
HEK293T cells were transfected with the pCMV6-ENTRY control (Left lane) or pCMV6-ENTRY ITFG2 (Right lane) cDNA for 48 hrs and lysed. Equivalent amounts of cell lysates (5 ug per lane) were separated by SDS-PAGE and immunoblotted with anti-ITFG2.



Western blot analysis of extracts (35ug) from 9 different cell lines by using anti-ITFG2 monoclonal antibody (HepG2: human; HeLa: human; SVT2: mouse; A549: human; COS7: monkey; Jurkat: human; MDCK: canine; PC12: rat; MCF7: human).



HEK293T cells transfected with either ITFG2 (Myc-DDK-tagged) overexpress plasmid (Red) or empty vector control plasmid (Blue) were immunostained by anti-ITFG2 antibody (M17225)



Anti-ITFG2 mouse monoclonal antibody (M17225) immunofluorescent staining of COS7 cells transiently transfected by pCMV6-ENTRY ITFG2.

Submit a product review to [Biocompare.com](https://www.biocompare.com)

Submit a review of this product to [Biocompare.com](https://www.biocompare.com) to receive a \$20 Amazon.com giftcard! Your reviews help your fellow scientists make the right decisions. Thank you for your contribution.



Anti-MDS028 (ITFG2) Mouse Monoclonal Antibody [Clone ID: OTI 3B3]

For Research Use Only. Not for use in diagnostic procedures.