

Anti-MDS028 (ITFG2) Mouse Monoclonal Antibody [Clone ID: OTI3A3]

Catalog Number: M17225-2

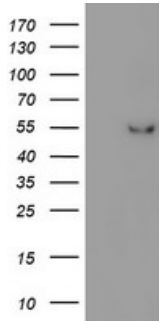
Overview

Product Name	Anti-MDS028 (ITFG2) Mouse Monoclonal Antibody [Clone ID: OTI3A3]
Reactive Species	Human, Monkey, Mouse, Rat
Description	Boster Bio ITFG2 (MDS028) mouse monoclonal antibody, clone OTI3A3 (formerly 3A3). Catalog# M17225-2. Tested in IHC, WB. This antibody reacts with Human, Monkey, Mouse, Rat.
Application	IHC, WB
Clonality	Monoclonal OTI3A3
Formulation	PBS (pH 7.3) containing 1% stabilizing protein, 50% glycerol and 0.02% sodium azide. This antibody is supplied in a stabilized formulation. Compatibility with conjugation reactions depends on the chemistry of the conjugation method used. For conjugation methods that are not compatible with the stabilizing components present in this formulation, a carrier-free antibody format is required.
Storage Instructions	Store at -20°C as received.
Host	Mouse
Uniprot ID	Q969R8

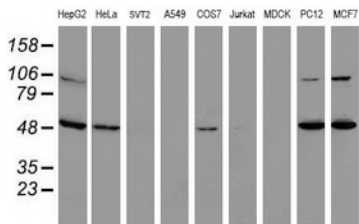
Technical Details

Immunogen	Full length human recombinant protein of human ITFG2 (NP_060933) produced in HEK293T cell.
Isotype	IgG1
Concentration	0.84 mg/ml
Purification	Purified from mouse ascites fluids or tissue culture supernatant by affinity chromatography (protein A/G)
Suggested Dilutions	WB 1:500~2000 IHC 1:150

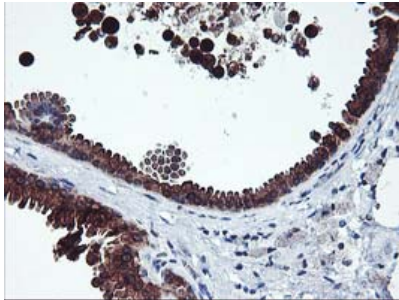
Anti-MDS028 (ITFG2) Mouse Monoclonal Antibody [Clone ID: OTI3A3] (M17225-2) Images



HEK293T cells were transfected with the pCMV6-ENTRY control (Left lane) or pCMV6-ENTRY ITFG2 (Right lane) cDNA for 48 hrs and lysed. Equivalent amounts of cell lysates (5 ug per lane) were separated by SDS-PAGE and immunoblotted with anti-ITFG2.



Western blot analysis of extracts (35ug) from 9 different cell lines by using anti-ITFG2 monoclonal antibody.



Immunohistochemical staining of paraffin-embedded Human breast tissue within the normal limits using anti-ITFG2 mouse monoclonal antibody. (Heat-induced epitope retrieval by 10mM citric buffer)

Submit a product review to [Biocompare.com](https://www.biocompare.com)

Submit a review of this product to [Biocompare.com](https://www.biocompare.com) to receive a \$20 Amazon.com giftcard! Your reviews help your fellow scientists make the right decisions. Thank you for your contribution.



Anti-MDS028 (ITFG2) Mouse Monoclonal Antibody [Clone ID: OTI3A3]

For Research Use Only. Not for use in diagnostic procedures.