

Anti-TCP11L2 Mouse Monoclonal Antibody [Clone ID: OTI2A10]

Catalog Number: M18041

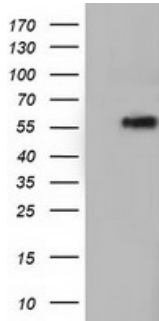
Overview

Product Name	Anti-TCP11L2 Mouse Monoclonal Antibody [Clone ID: OTI2A10]
Reactive Species	Human
Description	Boster Bio TCP11L2 mouse monoclonal antibody, clone OTI2A10 (formerly 2A10). Catalog# M18041. Tested in FC, IF, WB. This antibody reacts with Human.
Application	Flow Cytometry, IF, WB
Clonality	Monoclonal OTI2A10
Formulation	PBS (pH 7.3) containing 1% stabilizing protein, 50% glycerol and 0.02% sodium azide. This antibody is supplied in a stabilized formulation. Compatibility with conjugation reactions depends on the chemistry of the conjugation method used. For conjugation methods that are not compatible with the stabilizing components present in this formulation, a carrier-free antibody format is required.
Storage Instructions	Store at -20°C as received.
Host	Mouse
Uniprot ID	Q8N4U5

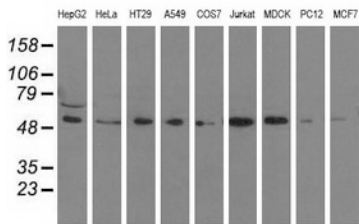
Technical Details

Immunogen	Full length human recombinant protein of human TCP11L2 (NP_689985) produced in HEK293T cell.
Isotype	IgG1
Concentration	0.77 mg/ml
Purification	Purified from mouse ascites fluids or tissue culture supernatant by affinity chromatography (protein A/G)
Suggested Dilutions	WB 1:500~2000 IF 1:100 Flow Cytometry 1:100

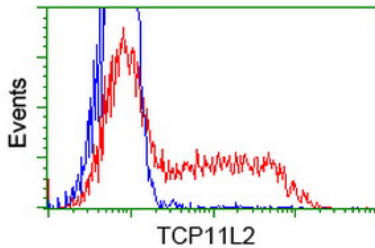
Anti-TCP11L2 Mouse Monoclonal Antibody [Clone ID: OTI2A10] (M18041) Images



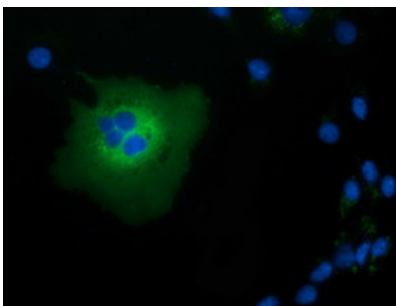
HEK293T cells were transfected with the pCMV6-ENTRY control (Left lane) or pCMV6-ENTRY TCP11L2 (Right lane) cDNA for 48 hrs and lysed. Equivalent amounts of cell lysates (5 ug per lane) were separated by SDS-PAGE and immunoblotted with anti-TCP11L2.



Western blot analysis of extracts (35ug) from 9 different cell lines by using anti-TCP11L2 monoclonal antibody.



HEK293T cells transfected with either TCP11L2 (Myc-DDK-tagged) overexpress plasmid (Red) or empty vector control plasmid (Blue) were immunostained by anti-TCP11L2 antibody (M18041)



Anti-TCP11L2 mouse monoclonal antibody (M18041) immunofluorescent staining of COS7 cells transiently transfected by pCMV6-ENTRY TCP11L2.

Submit a product review to [Biocompare.com](https://www.biocompare.com)

Submit a review of this product to [Biocompare.com](https://www.biocompare.com) to receive a \$20 Amazon.com giftcard! Your reviews help your fellow scientists make the right decisions. Thank you for your contribution.



Anti-TCP11L2 Mouse Monoclonal Antibody [Clone ID: OTI2A10]

For Research Use Only. Not for use in diagnostic procedures.