

## Anti-FAM151B Mouse Monoclonal Antibody [Clone ID: OTI1F5]

Catalog Number: M18166

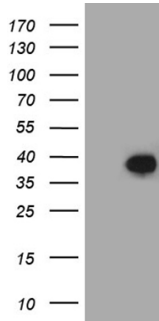
### Overview

Product Name	Anti-FAM151B Mouse Monoclonal Antibody [Clone ID: OTI1F5]
Reactive Species	Human, Mouse
Description	Boster Bio FAM151B mouse monoclonal antibody, clone OTI1F5. Catalog# M18166. Tested in IHC, WB. This antibody reacts with Human, Mouse.
Application	IHC, WB
Clonality	Monoclonal OTI1F5
Formulation	PBS (pH 7.3) containing 1% stabilizing protein, 50% glycerol and 0.02% sodium azide. This antibody is supplied in a stabilized formulation. Compatibility with conjugation reactions depends on the chemistry of the conjugation method used. For conjugation methods that are not compatible with the stabilizing components present in this formulation, a carrier-free antibody format is required.
Storage Instructions	Store at -20°C as received.
Host	Mouse
Uniprot ID	Q6UXP7

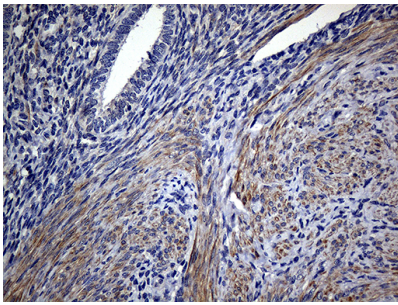
### Technical Details

Immunogen	Full length human recombinant protein of human FAM151B (NP_991111) produced in HEK293T cell.
Isotype	IgG2a
Concentration	1 mg/ml
Purification	Purified from mouse ascites fluids or tissue culture supernatant by affinity chromatography (protein A/G)
Suggested Dilutions	WB 1:2000 IHC 1:500

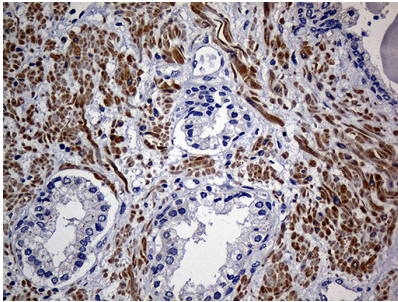
## Anti-FAM151B Mouse Monoclonal Antibody [Clone ID: OTI1F5] (M18166) Images



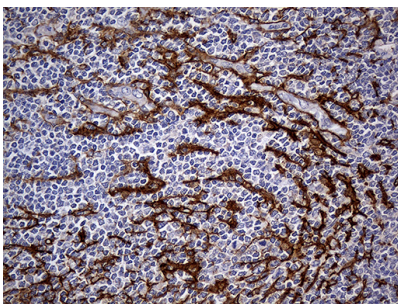
HEK293T cells were transfected with the pCMV6-ENTRY control (Left lane) or pCMV6-ENTRY FAM151B (Right lane) cDNA for 48 hrs and lysed. Equivalent amounts of cell lysates (5 ug per lane) were separated by SDS-PAGE and immunoblotted with anti-FAM151B (1:2000).



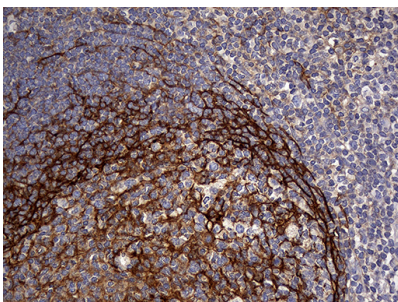
Immunohistochemical staining of paraffin-embedded Human endometrium tissue within the normal limits using anti-FAM151B mouse monoclonal antibody. (Heat-induced epitope retrieval by 1mM EDTA in 10mM Tris buffer (pH8.5) at 120°C for 3min)



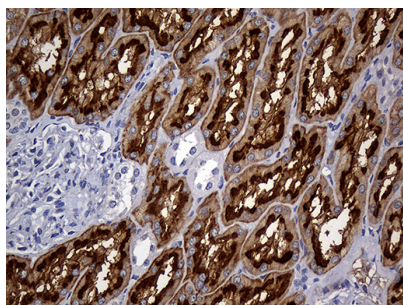
Immunohistochemical staining of paraffin-embedded Human prostate tissue within the normal limits using anti-FAM151B mouse monoclonal antibody. (Heat-induced epitope retrieval by 1mM EDTA in 10mM Tris buffer (pH8.5) at 120°C for 3min)



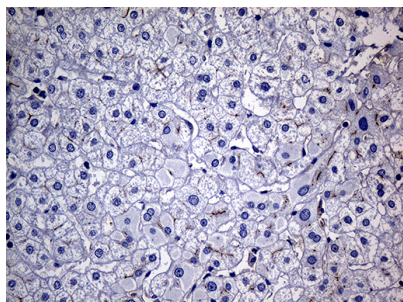
Immunohistochemical staining of paraffin-embedded Human lymphoma tissue using anti-FAM151B mouse monoclonal antibody. (Heat-induced epitope retrieval by 1mM EDTA in 10mM Tris buffer (pH8.5) at 120°C for 3min)



Immunohistochemical staining of paraffin-embedded Human tonsil within the normal limits using anti-FAM151B mouse monoclonal antibody. (Heat-induced epitope retrieval by 1mM EDTA in 10mM Tris buffer (pH8.5) at 120°C for 3min)



Immunohistochemical staining of paraffin-embedded Human Kidney tissue within the normal limits using anti-FAM151B mouse monoclonal antibody. (Heat-induced epitope retrieval by 1mM EDTA in 10mM Tris buffer (pH8.5) at 120Å°C for 3min)



Immunohistochemical staining of paraffin-embedded Human liver tissue within the normal limits using anti-FAM151B mouse monoclonal antibody. (Heat-induced epitope retrieval by 1mM EDTA in 10mM Tris buffer (pH8.5) at 120Å°C for 3min)

## Submit a product review to Biocompare.com

Submit a review of this product to Biocompare.com to receive a \$20 Amazon.com giftcard! Your reviews help your fellow scientists make the right decisions. Thank you for your contribution.



Anti-FAM151B Mouse Monoclonal Antibody [Clone ID: OT11F5]

For Research Use Only. Not for use in diagnostic procedures.