

## Anti-C3orf25 (EFCAB12) Mouse Monoclonal Antibody [Clone ID: OTI1A3]

Catalog Number: M18400

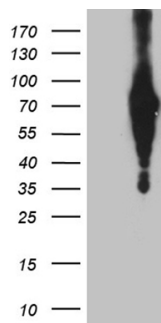
### Overview

Product Name	Anti-C3orf25 (EFCAB12) Mouse Monoclonal Antibody [Clone ID: OTI1A3]
Reactive Species	Human
Description	Boster Bio C3orf25 mouse monoclonal antibody, clone OTI1A3. Catalog# M18400. Tested in WB. This antibody reacts with Human.
Application	WB
Clonality	Monoclonal OTI1A3
Formulation	PBS (pH 7.3) containing 1% stabilizing protein, 50% glycerol and 0.02% sodium azide. This antibody is supplied in a stabilized formulation. Compatibility with conjugation reactions depends on the chemistry of the conjugation method used. For conjugation methods that are not compatible with the stabilizing components present in this formulation, a carrier-free antibody format is required.
Storage Instructions	Store at -20°C as received.
Host	Mouse
Uniprot ID	Q6NXP0

### Technical Details

Immunogen	Full length human recombinant protein of human C3orf25 (NP_997190) produced in E.coli.
Isotype	IgG1
Concentration	1 mg/ml
Purification	Purified from mouse ascites fluids or tissue culture supernatant by affinity chromatography (protein A/G)
Suggested Dilutions	WB 1:2000

## Anti-C3orf25 (EFCAB12) Mouse Monoclonal Antibody [Clone ID: OTI1A3] (M18400) Images



HEK293T cells were transfected with the pCMV6-ENTRY control (Left lane) or pCMV6-ENTRY C3orf25 (Right lane) cDNA for 48 hrs and lysed. Equivalent amounts of cell lysates (5 ug per lane) were separated by SDS-PAGE and immunoblotted with anti-C3or.

### Submit a product review to Biocompare.com

Submit a review of this product to Biocompare.com to receive a \$20 Amazon.com giftcard! Your reviews help your fellow scientists make the right decisions. Thank you for your contribution.



Anti-C3orf25 (EFCAB12) Mouse Monoclonal Antibody [Clone ID: OTI1A3]

For Research Use Only. Not for use in diagnostic procedures.