

Anti-SEN1 (MORF4) Mouse Monoclonal Antibody [Clone ID: OTI5F2]

Catalog Number: M30172

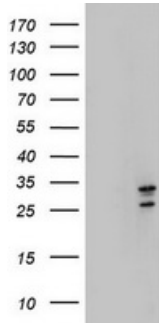
Overview

Product Name	Anti-SEN1 (MORF4) Mouse Monoclonal Antibody [Clone ID: OTI5F2]
Reactive Species	Dog, Human, Monkey, Mouse, Rat
Description	Boster Bio MORF4 (SEN1) mouse monoclonal antibody, clone OTI5F2 (formerly 5F2). Catalog# M30172. Tested in IHC, WB. This antibody reacts with Human, Monkey, Mouse, Rat, Dog.
Application	IHC, WB
Clonality	Monoclonal OTI5F2
Formulation	PBS (pH 7.3) containing 1% stabilizing protein, 50% glycerol and 0.02% sodium azide. This antibody is supplied in a stabilized formulation. Compatibility with conjugation reactions depends on the chemistry of the conjugation method used. For conjugation methods that are not compatible with the stabilizing components present in this formulation, a carrier-free antibody format is required.
Storage Instructions	Store at -20°C as received.
Host	Mouse

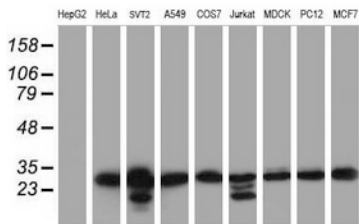
Technical Details

Immunogen	Human recombinant protein fragment corresponding to amino acids 1-255 of human MORF4 (NP_006783) produced in E.coli.
Isotype	IgG1
Concentration	1 mg/ml
Purification	Purified from mouse ascites fluids or tissue culture supernatant by affinity chromatography (protein A/G)
Suggested Dilutions	WB 1:2000 IHC 1:150

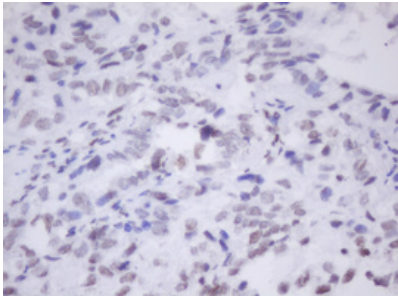
Anti-SEN1 (MORF4) Mouse Monoclonal Antibody [Clone ID: OTI5F2] (M30172) Images



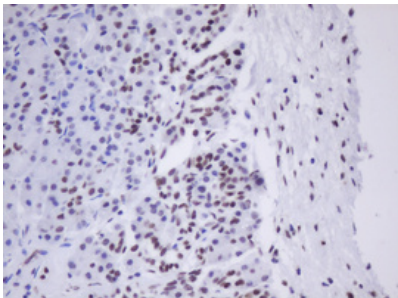
HEK293T cells were transfected with the pCMV6-ENTRY control (Left lane) or pCMV6-ENTRY MORF4 (Right lane) cDNA for 48 hrs and lysed. Equivalent amounts of cell lysates (5 ug per lane) were separated by SDS-PAGE and immunoblotted with anti-MORF4.



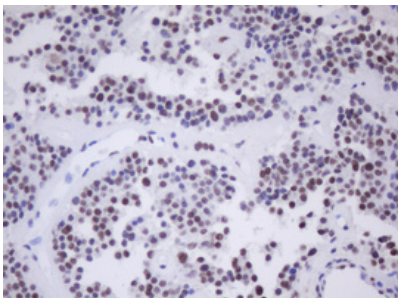
Western blot analysis of extracts (35ug) from 9 different cell lines by using anti-MORF4 monoclonal antibody (HepG2: human; HeLa: human; SVT2: mouse; A549: human; COS7: monkey; Jurkat: human; MDCK: canine; PC12: rat; MCF7: human).



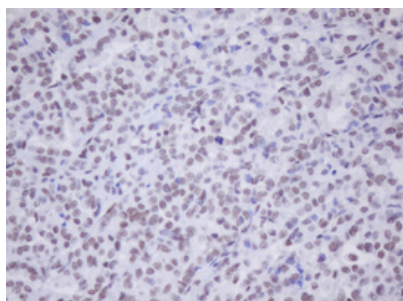
Immunohistochemical staining of paraffin-embedded Adenocarcinoma of Human ovary tissue using anti-MORF4 mouse monoclonal antibody. (Heat-induced epitope retrieval by 10mM citric buffer)



Immunohistochemical staining of paraffin-embedded Human pancreas tissue within the normal limits using anti-MORF4 mouse monoclonal antibody. (Heat-induced epitope retrieval by 10mM citric buffer)



Immunohistochemical staining of paraffin-embedded Carcinoma of Human pancreas tissue using anti-MORF4 mouse monoclonal antibody. (Heat-induced epitope retrieval by 10mM citric buffer)



Immunohistochemical staining of paraffin-embedded Carcinoma of Human thyroid tissue using anti-MORF4 mouse monoclonal antibody. (Heat-induced epitope retrieval by 10mM citric buffer)

Submit a product review to Biocompare.com

Submit a review of this product to Biocompare.com to receive a \$20 Amazon.com giftcard! Your reviews help your fellow scientists make the right decisions. Thank you for your contribution.



Anti-SEN1 (MORF4) Mouse Monoclonal Antibody [Clone ID: OT15F2]

For Research Use Only. Not for use in diagnostic procedures.