

Anti-Siglec-H Antibody (Monoclonal, ABM2B55)

Catalog Number: M30285

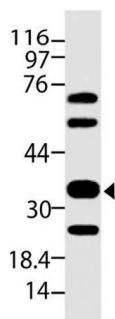
Overview

Product Name	Anti-Siglec-H Antibody (Monoclonal, ABM2B55)
Reactive Species	Mouse
Description	Boster Bio Anti-Siglec-H Antibody (Monoclonal, ABM2B55) (Catalog# M30285). Tested in WB application(s). This antibody reacts with Mouse.
Application	WB
Clonality	Monoclonal ABM2B55
Formulation	100 µg in 200 µl PBS containing 0.05% stabilizing protein and 0.05% sodium azide This antibody is supplied in a stabilized formulation. Compatibility with conjugation reactions depends on the chemistry of the conjugation method used. For conjugation methods that are not compatible with the stabilizing components present in this formulation, a carrier-free antibody format is required.
Storage Instructions	Store the antibody at 4°C, stable for 6 months. For long-term storage, store at -20°C. Avoid repeated freeze and thaw cycles.
Host	Rat
Uniprot ID	Q3Y597

Technical Details

Immunogen	A partial length recombinant mouse Siglec-H protein (amino acids 109-309)
Isotype	IgG2a Kappa
Form	Liquid
Concentration	0.5-1mg/ml, actual concentration vary by lot. Use suggested dilution ratio to decide dilution procedure.
Purification	Protein G Chromatography
Suggested Dilutions	Western blot: 2-4 µg/ml

Anti-Siglec-H Antibody (Monoclonal, ABM2B55) (M30285) Images



Western blot analysis of Siglec-H. Anti-Siglec-H antibody (Clone: ABM2B55) was used at 2 μ g/ml

Submit a product review to Biocompare.com

Submit a review of this product to Biocompare.com to receive a \$20 Amazon.com giftcard! Your reviews help your fellow scientists make the right decisions. Thank you for your contribution.



Anti-Siglec-H Antibody (Monoclonal, ABM2B55)

For Research Use Only. Not for use in diagnostic procedures.