

## Anti-CERS4 Antibody (N-Term)

Catalog Number: M30561

### About CERS4

May be either a bona fide (dihydro)ceramide synthase or a modulator of its activity. When overexpressed in cells is involved in the production of sphingolipids containing different fatty acid donors (N-linked stearyl- (C18) or arachidoyl- (C20) ceramides) in a fumonisin B1-independent manner (By similarity).

### Overview

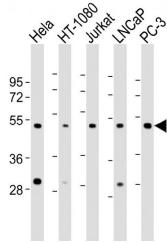
Product Name	Anti-CERS4 Antibody (N-Term)
Reactive Species	Human
Description	Boster Bio Anti-CERS4 Antibody (N-Term) (Catalog # M30561). Tested in WB, Flow Cytometry application(s). This antibody reacts with Human.
Application	Flow Cytometry, WB
Clonality	Polyclonal
Formulation	Purified polyclonal antibody supplied in PBS with 0.09% (W/V) sodium azide.
Storage Instructions	Maintain refrigerated at 2-8°C for up to 2 weeks. For long-term storage, store at -20°C in small aliquots to prevent freeze-thaw cycles.
Host	Rabbit
Uniprot ID	Q9HA82

### Technical Details

Immunogen	This CERS4 antibody is generated from a rabbit immunized with a KLH conjugated synthetic peptide between 21-51 amino acids from human CERS4.
Predicted Reactive Species	Bovine, Chicken, Hamster, Horse, Mouse, Rabbit, Rat
Isotype	Rabbit IgG
Purification	This antibody is purified through a protein A column, followed by peptide affinity purification.
Suggested Dilutions	Dilute the sample so that the expected range of concentrations fall within the detection range of this kit. If the expected range of concentration is unknown, a pilot test should be conducted to decide the optimal dilution ratio for your samples. Some PubMed article(s) citing the expression level of this target are as follows: Boster Bio's internal QC testing used: WB: 1:2000 FC: 1:25



## Anti-CERS4 Antibody (N-Term) (M30561) Images



All lanes : Anti-CERS4 Antibody (N-Term) at 1:2000 dilution

Lane 1: HeLa whole cell lysate

Lane 2: HT-1080 whole cell lysate

Lane 3: Jurkat whole cell lysate

Lane 4: LNCaP whole cell lysate

Lane 5: PC-3 whole cell lysate

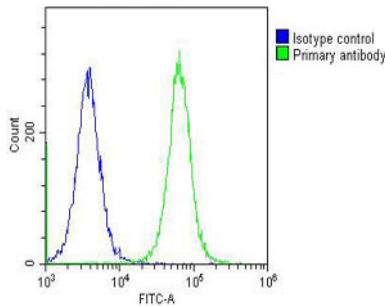
Lysates/proteins at 20 µg per lane.

Secondary

Goat Anti-Rabbit IgG, (H+L), Peroxidase conjugated at 1/10000 dilution.

Predicted band size : 46 kDa

Blocking/Dilution buffer: 5% NFDM/TBST.



Overlay histogram showing HeLa cells stained with M30561 (green line). The cells were fixed with 2% paraformaldehyde (10 min) and then permeabilized with 90% methanol for 10 min. The cells were then incubated in 2% bovine serum albumin to block non-specific protein-protein interactions followed by the antibody (M30561, 1:25 dilution) for 60 min at 37°C. The secondary antibody used was Goat-Anti-Rabbit IgG, DyLight® 488 Conjugated Highly Cross-Adsorbed at 1/200 dilution for 40 min at 37°C. Isotype control antibody (blue line) was rabbit IgG (1µg/1x10<sup>6</sup> cells) used under the same conditions. Acquisition of >10, 000 events was performed.

## Submit a product review to Biocompare.com

Submit a review of this product to Biocompare.com to receive a \$20 Amazon.com giftcard! Your reviews help your fellow scientists make the right decisions. Thank you for your contribution.



Anti-CERS4 Antibody (N-Term)