

Anti-RAB7L1 Antibody

Catalog Number: M30753

About RAB29

Rab GTPase key regulator in vesicle trafficking. Essential for maintaining the integrity of the endosome-trans- Golgi network structure. Together with LRRK2, plays a role in the retrograde trafficking pathway for recycling proteins, such as mannose 6 phosphate receptor (M6PR), between lysosomes and the Golgi apparatus in a retromer-dependent manner. Regulates neuronal process morphology in the intact central nervous system (CNS). May play a role in the formation of typhoid toxin transport intermediates during Salmonella enterica serovar Typhi (S.Typhi) epithelial cell infection.

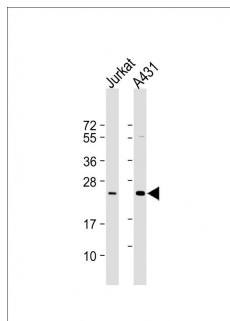
Overview

Product Name	Anti-RAB7L1 Antibody
Reactive Species	Human
Description	Boster Bio Anti-RAB7L1 Antibody (Catalog # M30753). Tested in WB application(s). This antibody reacts with Human.
Application	WB
Clonality	Monoclonal 1789CT823.71.1.1
Formulation	Purified monoclonal antibody supplied in PBS with 0.09% (W/V) sodium azide.
Storage Instructions	Maintain refrigerated at 2-8°C for up to 2 weeks. For long-term storage, store at -20°C in small aliquots to prevent freeze-thaw cycles.
Host	Mouse
Uniprot ID	O14966

Technical Details

Immunogen	This RAB7L1 antibody is generated from a mouse immunized with a recombinant protein of human RAB7L1.
Predicted Reactive Species	Bovine, Chicken, Hamster, Horse, Mouse, Rabbit, Rat
Isotype	IgG1
Purification	This antibody is purified through a protein G column, followed by dialysis against PBS.
Suggested Dilutions	WB: 1:1000-1:2000

Anti-RAB7L1 Antibody (M30753) Images



All lanes : Anti-RAB7L1 Antibody at 1:1000-1:2000 dilution
Lane 1: Jurkat whole cell lysate
Lane 2: A431 whole cell lysate
Lysates/proteins at 20 µg per lane. Secondary Goat Anti-mouse IgG, (H+L), Peroxidase conjugated at 1/10000 dilution. Predicted band size : 23 kDa
Blocking/Dilution buffer: 5% NFDM/TBST.

Submit a product review to Biocompare.com

Submit a review of this product to Biocompare.com to receive a \$20 Amazon.com giftcard! Your reviews help your fellow scientists make the right decisions. Thank you for your contribution.



Anti-RAB7L1 Antibody

For Research Use Only. Not for use in diagnostic procedures.