

Anti-Mouse IgG2a kappa Rabbit Monoclonal Antibody, Clone#RM107

Catalog Number: M30946-1

Overview

Product Name	Anti-Mouse IgG2a kappa Rabbit Monoclonal Antibody, Clone#RM107
Reactive Species	Mouse
Description	Boster Bio Anti-Mouse IgG2a kappa Rabbit Monoclonal Antibody, Clone#RM107 (Catalog # M30946-1). Tested in ELISA, WB applications. This antibody reacts with Mouse.
Application	ELISA, WB
Clonality	Monoclonal RM107
Formulation	50% Glycerol/PBS with 1% BSA and 0.09% sodium azide
Storage Instructions	Store at -20°C for one year. Avoid repeated freeze-thaw cycles.
Host	Rabbit
Uniprot ID	P01863

Technical Details

Immunogen	Mouse IgG
Cross Reactivity	This antibody reacts to the Fab region of mouse IgG2ak. No cross-reactivity with mouse IgG2aI, IgG1, IgG3, IgM, IgA, IgE, human IgG, rat IgG, or goat IgG.
Isotype	Rabbit IgG
Form	Liquid
Concentration	1 mg/mL
Purification	Protein A affinity purified from an animal origin-free culture supernatant
Suggested Dilutions	<p>Dilute the sample so that the expected range of concentrations fall within the detection range of this kit.</p> <p>If the expected range of concentration is unknown, a pilot test should be conducted to decide the optimal dilution ratio for your samples.</p> <p>Some PubMed article(s) citing the expression level of this target are as follows:</p> <p>Boster Bio's internal QC testing used:</p> <p>ELISA: 0.005 ug/mL – 0.2 ug/mL</p> <p>WB: 0.1 ug/mL-0.5 ug/mL.</p>

Anti-Mouse IgG2a kappa Rabbit Monoclonal Antibody, Clone#RM107 (M30946-1) Images

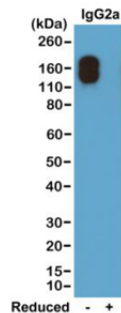


Figure 1. Western Blotting result
Western blot of nonreduced(-) and reduced(+) mouse IgG2a kappa(20 ng/lane), using 0.2ug/mL of clone RM107. This antibody only reacted to nonreduced Mouse IgG2a kappa

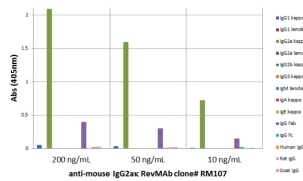


Figure 2. ELISA result showing specificity
ELISA of mouse immunoglobulins shows RM107 reacted to the Fab region of mouse IgG2a; no cross reactivity with IgG2a kappa, IgG1, IgG3, IgM, IgA, IgE, human IgG, rat IgG, or goat IgG. The plate was coated with 50 ng/well of different immunoglobulins. 200 ng/mL, 50 ng/mL, or 10 ng/mL of RM107 was used as the primary antibody. An alkaline phosphatase conjugated anti-rabbit IgG as the secondary antibody.

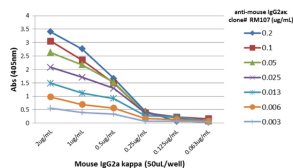


Figure 3. ELISA result showing specificity
A titer ELISA of mouse IgG2a kappa. The plate was coated with different amounts of mouse IgG2a. A serial dilution of RM107 was used as the primary antibody. An alkaline phosphatase conjugated anti-rabbit IgG as the secondary antibody

1 Publications Citing This Product

1. PubMed ID: 24520214, Inhibition of Lymphangiogenesis of Endothelial Progenitor Cells with VEGFR-3 siRNA Delivered with PEI-alginate Nanoparticles

Visit bosterbio.com/anti-mouse-igg2a-kappa-rabbit-monoclonal-antibody-clone-rm107-m30946-1-boster.html to see all 1 publications.

Submit a product review to [Biocompare.com](https://www.biocompare.com)

Submit a review of this product to [Biocompare.com](https://www.biocompare.com) to receive a \$20 Amazon.com giftcard! Your reviews help your fellow scientists make the right decisions. Thank you for your contribution.



Anti-Mouse IgG2a kappa Rabbit Monoclonal Antibody, Clone#RM107