

Anti-Mouse IgG2a Rabbit Monoclonal Antibody, Clone#RM219

Catalog Number: M30946-2

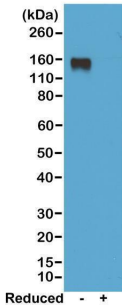
Overview

Product Name	Anti-Mouse IgG2a Rabbit Monoclonal Antibody, Clone#RM219
Reactive Species	Mouse
Description	Boster Bio Anti-Mouse IgG2a Rabbit Monoclonal Antibody, Clone#RM219 (Catalog # M30946-2). Tested in ELISA, WB applications. This antibody reacts with Mouse.
Application	ELISA, WB
Clonality	Monoclonal RM219
Formulation	50% Glycerol/PBS with 1% stabilizing protein and 0.09% sodium azide This antibody is supplied in a stabilized formulation. Compatibility with conjugation reactions depends on the chemistry of the conjugation method used. For conjugation methods that are not compatible with the stabilizing components present in this formulation, a carrier-free antibody format is required.
Storage Instructions	Store at -20°C for one year. Avoid repeated freeze-thaw cycles.
Host	Rabbit
Uniprot ID	P01863

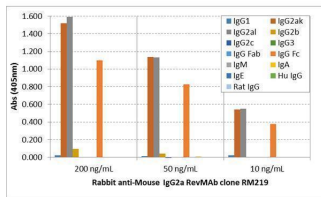
Technical Details

Immunogen	Mouse IgG2a
Cross Reactivity	This antibody reacts to the Fc region of mouse IgG2a. No cross-reactivity with mouse IgG1, IgG2b, IgG2c, IgG3, IgM, IgA, IgE, human IgG, or rat IgG.
Isotype	Rabbit IgG
Form	Liquid
Concentration	1 mg/mL
Purification	Protein A affinity purified from an animal origin-free culture supernatant
Suggested Dilutions	ELISA: 0.005 ug/mL - 0.2 ug/mL WB: 0.5 ug/mL-2 ug/mL.

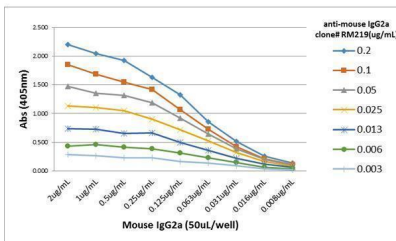
Anti-Mouse IgG2a Rabbit Monoclonal Antibody, Clone#RM219 (M30946-2) Images



Western blot of nonreduced(-) and reduced(+) mouse IgG2a, using 0.5ug/mL of clone RM219. This antibody reacts to nonreduced IgG2a (~150 kDa).



ELISA of mouse immunoglobulins shows RM219 reacts to the Fc region of mouse IgG2a; no cross reactivity with IgG1, IgG2b, IgG2c, IgG3, IgM, IgA, IgE, human IgG, or rat IgG. The plate was coated with 50 ng/well of different immunoglobulins. 200 ng/mL, 50 ng/mL, or 10 ng/mL of RM219 was used as the primary antibody. An alkaline phosphatase conjugated anti-rabbit IgG as the secondary antibody.



A titer ELISA of mouse IgG2a. The plate was coated with different amounts of mouse IgG2a. A serial dilution of RM219 was used as the primary antibody. An alkaline phosphatase conjugated anti-rabbit IgG as the secondary antibody.

1 Publications Citing This Product

1. PubMed ID: 24520214, Inhibition of Lymphangiogenesis of Endothelial Progenitor Cells with VEGFR-3 siRNA Delivered with PEI-alginate Nanoparticles

Visit bosterbio.com/anti-mouse-igg2a-rabbit-monoclonal-antibody-clone-rm219-m30946-2-boster.html to see all 1 publications.

Submit a product review to Biocompare.com

Submit a review of this product to Biocompare.com to receive a \$20 Amazon.com giftcard! Your reviews help your fellow scientists make the right decisions. Thank you for your contribution.



Anti-Mouse IgG2a Rabbit Monoclonal Antibody, Clone#RM219

For Research Use Only. Not for use in diagnostic procedures.