

## Anti-EpCAM/Trop1 Rabbit Monoclonal Antibody

Catalog Number: M30950-1

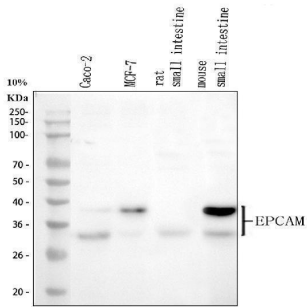
### Overview

Product Name	Anti-EpCAM/Trop1 Rabbit Monoclonal Antibody
Reactive Species	Human, Mouse, Rat
Description	Boster Bio Anti-EpCAM/Trop1 Rabbit Monoclonal Antibody catalog # M30950-1. Tested in WB, IHC, ICC/IF application. This antibody reacts with Human, Mouse, Rat.
Application	IF, IHC, ICC, WB
Clonality	Monoclonal CIB-5
Formulation	Rabbit IgG in stabilizing components, phosphate buffered saline, pH 7.4, 150mM NaCl, 0.02% sodium azide and 50% glycerol. *This antibody is supplied in a stabilized formulation. Compatibility with conjugation reactions depends on the chemistry of the conjugation method used. For conjugation methods that are not compatible with the stabilizing components present in this formulation, a carrier-free antibody format is required.
Storage Instructions	Store at -20°C for one year. For short term storage and frequent use, store at 4°C for up to one month. Avoid repeated freeze-thaw cycles.
Host	Rabbit
Uniprot ID	P16422

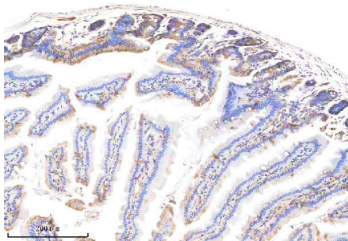
### Technical Details

Immunogen	A synthesized peptide derived from <a href="#">human EpCAM</a>
Isotype	Rabbit IgG
Form	Liquid
Concentration	0.5mg/ml
Purification	Affinity-chromatography
Suggested Dilutions	WB 1:500-2000 IHC 1:50-200 ICC/IF 1:50-200

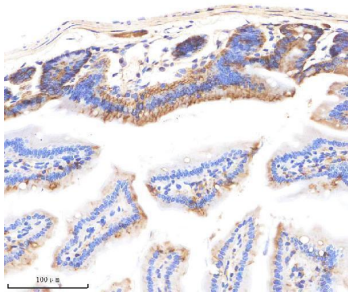
## Anti-EpCAM/Trop1 Rabbit Monoclonal Antibody (M30950-1) Images



Western blot analysis of CD326/EPCAM using anti-CD326/EPCAM antibody (M30950-1). Electrophoresis was performed on a 5-20% SDS-PAGE gel at 70V (Stacking gel) / 90V (Resolving gel) for 2-3 hours. The sample well of each lane was loaded with 30 ug of sample under reducing conditions. Lane 1: human Caco-2 whole cell lysates, Lane 2: human MCF-7 whole cell lysates, Lane 3: rat small intestine tissue lysates, Lane 4: mouse small intestine tissue lysates. After electrophoresis, proteins were transferred to a nitrocellulose membrane at 150 mA for 50-90 minutes. Blocked the membrane with 5% non-fat milk/TBS for 1.5 hour at RT. The membrane was incubated with rabbit anti-CD326/EPCAM antigen affinity purified monoclonal antibody (M30950-1) at 1:500 overnight at 4°C, then washed with TBS-0.1%Tween 3 times with 5 minutes each and probed with a goat anti-rabbit IgG-HRP secondary antibody at a dilution of 1:500 for 1.5 hour at RT. The signal is developed using an Enhanced Chemiluminescent detection (ECL) kit (Catalog # EK1002) with Tanon 5200 system. A specific band was detected for CD326/EPCAM at approximately 35-40 kDa. The expected band size for CD326/EPCAM is at 35 kDa.

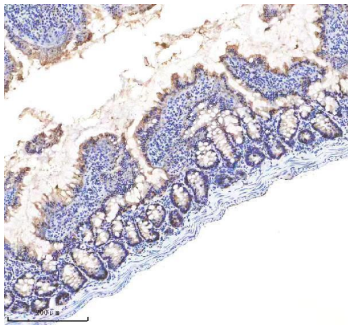


IHC analysis of EpCAM/Trop1 using anti-EpCAM/Trop1 antibody (M30950-1). EpCAM/Trop1 was detected in a paraffin-embedded section of mouse small intestine tissue. Heat mediated antigen retrieval was performed in EDTA buffer (pH 8.0, epitope retrieval solution). The tissue section was blocked with 10% goat serum. The tissue section was then incubated with 1:200 rabbit anti-EpCAM/Trop1 Antibody (M30950-1) overnight at 4°C. Peroxidase Conjugated Goat Anti-rabbit IgG was used as secondary antibody and incubated for 30 minutes at 37°C. The tissue section was developed using HRP Conjugated Rabbit IgG Super Vision Assay Kit (Catalog # SV0002) with DAB as the chromogen.

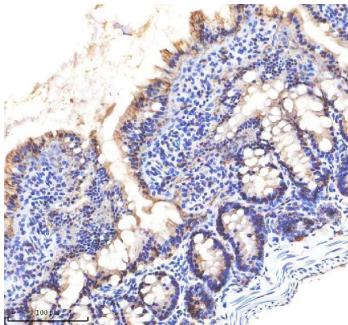


IHC analysis of EpCAM/Trop1 using anti-EpCAM/Trop1 antibody (M30950-1). EpCAM/Trop1 was detected in a paraffin-embedded section of mouse small intestine tissue. Heat mediated antigen retrieval was performed in EDTA buffer (pH 8.0, epitope retrieval solution). The tissue section was blocked with 10% goat serum. The tissue section was then incubated with 1:200 rabbit anti-EpCAM/Trop1 Antibody (M30950-1) overnight at 4°C. Peroxidase Conjugated Goat Anti-rabbit IgG was used as secondary antibody and incubated for 30 minutes at 37°C. The tissue section was developed using HRP Conjugated Rabbit IgG Super Vision Assay Kit (Catalog # SV0002) with DAB as the chromogen.

IHC analysis of EpCAM/Trop1 using anti-EpCAM/Trop1 antibody (M30950-1). EpCAM/Trop1 was detected in a paraffin-embedded section of rat small intestine tissue. Heat



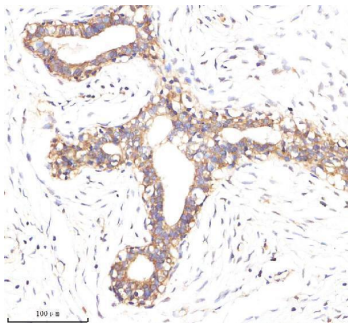
mediated antigen retrieval was performed in EDTA buffer (pH 8.0, epitope retrieval solution). The tissue section was blocked with 10% goat serum. The tissue section was then incubated with 1:200 rabbit anti-EpCAM/Trop1 Antibody (M30950-1) overnight at 4°C. Peroxidase Conjugated Goat Anti-rabbit IgG was used as secondary antibody and incubated for 30 minutes at 37°C. The tissue section was developed using HRP Conjugated Rabbit IgG Super Vision Assay Kit (Catalog # SV0002) with DAB as the chromogen.



IHC analysis of EpCAM/Trop1 using anti-EpCAM/Trop1 antibody (M30950-1). EpCAM/Trop1 was detected in a paraffin-embedded section of rat small intestine tissue. Heat mediated antigen retrieval was performed in EDTA buffer (pH 8.0, epitope retrieval solution). The tissue section was blocked with 10% goat serum. The tissue section was then incubated with 1:200 rabbit anti-EpCAM/Trop1 Antibody (M30950-1) overnight at 4°C. Peroxidase Conjugated Goat Anti-rabbit IgG was used as secondary antibody and incubated for 30 minutes at 37°C. The tissue section was developed using HRP Conjugated Rabbit IgG Super Vision Assay Kit (Catalog # SV0002) with DAB as the chromogen.

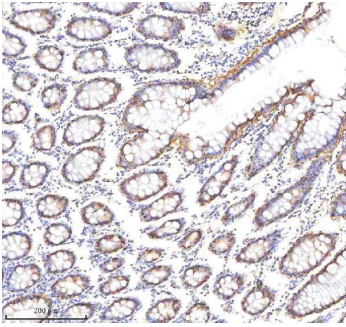


IHC analysis of EpCAM/Trop1 using anti-EpCAM/Trop1 antibody (M30950-1). EpCAM/Trop1 was detected in a paraffin-embedded section of human breast tissue. Heat mediated antigen retrieval was performed in EDTA buffer (pH 8.0, epitope retrieval solution). The tissue section was blocked with 10% goat serum. The tissue section was then incubated with 1:200 rabbit anti-EpCAM/Trop1 Antibody (M30950-1) overnight at 4°C. Peroxidase Conjugated Goat Anti-rabbit IgG was used as secondary antibody and incubated for 30 minutes at 37°C. The tissue section was developed using HRP Conjugated Rabbit IgG Super Vision Assay Kit (Catalog # SV0002) with DAB as the chromogen.

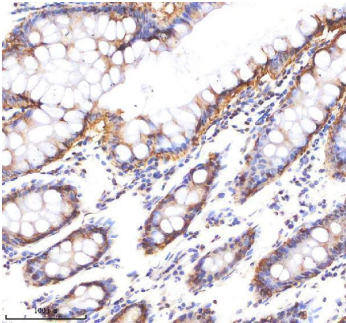


IHC analysis of EpCAM/Trop1 using anti-EpCAM/Trop1 antibody (M30950-1). EpCAM/Trop1 was detected in a paraffin-embedded section of human breast tissue. Heat mediated antigen retrieval was performed in EDTA buffer (pH 8.0, epitope retrieval solution). The tissue section was blocked with 10% goat serum. The tissue section was then incubated with 1:200 rabbit anti-EpCAM/Trop1 Antibody (M30950-1) overnight at 4°C. Peroxidase Conjugated Goat Anti-rabbit IgG was used as secondary antibody and incubated for 30 minutes at 37°C. The tissue section was developed using HRP Conjugated Rabbit IgG Super Vision Assay Kit (Catalog # SV0002) with DAB as the chromogen.

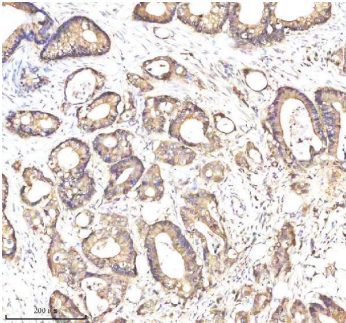
IHC analysis of EpCAM/Trop1 using anti-EpCAM/Trop1 antibody (M30950-1). EpCAM/Trop1 was detected in a paraffin-embedded section of human colon tissue. Heat mediated antigen retrieval was performed in EDTA buffer (pH 8.0, epitope retrieval solution). The tissue section was



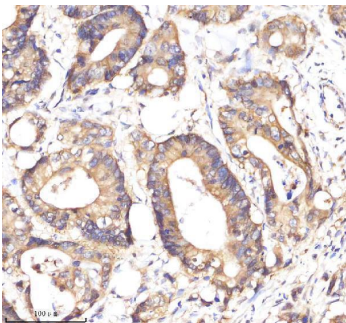
blocked with 10% goat serum. The tissue section was then incubated with 1:200 rabbit anti-EpCAM/Trop1 Antibody (M30950-1) overnight at 4°C. Peroxidase Conjugated Goat Anti-rabbit IgG was used as secondary antibody and incubated for 30 minutes at 37°C. The tissue section was developed using HRP Conjugated Rabbit IgG Super Vision Assay Kit (Catalog # SV0002) with DAB as the chromogen.



IHC analysis of EpCAM/Trop1 using anti-EpCAM/Trop1 antibody (M30950-1). EpCAM/Trop1 was detected in a paraffin-embedded section of human colon tissue. Heat mediated antigen retrieval was performed in EDTA buffer (pH 8.0, epitope retrieval solution). The tissue section was blocked with 10% goat serum. The tissue section was then incubated with 1:200 rabbit anti-EpCAM/Trop1 Antibody (M30950-1) overnight at 4°C. Peroxidase Conjugated Goat Anti-rabbit IgG was used as secondary antibody and incubated for 30 minutes at 37°C. The tissue section was developed using HRP Conjugated Rabbit IgG Super Vision Assay Kit (Catalog # SV0002) with DAB as the chromogen.

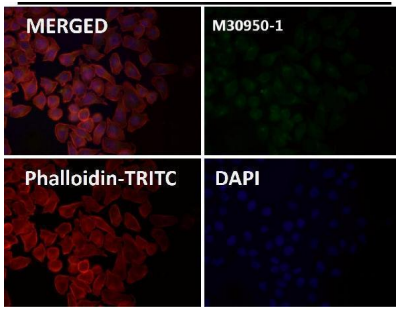


IHC analysis of EpCAM/Trop1 using anti-EpCAM/Trop1 antibody (M30950-1). EpCAM/Trop1 was detected in a paraffin-embedded section of human colon cancer tissue. Heat mediated antigen retrieval was performed in EDTA buffer (pH 8.0, epitope retrieval solution). The tissue section was blocked with 10% goat serum. The tissue section was then incubated with 1:200 rabbit anti-EpCAM/Trop1 Antibody (M30950-1) overnight at 4°C. Peroxidase Conjugated Goat Anti-rabbit IgG was used as secondary antibody and incubated for 30 minutes at 37°C. The tissue section was developed using HRP Conjugated Rabbit IgG Super Vision Assay Kit (Catalog # SV0002) with DAB as the chromogen.



IHC analysis of EpCAM/Trop1 using anti-EpCAM/Trop1 antibody (M30950-1). EpCAM/Trop1 was detected in a paraffin-embedded section of human colon cancer tissue. Heat mediated antigen retrieval was performed in EDTA buffer (pH 8.0, epitope retrieval solution). The tissue section was blocked with 10% goat serum. The tissue section was then incubated with 1:200 rabbit anti-EpCAM/Trop1 Antibody (M30950-1) overnight at 4°C. Peroxidase Conjugated Goat Anti-rabbit IgG was used as secondary antibody and incubated for 30 minutes at 37°C. The tissue section was developed using HRP Conjugated Rabbit IgG Super Vision Assay Kit (Catalog # SV0002) with DAB as the chromogen.

Immunofluorescent analysis of Hela cells, using EpCAM/Trop1 Antibody at 1:50 dilution.



### 3 Publications Citing This Product

1. PubMed ID: 33069797, Shi R,Liu L,Wang F,He Y,Niu Y,Wang C,Zhang X,Zhang X,Zhang H,Chen M,Wang Y.Downregulation of cytokeratin 18 induces cellular partial EMT and stemness through increasing EpCAM expression in breast cancer.Cell Signal.2020 Dec;76:109810.doi:10.1016/j.cellsig
2. PubMed ID: 27221035, A novel multi-target RNAi adenovirus inhibits hepatoma cell proliferation, migration, and induction of angiogenesis
3. PubMed ID: 29179771, Zhang Q, Bu S, Sun J, Xu M, Yao X, He K, Lai D. Stem Cell Res Ther. 2017 Nov 28;8(1):270. doi: 10.1186/s13287-017-0721-0. Paracrine effects of human amniotic epithelial cells protect against chemotherapy-induced ovarian damage

Visit [bosterbio.com/anti-epcam-rabbit-monoclonal-antibody-m30950-1-boster.html](http://bosterbio.com/anti-epcam-rabbit-monoclonal-antibody-m30950-1-boster.html) to see all 3 publications.

### Submit a product review to Biocompare.com

Submit a review of this product to Biocompare.com to receive a \$20 Amazon.com giftcard! Your reviews help your fellow scientists make the right decisions. Thank you for your contribution.



Anti-EpCAM/Trop1 Rabbit Monoclonal Antibody

For Research Use Only. Not for use in diagnostic procedures.