

Anti-DHFRL1 (DHFR2) Mouse Monoclonal Antibody [Clone ID: OT11E2]

Catalog Number: M31689

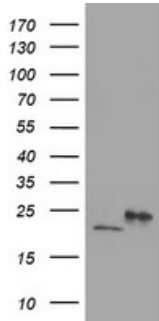
Overview

Product Name	Anti-DHFRL1 (DHFR2) Mouse Monoclonal Antibody [Clone ID: OT11E2]
Reactive Species	Dog, Human, Monkey, Mouse
Description	Boster Bio DHFRL1 mouse monoclonal antibody, clone OT11E2 (formerly 1E2). Catalog# M31689. Tested in IF, WB. This antibody reacts with Human, Monkey, Mouse, Dog.
Application	IF, WB
Clonality	Monoclonal OT11E2
Formulation	PBS (pH 7.3) containing 1% stabilizing protein, 50% glycerol and 0.02% sodium azide. This antibody is supplied in a stabilized formulation. Compatibility with conjugation reactions depends on the chemistry of the conjugation method used. For conjugation methods that are not compatible with the stabilizing components present in this formulation, a carrier-free antibody format is required.
Storage Instructions	Store at -20°C as received.
Host	Mouse
Uniprot ID	Q86XF0

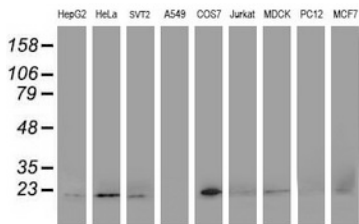
Technical Details

Immunogen	Human recombinant protein fragment corresponding to amino acids 4-185 of human DHFRL1 (NP_789785) produced in E.coli.
Isotype	IgG2b
Concentration	0.73 mg/ml
Purification	Purified from mouse ascites fluids or tissue culture supernatant by affinity chromatography (protein A/G)
Suggested Dilutions	WB 1:500~2000 IF 1:100

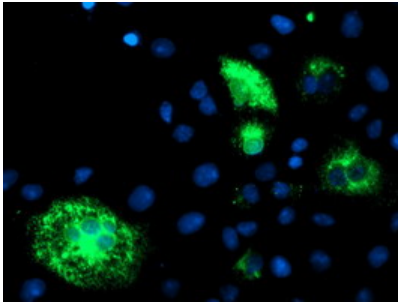
Anti-DHFRL1 (DHFR2) Mouse Monoclonal Antibody [Clone ID: OTI1E2] (M31689) Images



HEK293T cells were transfected with the pCMV6-ENTRY control (Left lane) or pCMV6-ENTRY DHFRL1 (Right lane) cDNA for 48 hrs and lysed. Equivalent amounts of cell lysates (5 ug per lane) were separated by SDS-PAGE and immunoblotted with anti-DHFRL1.



Western blot analysis of extracts (35ug) from 9 different cell lines by using anti-DHFRL1 monoclonal antibody.



Anti-DHFRL1 mouse monoclonal antibody (M31689) immunofluorescent staining of COS7 cells transiently transfected by pCMV6-ENTRY DHFRL1.

Submit a product review to [Biocompare.com](https://www.biocompare.com)

Submit a review of this product to [Biocompare.com](https://www.biocompare.com) to receive a \$20 Amazon.com giftcard! Your reviews help your fellow scientists make the right decisions. Thank you for your contribution.



Anti-DHFRL1 (DHFR2) Mouse Monoclonal Antibody [Clone ID: OTI1E2]

For Research Use Only. Not for use in diagnostic procedures.