

Anti-C14orf166 (RTRAF) Mouse Monoclonal Antibody [Clone ID: OTI2A4]

Catalog Number: M31823

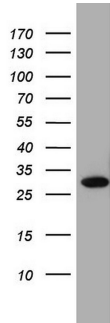
Overview

Product Name	Anti-C14orf166 (RTRAF) Mouse Monoclonal Antibody [Clone ID: OTI2A4]
Reactive Species	Human
Description	Boster Bio C14orf166 mouse monoclonal antibody, clone OTI2A4 (formerly 2A4). Catalog# M31823. Tested in IHC, WB. This antibody reacts with Human.
Application	IHC, WB
Clonality	Monoclonal OTI2A4
Formulation	PBS (pH 7.3) containing 1% stabilizing protein, 50% glycerol and 0.02% sodium azide. This antibody is supplied in a stabilized formulation. Compatibility with conjugation reactions depends on the chemistry of the conjugation method used. For conjugation methods that are not compatible with the stabilizing components present in this formulation, a carrier-free antibody format is required.
Storage Instructions	Store at -20°C as received.
Host	Mouse
Uniprot ID	Q9Y224

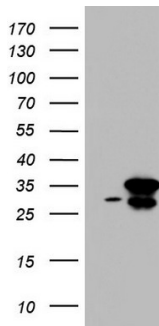
Technical Details

Immunogen	Full length human recombinant protein of human C14orf166 (NP_057123) produced in E.coli.
Isotype	IgG1
Concentration	1 mg/ml
Purification	Purified from mouse ascites fluids or tissue culture supernatant by affinity chromatography (protein A/G)
Suggested Dilutions	WB 1:2000

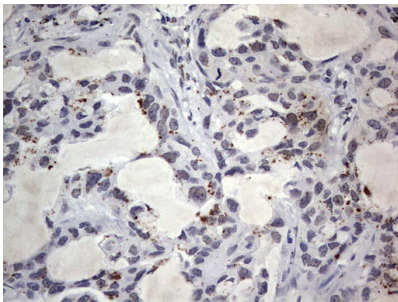
Anti-C14orf166 (RTRAF) Mouse Monoclonal Antibody [Clone ID: OTI2A4] (M31823) Images



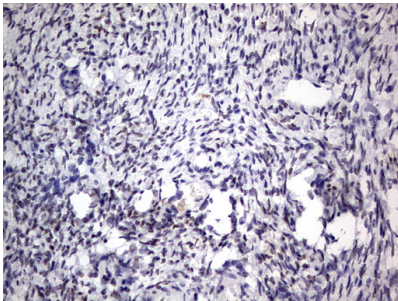
Western blot analysis of A549 cell lysate (35ug) by using anti-C14orf166 monoclonal antibody. Dilution: 1:500



HEK293T cells were transfected with the pCMV6-ENTRY control (Left lane) or pCMV6-ENTRY C14orf166 (Right lane) cDNA for 48 hrs and lysed. Equivalent amounts of cell lysates (5 ug per lane) were separated by SDS-PAGE and immunoblotted with anti-C14orf166.

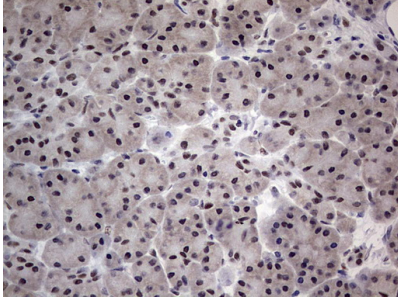
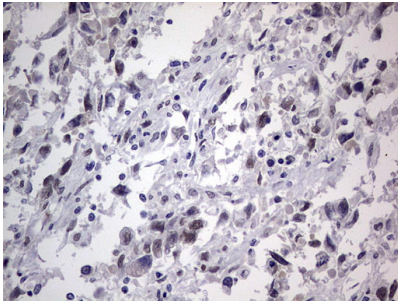


Immunohistochemical staining of paraffin-embedded Carcinoma of Human lung tissue using anti-C14orf166 mouse monoclonal antibody. (M31823) Dilution: 1:150

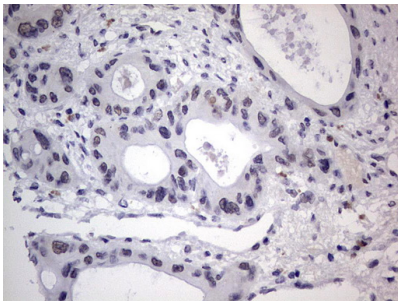


Immunohistochemical staining of paraffin-embedded Human Ovary tissue within the normal limits using anti-C14orf166 mouse monoclonal antibody. (M31823) Dilution: 1:150

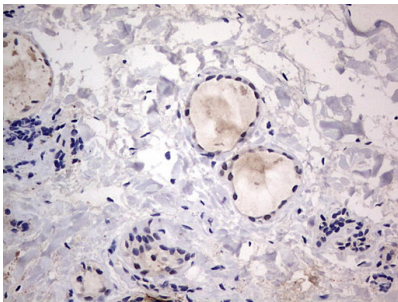
Immunohistochemical staining of paraffin-embedded Adenocarcinoma of Human ovary tissue using anti-C14orf166 mouse monoclonal antibody. (M31823) Dilution: 1:150



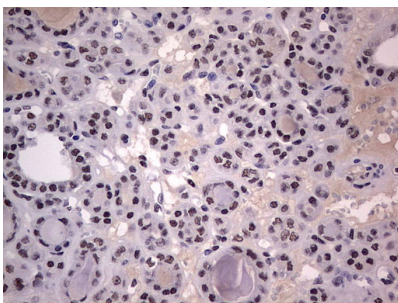
Immunohistochemical staining of paraffin-embedded Human pancreas tissue within the normal limits using anti-C14orf166 mouse monoclonal antibody. (M31823) Dilution: 1:150



Immunohistochemical staining of paraffin-embedded Carcinoma of Human pancreas tissue using anti-C14orf166 mouse monoclonal antibody. (M31823) Dilution: 1:150

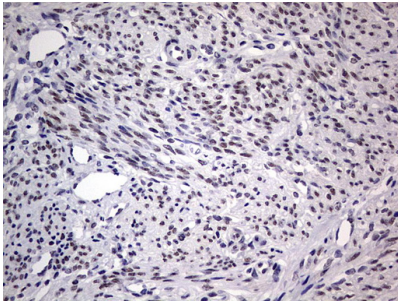


Immunohistochemical staining of paraffin-embedded Human thyroid tissue within the normal limits using anti-C14orf166 mouse monoclonal antibody. (M31823) Dilution: 1:150

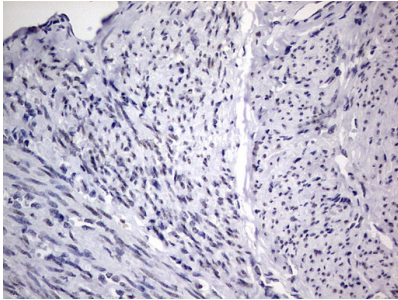


Immunohistochemical staining of paraffin-embedded Carcinoma of Human thyroid tissue using anti-C14orf166 mouse monoclonal antibody. (M31823) Dilution: 1:150

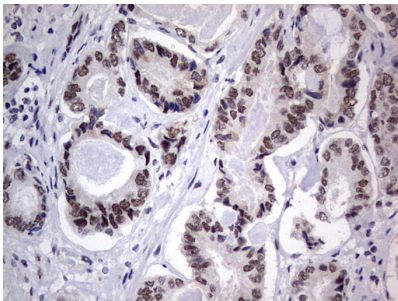
Immunohistochemical staining of paraffin-embedded Human endometrium tissue within the normal limits using anti-C14orf166 mouse monoclonal antibody. (M31823) Dilution:



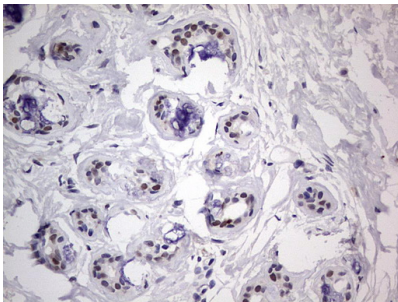
1:150



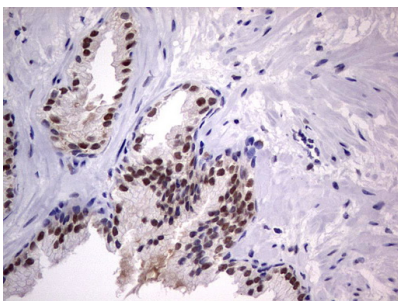
Immunohistochemical staining of paraffin-embedded Adenocarcinoma of Human endometrium tissue using anti-C14orf166 mouse monoclonal antibody. (M31823) Dilution: 1:150



Immunohistochemical staining of paraffin-embedded Human prostate tissue within the normal limits using anti-C14orf166 mouse monoclonal antibody. (M31823) Dilution: 1:150

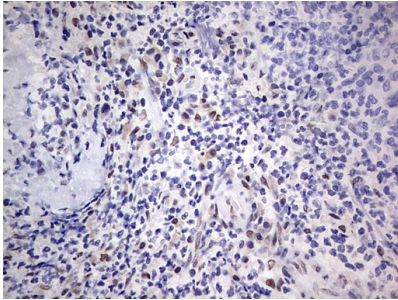
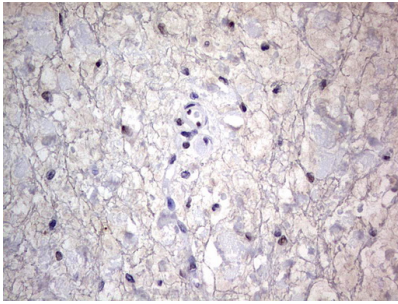


Immunohistochemical staining of paraffin-embedded Human breast tissue within the normal limits using anti-C14orf166 mouse monoclonal antibody. (M31823) Dilution: 1:150

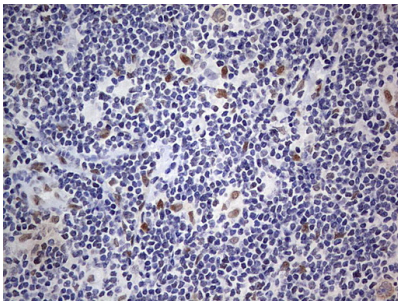


Immunohistochemical staining of paraffin-embedded Carcinoma of Human prostate tissue using anti-C14orf166 mouse monoclonal antibody. (M31823) Dilution: 1:150

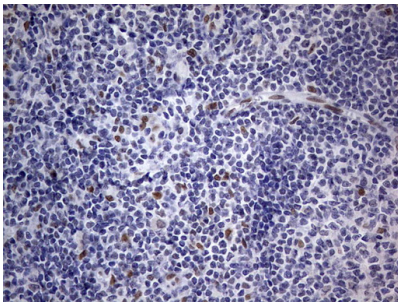
Immunohistochemical staining of paraffin-embedded Human bladder tissue within the normal limits using anti-C14orf166 mouse monoclonal antibody. (M31823) Dilution: 1:150



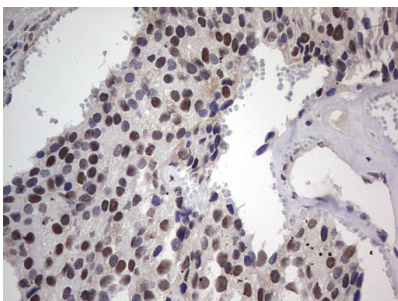
Immunohistochemical staining of paraffin-embedded Human lymph node tissue within the normal limits using anti-C14orf166 mouse monoclonal antibody. (M31823) Dilution: 1:150



Immunohistochemical staining of paraffin-embedded Human lymphoma tissue using anti-C14orf166 mouse monoclonal antibody. (M31823) Dilution: 1:150

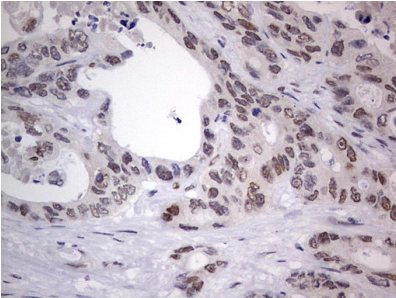
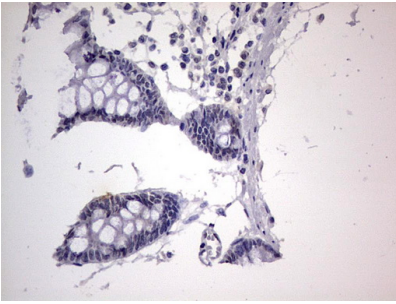


Immunohistochemical staining of paraffin-embedded Human tonsil within the normal limits using anti-C14orf166 mouse monoclonal antibody. (M31823) Dilution: 1:150

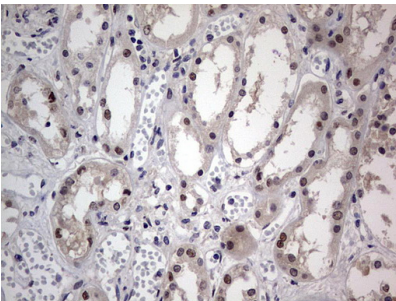


Immunohistochemical staining of paraffin-embedded Adenocarcinoma of Human breast tissue using anti-C14orf166 mouse monoclonal antibody. (M31823) Dilution: 1:150

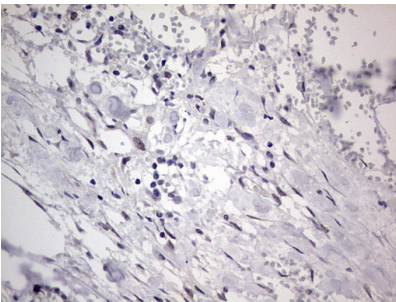
Immunohistochemical staining of paraffin-embedded Human colon tissue within the normal limits using anti-C14orf166 mouse monoclonal antibody. (M31823) Dilution: 1:150



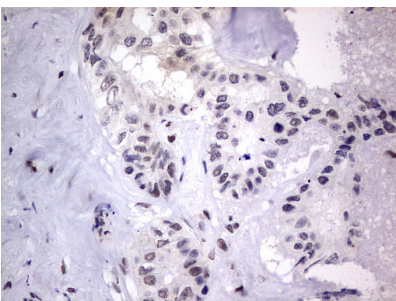
Immunohistochemical staining of paraffin-embedded Adenocarcinoma of Human colon tissue using anti-C14orf166 mouse monoclonal antibody. (M31823) Dilution: 1:150



Immunohistochemical staining of paraffin-embedded Human Kidney tissue within the normal limits using anti-C14orf166 mouse monoclonal antibody. (M31823) Dilution: 1:150

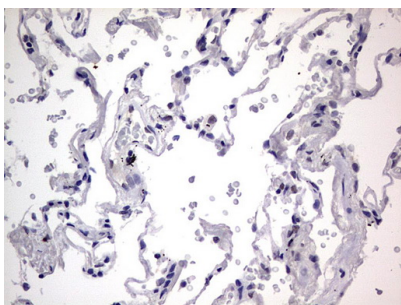


Immunohistochemical staining of paraffin-embedded Carcinoma of Human kidney tissue using anti-C14orf166 mouse monoclonal antibody. (M31823) Dilution: 1:150



Immunohistochemical staining of paraffin-embedded Carcinoma of Human liver tissue using anti-C14orf166 mouse monoclonal antibody. (M31823) Dilution: 1:150

Immunohistochemical staining of paraffin-embedded Human lung tissue within the normal limits using anti-C14orf166 mouse monoclonal antibody. (M31823) Dilution: 1:150



Submit a product review to Biocompare.com

Submit a review of this product to Biocompare.com to receive a \$20 Amazon.com giftcard! Your reviews help your fellow scientists make the right decisions. Thank you for your contribution.



Anti-C14orf166 (RTRAF) Mouse Monoclonal Antibody [Clone ID: OTI2A4]

For Research Use Only. Not for use in diagnostic procedures.