

## Anti-Brachyury Rabbit Monoclonal Antibody

Catalog Number: M31984-1

### Overview

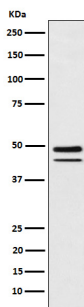
|                      |   |
|----------------------|---|
| Product Name         | Anti-Brachyury Rabbit Monoclonal Antibody   |
| Reactive Species     | Human, Mouse, Rat   |
| Description          | Boster Bio Anti-Brachyury Rabbit Monoclonal Antibody catalog # M31984-1. Tested in WB, IHC, ICC/IF, IP, Flow Cytometry applications. This antibody reacts with Human, Mouse, Rat. |
| Application          | Flow Cytometry, IP, IF, IHC, ICC, WB  |
| Clonality            | Monoclonal 20T93  |
| Formulation          | Rabbit IgG in phosphate buffered saline, pH 7.4, 150mM NaCl, 0.02% sodium azide and 50% glycerol, 0.4-0.5mg/ml BSA.   |
| Storage Instructions | Store at -20°C for one year. For short term storage and frequent use, store at 4°C for up to one month. Avoid repeated freeze-thaw cycles.  |
| Host                 | Rabbit  |
| Uniprot ID           | O15178  |

### Technical Details

|                            |   |
|----------------------------|---|
| Immunogen                  | A synthesized peptide derived from human Brachyury  |
| Predicted Reactive Species | Human, Primate  |
| Isotype                    | IgG   |
| Form                       | Liquid  |
| Concentration              | Actual concentration vary by lot. Use suggested dilution ratio to decide dilution procedure.  |
| Purification               | Affinity-chromatography   |
| Suggested Dilutions        | <p>Dilute the sample so that the expected range of concentrations fall within the detection range of this kit.</p> <p>If the expected range of concentration is unknown, a pilot test should be conducted to decide the optimal dilution ratio for your samples.</p> <p>Some PubMed article(s) citing the expression level of this target are as follows:</p> <p>Boster Bio's internal QC testing used:</p> <p>WB 1:500-1:2000<br/>IHC 1:100-1:500<br/>ICC/IF 1:100-1:500<br/>IP 1:100<br/>FC 1:100</p> |



## Anti-Brachyury Rabbit Monoclonal Antibody (M31984-1) Images



Western blot analysis of Brachyury expression in MUG-Chor1 (human sacral bone chordoma) cell lysate.

### Submit a product review to Biocompare.com

Submit a review of this product to Biocompare.com to receive a \$20 Amazon.com giftcard! Your reviews help your fellow scientists make the right decisions. Thank you for your contribution.



Anti-Brachyury Rabbit Monoclonal Antibody