

Anti-LARGE1 Purified Monoclonal Antibody

Catalog Number: M32176

About LARGE1

LARGE1 serves as a glycosyltransferase which participates in glycosylation of the muscle membrane protein alpha-dystroglycan. Mutations of LARGE1 lead to hypoglycosylation of alpha-dystroglycan and cause congenital muscular dystrophy (MDC1D) associated with severe mental retardation. Altered alpha-dystroglycan glycosylation may also play a role in cancer, as hypoglycosylation of the protein and loss of laminin binding have been demonstrated in invasive carcinoma cells.

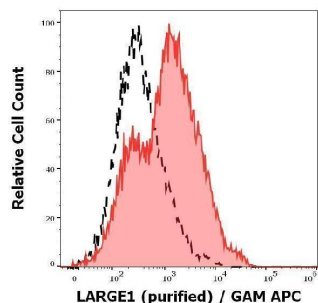
Overview

Product Name	Anti-LARGE1 Purified Monoclonal Antibody
Reactive Species	Human
Description	Boster Bio Anti-LARGE1 Purified Monoclonal Antibody (Catalog# M32176). Tested in Flow Cytometry, WB application(s). This antibody reacts with Human.
Application	Flow Cytometry, WB
Clonality	Monoclonal LARGE-02
Formulation	Phosphate buffered saline (PBS), pH 7.4, 15 mM sodium azide
Storage Instructions	Store at 2-8°C. Do not freeze.
Host	Mouse
Uniprot ID	O95461

Technical Details

Immunogen	Recombinant fragment of human LARGE1 (amino acids 35-142). The mouse monoclonal antibody LARGE-02 recognizes human LARGE1, a glycosyltransferase expressed mainly in the Golgi apparatus.
Predicted Reactive Species	Primate
Cross Reactivity	Cross-reactivity with LARGE2 was not determined.
Isotype	Mouse IgG2b
Form	Liquid
Concentration	1 mg/ml
Purification	Purified by protein-A affinity chromatography.
Suggested Dilutions	Flow cytometry: 1-5 ug/ml. Intracellular staining.

Anti-LARGE1 Purified Monoclonal Antibody (M32176) Images



Separation of Hek293 cells transfected with LARGE1 vector and stained using anti-LARGE1 (LARGE-02) purified antibody (concentration in sample 15 µg/ml, GAM APC, red-filled) from Hek293 cells transfected with LARGE1 and unstained by primary antibody (GAM APC, black-dashed) in flow cytometry analysis (intracellular staining).

Submit a product review to Biocompare.com

Submit a review of this product to Biocompare.com to receive a \$20 Amazon.com giftcard! Your reviews help your fellow scientists make the right decisions. Thank you for your contribution.



Anti-LARGE1 Purified Monoclonal Antibody

For Research Use Only. Not for use in diagnostic procedures.