

Anti-ATP5F1B Mouse Monoclonal Antibody [Clone ID: OTI1F7]

Catalog Number: M32270

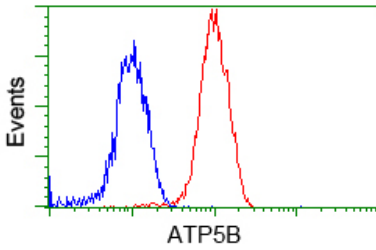
Overview

Product Name	Anti-ATP5F1B Mouse Monoclonal Antibody [Clone ID: OTI1F7]
Reactive Species	Dog, Human, Monkey
Description	Boster Bio Anti-ATP5B mouse monoclonal antibody, clone OTI1F7 (formerly 1F7). Catalog# M32270. Tested in FC, IF, IHC, WB. This antibody reacts with Human, Monkey, Dog.
Conjugate	Unconjugated
Application	Flow Cytometry, IF, IHC, WB
Clonality	Monoclonal OTI1F7
Formulation	PBS (pH 7.3) containing 1% stabilizing protein, 50% glycerol and 0.02% sodium azide. This antibody is supplied in a stabilized formulation. Compatibility with conjugation reactions depends on the chemistry of the conjugation method used. For conjugation methods that are not compatible with the stabilizing components present in this formulation, a carrier-free antibody format is required.
Storage Instructions	Store at -20°C for one year. For short term storage and frequent use, store at 4°C for up to one month. Avoid repeated freeze-thaw cycles.
Host	Mouse
Uniprot ID	P06576

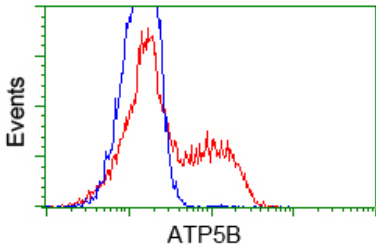
Technical Details

Immunogen	Full length human recombinant protein of human ATP5B (NP_001677) produced in HEK293T cell.
Isotype	IgG1
Concentration	0.93 mg/ml
Purification	Purified from mouse ascites fluids or tissue culture supernatant by affinity chromatography (protein A/G)
Suggested Dilutions	WB: 1:2000 IHC: 1:50 IF: 1:100 Flow cytometry: 1:100

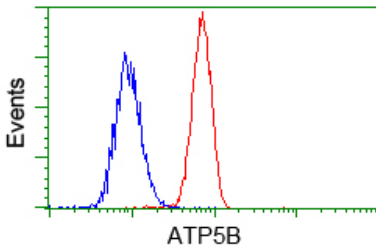
Anti-ATP5F1B Mouse Monoclonal Antibody [Clone ID: OTI1F7] (M32270) Images



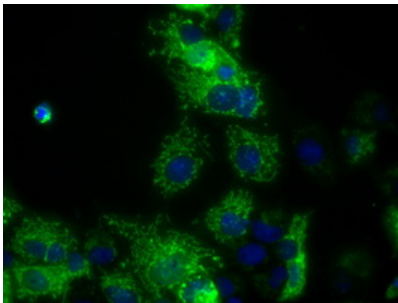
Flow cytometric analysis of Jurkat cells



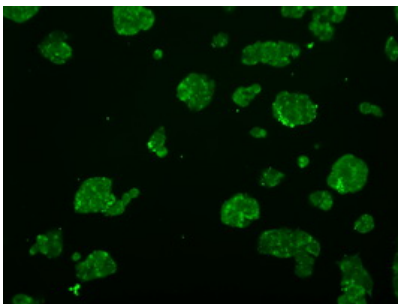
HEK293T cells transfected with either pCMV6-ENTRY ATP5B (Red) or empty vector control plasmid (Blue) were immunostained with anti-ATP5B mouse monoclonal (M32270)



Flow cytometric analysis of HeLa cells

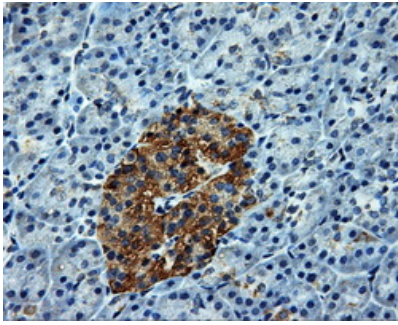


Anti-ATP5B mouse monoclonal antibody (M32270) immunofluorescent staining of COS7 cells transiently transfected by pCMV6-ENTRY ATP5B.

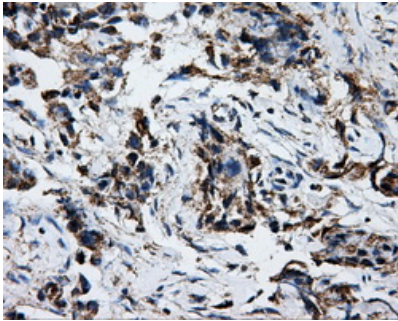


Immunofluorescent staining of HepG2 cells using anti-ATP5B mouse monoclonal antibody (M32270).

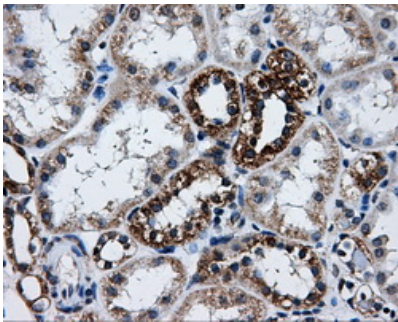
Immunohistochemical staining of paraffin-embedded pancreas tissue within the normal limits using anti-



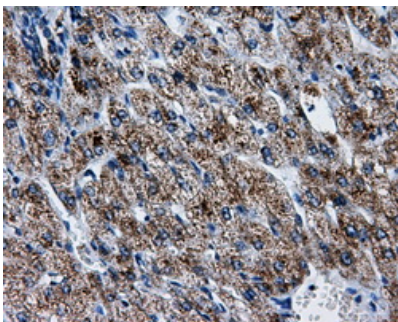
ATP5Bmouse monoclonal antibody. (Heat-induced epitope retrieval by 10mM citric buffer)



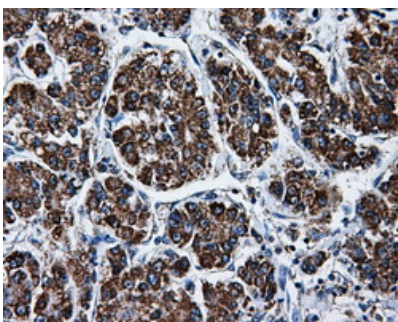
Immunohistochemical staining of paraffin-embedded Adenocarcinoma of breast tissue using anti-ATP5B mouse monoclonal antibody. (Heat-induced epitope retrieval by 10mM citric buffer)



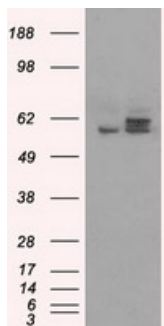
Immunohistochemical staining of paraffin-embedded Kidney tissue within the normal limits using anti-ATP5Bmouse monoclonal antibody. (Heat-induced epitope retrieval by 10mM citric buffer)



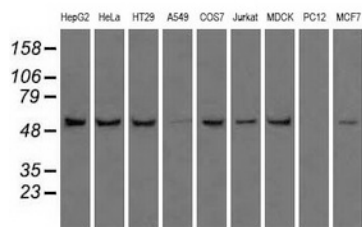
Immunohistochemical staining of paraffin-embedded liver tissue within the normal limits using anti-ATP5Bmouse monoclonal antibody. (Heat-induced epitope retrieval by 10mM citric buffer)



Immunohistochemical staining of paraffin-embedded Carcinoma of liver tissue using anti-ATP5Bmouse monoclonal antibody. (Heat-induced epitope retrieval by 10mM citric buffer)



HEK293T cells were transfected with the pCMV6-ENTRY control (Left lane) or pCMV6-ENTRY ATP5B (Right lane) cDNA for 48 hrs and lysed. Equivalent amounts of cell lysates (5 ug per lane) were separated by SDS-PAGE and immunoblotted with anti-ATP5B.



Western blot analysis of extracts (35ug) from 9 different cell lines by using anti-ATP5B monoclonal antibody.

Submit a product review to Biocompare.com

Submit a review of this product to Biocompare.com to receive a \$20 Amazon.com giftcard! Your reviews help your fellow scientists make the right decisions. Thank you for your contribution.



Anti-ATP5F1B Mouse Monoclonal Antibody [Clone ID: OT11F7]

For Research Use Only. Not for use in diagnostic procedures.