

Anti-ATP5ME Mouse Monoclonal Antibody [Clone ID: OTI1E6]

Catalog Number: M32370

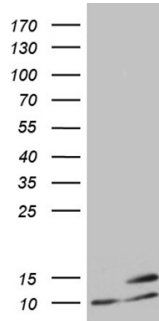
Overview

Product Name	Anti-ATP5ME Mouse Monoclonal Antibody [Clone ID: OTI1E6]
Reactive Species	Human
Description	Boster Bio ATP5I mouse monoclonal antibody, clone OTI1E6. Catalog# M32370. Tested in IHC, WB. This antibody reacts with Human.
Application	IHC, WB
Clonality	Monoclonal OTI1E6
Formulation	PBS (PH 7.3) containing 1% BSA, 50% glycerol and 0.02% sodium azide.
Storage Instructions	Store at -20°C as received.
Host	Mouse
Uniprot ID	P56385

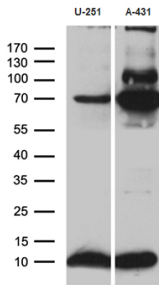
Technical Details

Immunogen	Full length human recombinant protein of human ATP5I (NP_009031) produced in E.coli.
Isotype	IgG1
Concentration	1 mg/ml
Purification	Purified from mouse ascites fluids or tissue culture supernatant by affinity chromatography (protein A/G)
Suggested Dilutions	Dilute the sample so that the expected range of concentrations fall within the detection range of this kit. If the expected range of concentration is unknown, a pilot test should be conducted to decide the optimal dilution ratio for your samples. Some PubMed article(s) citing the expression level of this target are as follows:

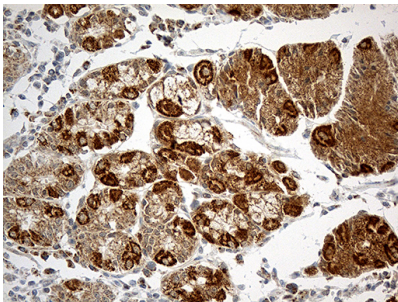
Anti-ATP5ME Mouse Monoclonal Antibody [Clone ID: OTI1E6] (M32370) Images



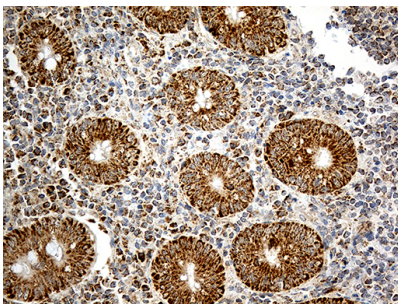
HEK293T cells were transfected with the pCMV6-ENTRY control (Left lane) or pCMV6-ENTRY ATP5I (Right lane) cDNA for 48 hrs and lysed. Equivalent amounts of cell lysates (5 ug per lane) were separated by SDS-PAGE and immunoblotted with anti-ATP5I (1:2000).



Western blot analysis of extracts (35ug) from 2 different cell lines by using anti-ATP5I monoclonal antibody (1:500).

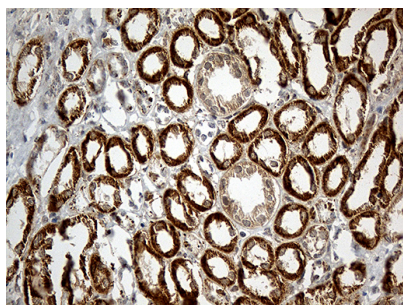


Immunohistochemical staining of paraffin-embedded Human gastric tissue within the normal limits using anti-ATP5I mouse monoclonal antibody. (Heat-induced epitope retrieval by 1mM EDTA in 10mM Tris buffer (pH8.5) at 120°C for 3min)



Immunohistochemical staining of paraffin-embedded Human appendix tissue within the normal limits using anti-ATP5I mouse monoclonal antibody. (Heat-induced epitope retrieval by 1mM EDTA in 10mM Tris buffer (pH8.5) at 120°C for 3min)

Immunohistochemical staining of paraffin-embedded Human Kidney tissue within the normal limits using anti-ATP5I mouse monoclonal antibody. (Heat-induced epitope retrieval by 1mM EDTA in 10mM Tris buffer (pH8.5) at 120°C for 3min)



Submit a product review to Biocompare.com

Submit a review of this product to Biocompare.com to receive a \$20 Amazon.com giftcard! Your reviews help your fellow scientists make the right decisions. Thank you for your contribution.



Anti-ATP5ME Mouse Monoclonal Antibody [Clone ID: OTI1E6]