

## Anti-INAVA Mouse Monoclonal Antibody [Clone ID: OTI6A6]

Catalog Number: M32411

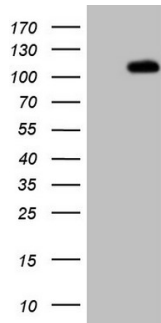
### Overview

Product Name	Anti-INAVA Mouse Monoclonal Antibody [Clone ID: OTI6A6]
Reactive Species	Human
Description	Boster Bio C1orf106 mouse monoclonal antibody, clone OTI6A6 (formerly 6A6). Catalog# M32411. Tested in IHC, WB. This antibody reacts with Human.
Application	IHC, WB
Clonality	Monoclonal OTI6A6
Formulation	PBS (pH 7.3) containing 1% stabilizing protein, 50% glycerol and 0.02% sodium azide. This antibody is supplied in a stabilized formulation. Compatibility with conjugation reactions depends on the chemistry of the conjugation method used. For conjugation methods that are not compatible with the stabilizing components present in this formulation, a carrier-free antibody format is required.
Storage Instructions	Store at -20°C as received.
Host	Mouse
Uniprot ID	Q3KP66

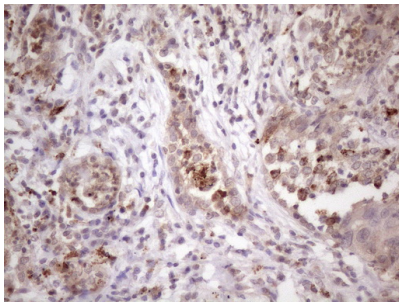
### Technical Details

Immunogen	Human recombinant protein fragment corresponding to amino acids 1-270 of human C1ORF106 (NP_060735) produced in E.coli.
Isotype	IgG1
Concentration	1 mg/ml
Purification	Purified from mouse ascites fluids or tissue culture supernatant by affinity chromatography (protein A/G)
Suggested Dilutions	WB 1:2000 IHC 1:150

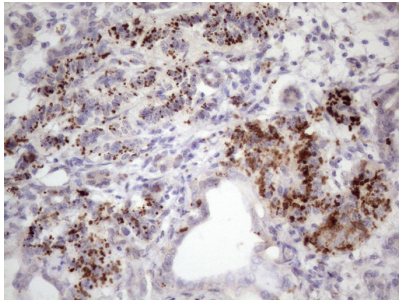
## Anti-INAVA Mouse Monoclonal Antibody [Clone ID: OTI6A6] (M32411) Images



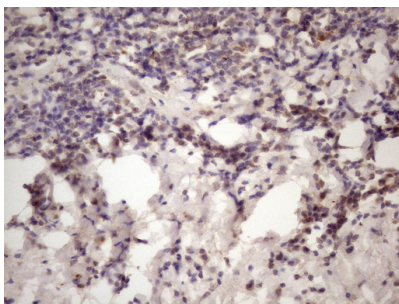
HEK293T cells were transfected with the pCMV6-ENTRY control (Left lane) or pCMV6-ENTRY C1orf106 (Right lane) cDNA for 48 hrs and lysed. Equivalent amounts of cell lysates (5 ug per lane) were separated by SDS-PAGE and immunoblotted with anti-C1orf106 (1:2000).



Immunohistochemical staining of paraffin-embedded Carcinoma of Human lung tissue using anti-C1orf106 mouse monoclonal antibody. (Heat-induced epitope retrieval by 1 mM EDTA in 10mM Tris)



Immunohistochemical staining of paraffin-embedded Carcinoma of Human pancreas tissue using anti-C1orf106 mouse monoclonal antibody. (Heat-induced epitope retrieval by 1 mM EDTA in 10mM Tris)



Immunohistochemical staining of paraffin-embedded Human tonsil within the normal limits using anti-C1orf106 mouse monoclonal antibody. (Heat-induced epitope retrieval by 1 mM EDTA in 10mM Tris)

**Submit a product review to Biocompare.com**

Submit a review of this product to Biocompare.com to receive a \$20 Amazon.com giftcard! Your reviews help your fellow scientists make the right decisions. Thank you for your contribution.



For Research Use Only. Not for use in diagnostic procedures.