

## Anti-PYCR1 Antibody (C-term)

Catalog Number: M32428

### About PYCR3

The protein encoded by this gene is a member of the platelet-derived growth factor/vascular endothelial growth factor (PDGF/VEGF) family and is active in angiogenesis, lymphangiogenesis, and endothelial cell growth. This secreted protein undergoes a complex proteolytic maturation, generating multiple processed forms which bind and activate VEGFR-2 and VEGFR-3 receptors. This protein is structurally and functionally similar to vascular endothelial growth factor C.

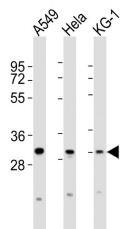
### Overview

Product Name	Anti-PYCR1 Antibody (C-term)
Reactive Species	Human
Description	Boster Bio Anti-PYCR1 Antibody (C-term) (Catalog # M32428). Tested in WB application(s). This antibody reacts with Human.
Application	WB
Clonality	Polyclonal
Formulation	Purified polyclonal antibody supplied in PBS with 0.09% (W/V) sodium azide.
Storage Instructions	Maintain refrigerated at 2-8°C for up to 2 weeks. For long-term storage, store at -20°C in small aliquots to prevent freeze-thaw cycles.
Host	Rabbit
Uniprot ID	Q53H96

### Technical Details

Immunogen	This PYCR1 antibody is generated from a rabbit immunized with a KLH conjugated synthetic peptide between 221-255 amino acids from the C-terminal region of human PYCR1.
Predicted Reactive Species	Bovine
Isotype	Rabbit IgG
Purification	This antibody is purified through a protein A column, followed by peptide affinity purification.
Suggested Dilutions	WB: 1:2000

## Anti-PYCRL Antibody (C-term) (M32428) Images



All lanes : Anti-PYCRL Antibody (C-term) at 1:2000 dilution  
Lane 1: A549 whole cell lysates  
Lane 2: HeLa whole cell lysates  
Lane 3: KG-1 whole cell lysates  
Lysates/proteins at 20 µg per lane. Secondary Goat Anti-Rabbit IgG, (H+L), Peroxidase conjugated at 1/10000 dilution  
Predicted band size : 29 kDa  
Blocking/Dilution buffer: 5% NFDM/TBST.

### Submit a product review to Biocompare.com

Submit a review of this product to Biocompare.com to receive a \$20 Amazon.com giftcard! Your reviews help your fellow scientists make the right decisions. Thank you for your contribution.



Anti-PYCRL Antibody (C-term)

For Research Use Only. Not for use in diagnostic procedures.