

## Anti-PYCR3 Mouse Monoclonal Antibody [Clone ID: OTI1B12]

Catalog Number: M32428-2

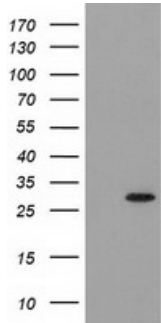
### Overview

Product Name	Anti-PYCR3 Mouse Monoclonal Antibody [Clone ID: OTI1B12]
Reactive Species	Human, Rat
Description	Boster Bio PYCRL mouse monoclonal antibody, clone OTI1B12 (formerly 1B12). Catalog# M32428-2. Tested in FC, IF, IHC, WB. This antibody reacts with Human, Rat.
Application	Flow Cytometry, IF, IHC, WB
Clonality	Monoclonal OTI1B12
Formulation	PBS (pH 7.3) containing 1% stabilizing protein, 50% glycerol and 0.02% sodium azide. This antibody is supplied in a stabilized formulation. Compatibility with conjugation reactions depends on the chemistry of the conjugation method used. For conjugation methods that are not compatible with the stabilizing components present in this formulation, a carrier-free antibody format is required.
Storage Instructions	Store at -20°C as received.
Host	Mouse
Uniprot ID	Q53H96

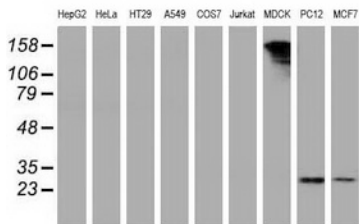
### Technical Details

Immunogen	Full length human recombinant protein of human PYCRL (NP_075566) produced in HEK293T cell.
Isotype	IgG1
Concentration	0.85 mg/ml
Purification	Purified from mouse ascites fluids or tissue culture supernatant by affinity chromatography (protein A/G)
Suggested Dilutions	WB 1:500~2000 IHC 1:150 IF 1:100 Flow Cytometry 1:100

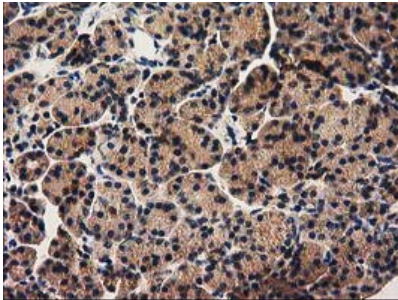
## Anti-PYCR3 Mouse Monoclonal Antibody [Clone ID: OTI1B12] (M32428-2) Images



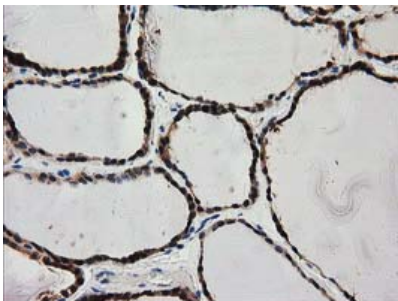
HEK293T cells were transfected with the pCMV6-ENTRY control (Left lane) or pCMV6-ENTRY PYCRL (Right lane) cDNA for 48 hrs and lysed. Equivalent amounts of cell lysates (5 ug per lane) were separated by SDS-PAGE and immunoblotted with anti-PYCRL.



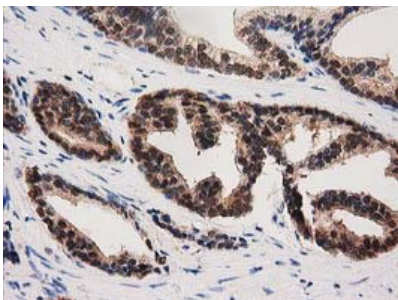
Western blot analysis of extracts (35ug) from 9 different cell lines by using anti-PYCRL monoclonal antibody.



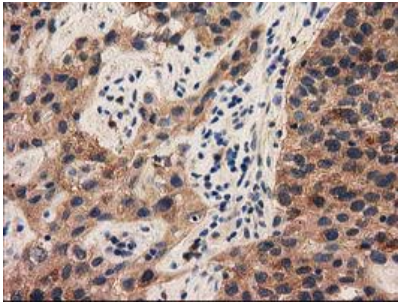
Immunohistochemical staining of paraffin-embedded Human pancreas tissue within the normal limits using anti-PYCRL mouse monoclonal antibody. (Heat-induced epitope retrieval by 10mM citric buffer)



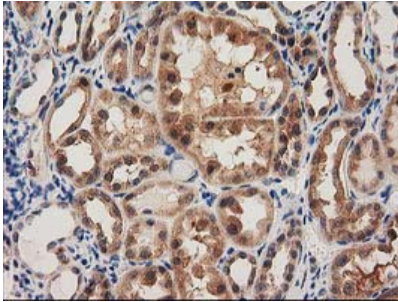
Immunohistochemical staining of paraffin-embedded Human thyroid tissue within the normal limits using anti-PYCRL mouse monoclonal antibody. (Heat-induced epitope retrieval by 10mM citric buffer)



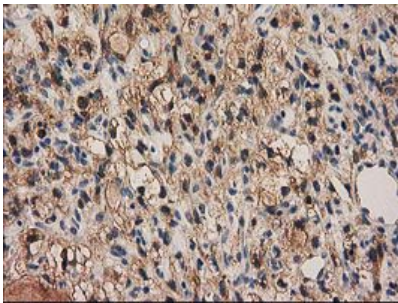
Immunohistochemical staining of paraffin-embedded Carcinoma of Human prostate tissue using anti-PYCRL mouse monoclonal antibody. (Heat-induced epitope retrieval by 10mM citric buffer)



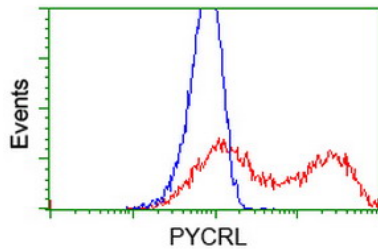
Immunohistochemical staining of paraffin-embedded Carcinoma of Human bladder tissue using anti-PYCRL mouse monoclonal antibody. (Heat-induced epitope retrieval by 10mM citric buffer)



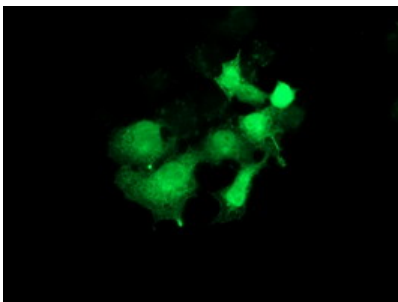
Immunohistochemical staining of paraffin-embedded Human Kidney tissue within the normal limits using anti-PYCRL mouse monoclonal antibody. (Heat-induced epitope retrieval by 10mM citric buffer)



Immunohistochemical staining of paraffin-embedded Carcinoma of Human kidney tissue using anti-PYCRL mouse monoclonal antibody. (Heat-induced epitope retrieval by 10mM citric buffer)



HEK293T cells transfected with either PYCRL (Myc-DDK-tagged) overexpress plasmid (Red) or empty vector control plasmid (Blue) were immunostained by anti-PYCRL antibody (M32428-2)



Anti-PYCRL mouse monoclonal antibody (M32428-2) immunofluorescent staining of COS7 cells transiently transfected by pCMV6-ENTRY PYCRL.

Submit a product review to [Biocompare.com](https://www.biocompare.com)

Submit a review of this product to [Biocompare.com](https://www.biocompare.com) to receive a \$20 Amazon.com giftcard! Your



reviews help your fellow scientists make the right decisions. Thank you for your contribution.

Anti-PYCR3 Mouse Monoclonal Antibody [Clone ID: OT11B12]

For Research Use Only. Not for use in diagnostic procedures.