

## Anti-beta Tubulin

Catalog Number: M32657-1

### About Tubb5

Tubulin is the major constituent of microtubules. It binds two moles of GTP, one at an exchangeable site on the beta chain and one at a non-exchangeable site on the alpha chain.

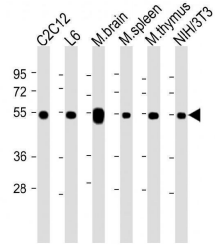
### Overview

Product Name	Anti-beta Tubulin
Reactive Species	Mouse, Rat
Description	Boster Bio Anti-beta Tubulin (Catalog # M32657-1). Tested in WB, Flow Cytometry, IHC-P application(s). This antibody reacts with Mouse, Rat.
Application	Flow Cytometry, IHC-P, WB
Clonality	Polyclonal
Formulation	Purified polyclonal antibody supplied in PBS with 0.09% (W/V) sodium azide.
Storage Instructions	Maintain refrigerated at 2-8°C for up to 2 weeks. For long-term storage, store at -20°C in small aliquots to prevent freeze-thaw cycles.
Host	Rabbit
Uniprot ID	P99024

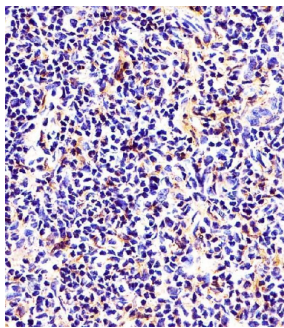
### Technical Details

Immunogen	This antibody is generated from a rabbit immunized with a KLH conjugated synthetic peptide between 46-78 amino acids from human.
Predicted Reactive Species	Bovine, C. elegans, Chicken, Drosophila, Hamster, Human, Monkey, Pig, Xenopus
Isotype	Rabbit IgG
Purification	This antibody is purified through a protein A column, followed by peptide affinity purification.
Suggested Dilutions	WB: 1:2000 IHC-P: 1:25 FC: 1:25

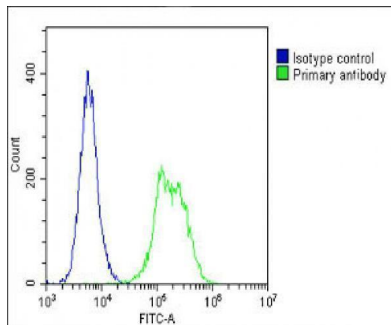
## Anti-beta Tubulin (M32657-1) Images



All lanes : Anti-beta Tubulin at 1:2000 dilution  
Lane 1: C2C12 whole cell lysate  
Lane 2: L6 whole cell lysate  
Lane 3: mouse brain lysate  
Lane 4: mouse spleen whole cell lysate  
Lane 5: mouse thymus lysate  
Lane 6: NIH/3T3 whole cell lysate  
Lysates/proteins at 20 µg per lane. Secondary Goat Anti-Rabbit IgG, (H+L), Peroxidase conjugated at 1/10000 dilution. Predicted band size : 50 kDa  
Blocking/Dilution buffer: 5% NFD/MTBST.



M32657-1 staining beta Tubulin in mouse thymus tissue sections by Immunohistochemistry (IHC-P -paraformaldehyde-fixed, paraffin-embedded sections). Tissue was fixed with formaldehyde and blocked with 3% BSA for 0.5 hour at room temperature; antigen retrieval was by heat mediation with a citrate buffer (pH6). Samples were incubated with primary antibody (1/25) for 1 hours at 37°C. A undiluted biotinylated goat polyvalent antibody was used as the secondary antibody.



Overlay histogram showing C2C12 cells stained with M32657-1 (green line). The cells were fixed with 2% paraformaldehyde (10 min) and then permeabilized with 90% methanol for 10 min. The cells were then incubated in 2% bovine serum albumin to block non-specific protein-protein interactions followed by the antibody (M32657-1, 1:25 dilution) for 60 min at 37°C. The secondary antibody used was Goat-Anti-Rabbit IgG, DyLight® 488 Conjugated Highly Cross-Adsorbed at 1/200 dilution for 40 min at 37°C. Isotype control antibody (blue line) was rabbit IgG1 (1g/1x10<sup>6</sup> cells) used under the same conditions. Acquisition of >10,000 events was performed.

### Submit a product review to Biocompare.com

Submit a review of this product to Biocompare.com to receive a \$20 Amazon.com giftcard! Your reviews help your fellow scientists make the right decisions. Thank you for your contribution.



Anti-beta Tubulin

For Research Use Only. Not for use in diagnostic procedures.