

Anti-SCD1 Antibody (Monoclonal, 31S66)

Catalog Number: M32769

About Scd1

Enables metal ion binding activity; palmitoyl-CoA 9-desaturase activity; and stearoyl-CoA 9-desaturase activity. Involved in several processes, including positive regulation of cold-induced thermogenesis; sterol homeostasis; and tarsal gland development. Acts upstream of or within several processes, including brown fat cell differentiation; monounsaturated fatty acid biosynthetic process; and white fat cell differentiation. Located in endoplasmic reticulum membrane. Is expressed in several structures, including adipose tissue; central nervous system; cranium; integumental system; and liver. Orthologous to human SCD (stearoyl-CoA desaturase).

Overview

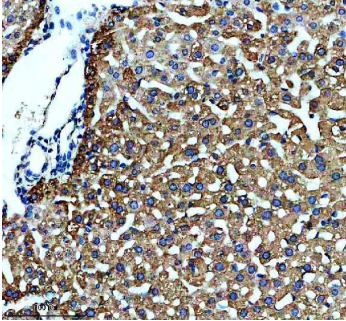
Product Name	Anti-SCD1 Antibody (Monoclonal, 31S66)
Reactive Species	Mouse, Rat
Description	Boster Bio Anti-SCD1 Antibody (Monoclonal, 31S66) catalog # M32769. Tested in WB, IHC, Flow Cytometry applications. This antibody reacts with Mouse, Rat.
Application	Flow Cytometry, IHC, WB
Clonality	Monoclonal 31S66
Formulation	Rabbit IgG in stabilizing components, phosphate buffered saline, pH 7.4, 150mM NaCl, 0.02% sodium azide and 50% glycerol. This antibody is supplied in a stabilized formulation. Compatibility with conjugation reactions depends on the chemistry of the conjugation method used. For conjugation methods that are not compatible with the stabilizing components present in this formulation, a carrier-free antibody format is required.
Storage Instructions	Store at -20°C for one year. For short term storage and frequent use, store at 4°C for up to one month. Avoid repeated freeze-thaw cycles.
Host	Rabbit
Uniprot ID	P13516

Technical Details

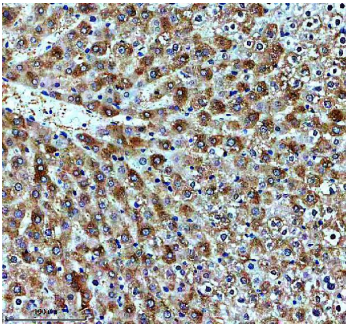
Immunogen	Synthetic peptide within mouse SCD1 aa 3-48.
Form	Liquid
Concentration	500 ug/ml
Purification	Protein A affinity purified.
Suggested Dilutions	Western blot, 1:500-2000 Immunohistochemistry, 1:50-200

Flow Cytometry (Fixed), 1:50-200

Anti-SCD1 Antibody (Monoclonal, 31S66) (M32769) Images



IHC analysis of SCD1 using anti-SCD1 antibody (M32769). SCD1 was detected in a paraffin-embedded section of mouse liver tissue. Heat mediated antigen retrieval was performed in EDTA buffer (pH 8.0, epitope retrieval solution). The tissue section was blocked with 10% goat serum. The tissue section was then incubated with 1:50 rabbit anti-SCD1 Antibody (M32769) overnight at 4°C. Peroxidase Conjugated Goat Anti-rabbit IgG was used as secondary antibody and incubated for 30 minutes at 37°C. The tissue section was developed using HRP Conjugated Rabbit IgG Super Vision Assay Kit (Catalog # SV0002) with DAB as the chromogen.



IHC analysis of SCD1 using anti-SCD1 antibody (M32769). SCD1 was detected in a paraffin-embedded section of rat liver tissue. Heat mediated antigen retrieval was performed in EDTA buffer (pH 8.0, epitope retrieval solution). The tissue section was blocked with 10% goat serum. The tissue section was then incubated with 1:50 rabbit anti-SCD1 Antibody (M32769) overnight at 4°C. Peroxidase Conjugated Goat Anti-rabbit IgG was used as secondary antibody and incubated for 30 minutes at 37°C. The tissue section was developed using HRP Conjugated Rabbit IgG Super Vision Assay Kit (Catalog # SV0002) with DAB as the chromogen.

Submit a product review to [Biocompare.com](https://www.biocompare.com)

Submit a review of this product to [Biocompare.com](https://www.biocompare.com) to receive a \$20 Amazon.com giftcard! Your reviews help your fellow scientists make the right decisions. Thank you for your contribution.



Anti-SCD1 Antibody (Monoclonal, 31S66)

For Research Use Only. Not for use in diagnostic procedures.