

## Anti-Mouse IgG2b Rabbit Monoclonal Antibody, Clone#RM108

Catalog Number: M33092

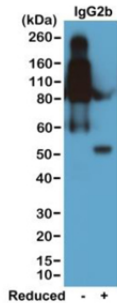
### Overview

Product Name	Anti-Mouse IgG2b Rabbit Monoclonal Antibody, Clone#RM108
Reactive Species	Mouse
Description	Boster Bio Anti-Mouse IgG2b Rabbit Monoclonal Antibody, Clone#RM108 (Catalog # M33092). Tested in ELISA, WB applications. This antibody reacts with Mouse.
Application	ELISA, WB
Clonality	Monoclonal RM108
Formulation	50% Glycerol/PBS with 1% stabilizing protein and 0.09% sodium azide This antibody is supplied in a stabilized formulation. Compatibility with conjugation reactions depends on the chemistry of the conjugation method used. For conjugation methods that are not compatible with the stabilizing components present in this formulation, a carrier-free antibody format is required.
Storage Instructions	Store at -20°C for one year. Avoid repeated freeze-thaw cycles.
Host	Rabbit
Uniprot ID	P01867

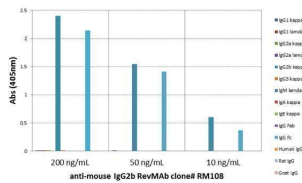
### Technical Details

Immunogen	Mouse IgG2b
Cross Reactivity	This antibody reacts to the Fc region of mouse IgG2b. No cross-reactivity with mouse IgG1, IgG2a, IgG3, IgM, IgA, IgE, human IgG, rat IgG, or goat IgG.
Isotype	Rabbit IgG
Form	Liquid
Concentration	1 mg/mL
Purification	Protein A affinity purified from an animal origin-free culture supernatant
Suggested Dilutions	ELISA: 0.005 ug/mL - 0.2 ug/mL WB: 0.1 ug/mL-0.5 ug/mL.

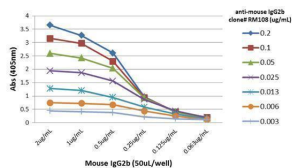
## Anti-Mouse IgG2b Rabbit Monoclonal Antibody, Clone#RM108 (M33092) Images



Western Blotting result Western blot of nonreduced(-) and reduced(+) mouse IgG2b (20ng/lane), using 0.2ug/mL of clone RM108. This antibody reacted to nonreduced IgG2b (~150 kDa) much stronger than the reduced Gamma 2b(~50 kDa).



ELISA of mouse immunoglobulins shows RM108 reacted to the Fc region of mouse IgG2b; no cross reactivity with IgG1, IgG2a, IgG3, IgM, IgA, IgE, human IgG, rat IgG, or goat IgG. The plate was coated with 50 ng/well of different immunoglobulins. 200 ng/mL, 50 ng/mL, or 10 ng/mL of RM108 was used as the primary antibody. An alkaline phosphatase conjugated anti-rabbit IgG as the secondary antibody.



ELISA result showing specificity A titer ELISA of mouse IgG2b. The plate was coated with different amounts of mouse IgG2b. A serial dilution of RM108 was used as the primary antibody. An alkaline phosphatase conjugated anti-rabbit IgG as the secondary antibody.

## 1 Publications Citing This Product

1. PubMed ID: 26935134, Characterization of bone marrow-derived mesenchymal stem cells from dimethylallyl glycine-preconditioned mice: Evaluation of the feasibility of dimethylallyl glycine as a mobilization agent

Visit [bosterbio.com/anti-mouse-igg2b-rabbit-monoclonal-antibody-clone-rm108-m33092-boster.html](http://bosterbio.com/anti-mouse-igg2b-rabbit-monoclonal-antibody-clone-rm108-m33092-boster.html) to see all 1 publications.

## Submit a product review to Biocompare.com

Submit a review of this product to Biocompare.com to receive a \$20 Amazon.com giftcard! Your reviews help your fellow scientists make the right decisions. Thank you for your contribution.



Anti-Mouse IgG2b Rabbit Monoclonal Antibody, Clone#RM108

For Research Use Only. Not for use in diagnostic procedures.