

Anti-C1ORF151 (MINOS1) Mouse Monoclonal Antibody [Clone ID: OTI4H7]

Catalog Number: M33915

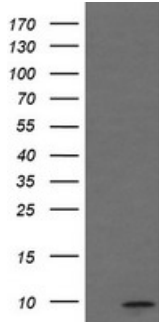
Overview

Product Name	Anti-C1ORF151 (MINOS1) Mouse Monoclonal Antibody [Clone ID: OTI4H7]
Reactive Species	Human
Description	Boster Bio C1orf151 mouse monoclonal antibody, clone OTI4H7 (formerly 4H7). Catalog# M33915. Tested in IHC, WB. This antibody reacts with Human.
Application	IHC, WB
Clonality	Monoclonal OTI4H7
Formulation	PBS (pH 7.3) containing 1% stabilizing protein, 50% glycerol and 0.02% sodium azide. This antibody is supplied in a stabilized formulation. Compatibility with conjugation reactions depends on the chemistry of the conjugation method used. For conjugation methods that are not compatible with the stabilizing components present in this formulation, a carrier-free antibody format is required.
Storage Instructions	Store at -20°C as received.
Host	Mouse
Uniprot ID	Q5TGZ0

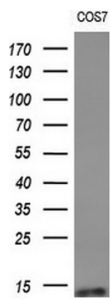
Technical Details

Immunogen	Full length human recombinant protein of human C1orf151 (NP_001007535) produced in HEK293T cell.
Isotype	IgG2b
Concentration	1 mg/ml
Purification	Purified from mouse ascites fluids or tissue culture supernatant by affinity chromatography (protein A/G)
Suggested Dilutions	WB 1:1000 IHC 1:150

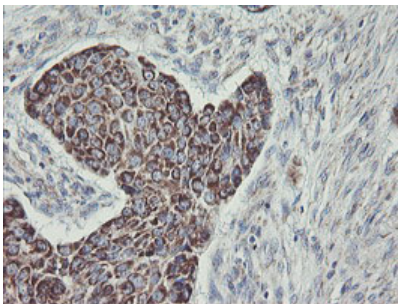
Anti-C1ORF151 (MINOS1) Mouse Monoclonal Antibody [Clone ID: OTI4H7] (M33915) Images



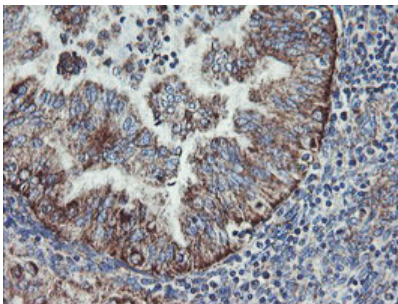
HEK293T cells were transfected with the pCMV6-ENTRY control (Left lane) or pCMV6-ENTRY C1orf151 (Right lane) cDNA for 48 hrs and lysed. Equivalent amounts of cell lysates (5 ug per lane) were separated by SDS-PAGE and immunoblotted with anti-C1orf151.



Western blot analysis of extracts (10ug) from 5 different cell lines by using anti-C1orf151 monoclonal antibody (1:200).

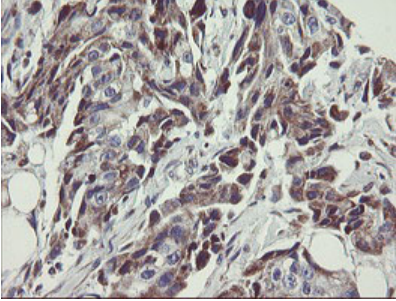
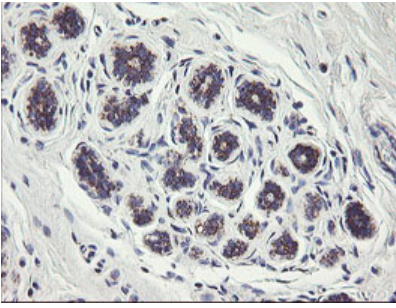


Immunohistochemical staining of paraffin-embedded Carcinoma of Human lung tissue using anti-C1orf151 mouse monoclonal antibody. (Heat-induced epitope retrieval by 10mM citric buffer)

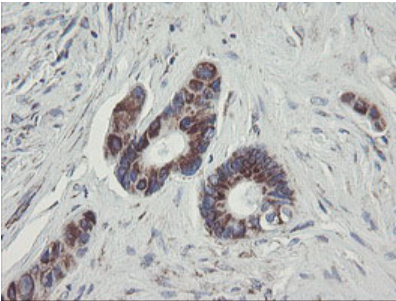


Immunohistochemical staining of paraffin-embedded Adenocarcinoma of Human endometrium tissue using anti-C1orf151 mouse monoclonal antibody. (Heat-induced epitope retrieval by 10mM citric buffer)

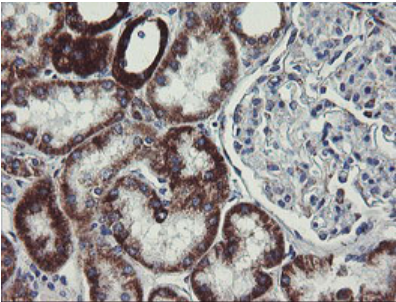
Immunohistochemical staining of paraffin-embedded Human breast tissue within the normal limits using anti-C1orf151 mouse monoclonal antibody. (Heat-induced epitope retrieval by 10mM citric buffer)



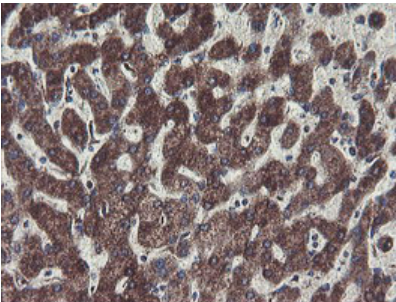
Immunohistochemical staining of paraffin-embedded Adenocarcinoma of Human breast tissue using anti-C1orf151 mouse monoclonal antibody. (Heat-induced epitope retrieval by 10mM citric buffer)



Immunohistochemical staining of paraffin-embedded Human colon tissue within the normal limits using anti-C1orf151 mouse monoclonal antibody. (Heat-induced epitope retrieval by 10mM citric buffer)

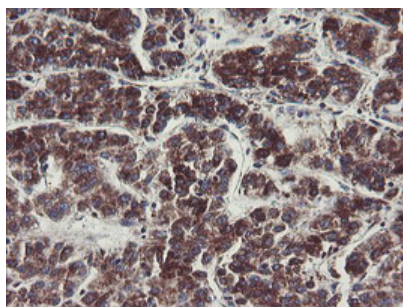


Immunohistochemical staining of paraffin-embedded Human Kidney tissue within the normal limits using anti-C1orf151 mouse monoclonal antibody. (Heat-induced epitope retrieval by 10mM citric buffer)



Immunohistochemical staining of paraffin-embedded Human liver tissue within the normal limits using anti-C1orf151 mouse monoclonal antibody. (Heat-induced epitope retrieval by 10mM citric buffer)

Immunohistochemical staining of paraffin-embedded Carcinoma of Human liver tissue using anti-C1orf151 mouse



monoclonal antibody. (Heat-induced epitope retrieval by 10mM citric buffer)

Submit a product review to [Biocompare.com](https://www.biocompare.com)

Submit a review of this product to [Biocompare.com](https://www.biocompare.com) to receive a \$20 Amazon.com giftcard! Your reviews help your fellow scientists make the right decisions. Thank you for your contribution.



Anti-C1ORF151 (MINOS1) Mouse Monoclonal Antibody [Clone ID: OTI4H7]

For Research Use Only. Not for use in diagnostic procedures.