

Anti-BACH1 Mouse Monoclonal Antibody [Clone ID: OTI4E11]

Catalog Number: M33956

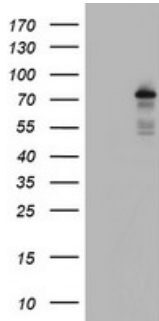
Overview

Product Name	Anti-BACH1 Mouse Monoclonal Antibody [Clone ID: OTI4E11]
Reactive Species	Human
Description	Boster Bio BACH1 mouse monoclonal antibody, clone OTI4E11 (formerly 4E11). Catalog# M33956. Tested in FC, IHC, WB. This antibody reacts with Human.
Application	Flow Cytometry, IHC, WB
Clonality	Monoclonal OTI4E11
Formulation	PBS (pH 7.3) containing 1% stabilizing protein, 50% glycerol and 0.02% sodium azide. This antibody is supplied in a stabilized formulation. Compatibility with conjugation reactions depends on the chemistry of the conjugation method used. For conjugation methods that are not compatible with the stabilizing components present in this formulation, a carrier-free antibody format is required.
Storage Instructions	Store at -20°C as received.
Host	Mouse
Uniprot ID	O14867

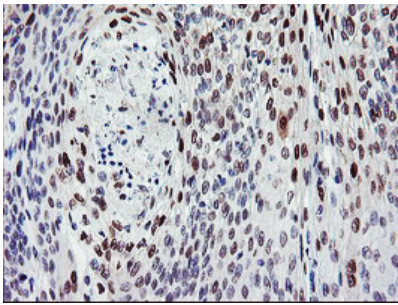
Technical Details

Immunogen	Full length human recombinant protein of human BACH1 (NP_996749) produced in HEK293T cell.
Isotype	IgG1
Concentration	1 mg/ml
Purification	Purified from mouse ascites fluids or tissue culture supernatant by affinity chromatography (protein A/G)
Suggested Dilutions	WB 1:2000 IHC 1:150 Flow Cytometry 1:100

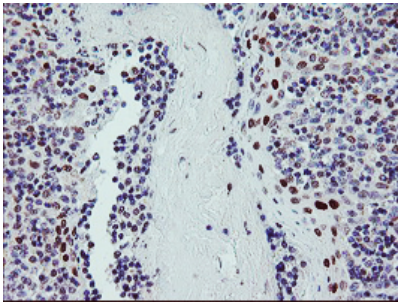
Anti-BACH1 Mouse Monoclonal Antibody [Clone ID: OTI4E11] (M33956) Images



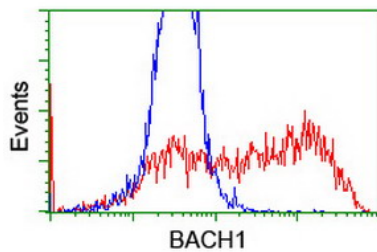
HEK293T cells were transfected with the pCMV6-ENTRY control (Left lane) or pCMV6-ENTRY BACH1 (Right lane) cDNA for 48 hrs and lysed. Equivalent amounts of cell lysates (5 ug per lane) were separated by SDS-PAGE and immunoblotted with anti-BACH1.



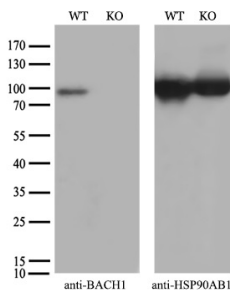
Immunohistochemical staining of paraffin-embedded Carcinoma of Human bladder tissue using anti-BACH1 mouse monoclonal antibody. (Heat-induced epitope retrieval by 10mM citric buffer)



Immunohistochemical staining of paraffin-embedded Human tonsil within the normal limits using anti-BACH1 mouse monoclonal antibody. (Heat-induced epitope retrieval by 10mM citric buffer)



HEK293T cells transfected with either BACH1 (Myc-DDK-tagged) overexpress plasmid (Red) or empty vector control plasmid (Blue) were immunostained by anti-BACH1 antibody (M33956)



Equivalent amounts of cell lysates (10 ug per lane) of wild-type HeLa cells (WT) and BACH1-Knockout HeLa cells (KO) were separated by SDS-PAGE and immunoblotted with anti-BACH1 monoclonal antibody M33956 (1:2000). Then the blotted membrane was stripped and reprobed with anti-HSP90 antibody as a loading control.

Submit a product review to Biocompare.com

Submit a review of this product to Biocompare.com to receive a \$20 Amazon.com giftcard! Your reviews help your fellow scientists make the right decisions. Thank you for your contribution.



Anti-BACH1 Mouse Monoclonal Antibody [Clone ID: OTI4E11]

For Research Use Only. Not for use in diagnostic procedures.