

Anti-SODM Antibody

Catalog Number: M33970-1

About SOD2

Destroys superoxide anion radicals which are normally produced within the cells and which are toxic to biological systems.

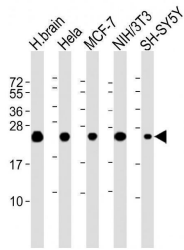
Overview

Product Name	Anti-SODM Antibody
Reactive Species	Human, Mouse
Description	Boster Bio Anti-SODM Antibody (Catalog # M33970-1). Tested in WB, IHC-P, Flow Cytometry application(s). This antibody reacts with Human, Mouse.
Application	Flow Cytometry, IHC-P, WB
Clonality	Monoclonal 1559CT572.3.83
Formulation	Purified monoclonal antibody supplied in PBS with 0.09% (W/V) sodium azide.
Storage Instructions	Maintain refrigerated at 2-8°C for up to 2 weeks. For long-term storage, store at -20°C in small aliquots to prevent freeze-thaw cycles.
Host	Mouse
Uniprot ID	P04179

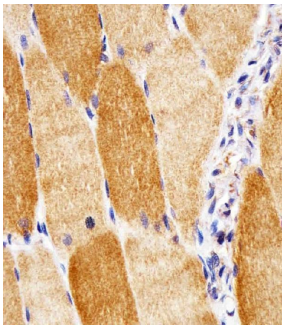
Technical Details

Immunogen	This SODM antibody is generated from a mouse immunized with a recombinant protein of human SODM.
Predicted Reactive Species	Bovine, C. elegans, Chicken, Drosophila, Hamster, Human, Monkey, Pig, Xenopus
Isotype	IgG1,kappa
Purification	This antibody is purified through a protein G column, followed by dialysis against PBS.
Suggested Dilutions	WB: 1:2000 IHC-P: 1:25 FC: 1:25

Anti-SODM Antibody (M33970-1) Images



All lanes : Anti-SODM Antibody at 1:2000 dilution
Lane 1: human brain lysate
Lane 2: HeLa whole cell lysate
Lane 3: MCF-7 whole cell lysate
Lane 4: NIH/3T3 whole cell lysate
Lane 5: SH-SY5Y whole cell lysate
Lysates/proteins at 20 µg per lane. Secondary Goat Anti-mouse IgG, (H+L), Peroxidase conjugated at 1/10000 dilution. Predicted band size : 25 kDa
Blocking/Dilution buffer: 5% NFDM/TBST.



M33970-1 staining SODM in human skeletal muscle sections by Immunohistochemistry (IHC-P -paraformaldehyde-fixed, paraffin-embedded sections). Tissue was fixed with formaldehyde and blocked with 3% BSA for 0.5 hour at room temperature; antigen retrieval was by heat mediation with a citrate buffer (pH6). Samples were incubated with primary antibody (1/25) for 1 hours at 37°C. A undiluted biotinylated goat polyvalent antibody was used as the secondary antibody.



M33970-1 staining SODM in human brain sections by Immunohistochemistry (IHC-P -paraformaldehyde-fixed, paraffin-embedded sections). Tissue was fixed with formaldehyde and blocked with 3% BSA for 0.5 hour at room temperature; antigen retrieval was by heat mediation with a citrate buffer (pH6). Samples were incubated with primary antibody (1/25) for 1 hours at 37°C. A undiluted biotinylated goat polyvalent antibody was used as the secondary antibody.

Submit a product review to Biocompare.com

Submit a review of this product to Biocompare.com to receive a \$20 Amazon.com giftcard! Your reviews help your fellow scientists make the right decisions. Thank you for your contribution.



Anti-SODM Antibody

For Research Use Only. Not for use in diagnostic procedures.