

Anti-AFP/Alpha 1 Fetoprotein Monoclonal Antibody

Catalog Number: MA1001

About Afp

Alpha-fetoprotein (AFP) is a major plasma protein in the fetus, where it is produced by the yolk sac and liver. Direct confirmation of the assignment of the AFP gene to chromosome 4 by in situ hybridization was provided by Harper and Dugaiczky (1983), who placed the gene in the q11-q22 region, the same region as the albumin gene. Structure and evolution of human alpha-fetoprotein deduced from partial sequence of cloned cDNA. As the major fetal serum protein, Alpha-fetoprotein is not essential for embryonic development but is required for female fertility.

Overview

Product Name	Anti-AFP/Alpha 1 Fetoprotein Monoclonal Antibody
Reactive Species	Human
Description	Boster Bio Anti-AFP/Alpha 1 Fetoprotein Monoclonal Antibody catalog # MA1001. Tested in IHC applications. This antibody reacts with Human.
Application	IHC
Clonality	Monoclonal C3
Formulation	Mouse ascites fluid, 1.2% sodium acetate, 2mg BSA, with 0.01mg NaN3 as preservative.
Storage Instructions	Store at -20°C for one year from date of receipt. After reconstitution, at 4°C for one month. It can also be aliquotted and stored frozen at -20°C for six months. Avoid repeated freeze-thaw cycles.
Host	Mouse
Uniprot ID	P02773

Technical Details

Immunogen	Human alpha-fetoprotein.
Predicted Reactive Species	Chicken
Recommended Detection Systems	Boster recommends HRP Conjugated anti-Mouse IgG Super Vision Assay Kit (SV0001-1) for IHC(P).
Cross Reactivity	No cross-reactivity with other proteins
Isotype	Mouse IgG2a
Form	Lyophilized
Concentration	Adding 1 ml of PBS buffer will yield a concentration of 100 ug/ml.
Purification	Ascites

Suggested Dilutions

Dilute the sample so that the expected range of concentrations fall within the detection range of this kit.

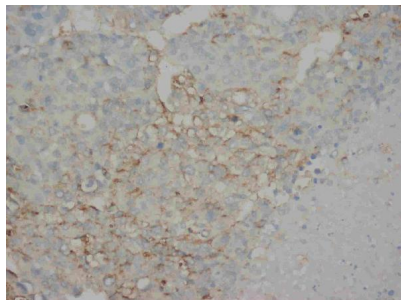
If the expected range of concentration is unknown, a pilot test should be conducted to decide the optimal dilution ratio for your samples.

Some PubMed article(s) citing the expression level of this target are as follows:

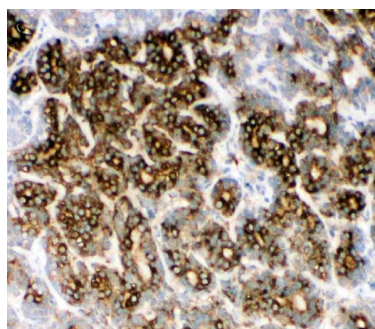
Boster Bio's internal QC testing used:

Immunohistochemistry (Paraffin-embedded Section), 2-4ug/ml, Human, By Heat

Anti-AFP/Alpha 1 Fetoprotein Monoclonal Antibody (MA1001) Images



Anti-AFP antibody (monoclonal), MA1001, IHC(P)
IHC(P): Human Liver Cancer Tissue



Anti-AFP antibody (monoclonal), MA1001, IHC(P)
IHC(P): Human Hepatitis Tissue

11 Publications Citing This Product

1. PubMed ID: 26235702, Adipose tissue-derived mesenchymal stem cells differentiated into hepatocyte-like cells in vivo and in vitro
2. PubMed ID: 25576343, Extracellular regulated protein kinases 1/2 phosphorylation is required for hepatic differentiation of human umbilical cord-derived mesenchymal stem cells
3. PubMed ID: 29246405, Selective tropism of liver stem cells to hepatocellular carcinoma in vivo.

Visit bosterbio.com/anti-afp-antibody-monoclonal-ma1001-boster.html to see all 11 publications.

Submit a product review to Biocompare.com

Submit a review of this product to Biocompare.com to receive a \$20 Amazon.com giftcard! Your reviews help your fellow scientists make the right decisions. Thank you for your contribution.



Anti-AFP/Alpha 1 Fetoprotein Monoclonal Antibody