

Anti-Cathepsin L Ctsl Antibody (Monoclonal, 33/2)

Catalog Number: MA1014

About Ctsl

Cathepsin L is a lysosomal cysteine proteinase with a major role in intracellular protein catabolism. It also shows the most potent collagenolytic and elastinolytic activity in vitro of any of the cathepsins. Cathepsin L has been implicated in pathologic processes including myofibril necrosis in myopathies and in myocardial ischemia, and in the renal tubular response to proteinuria. Human liver cathepsin L consists of a heavy chain of about 25 kD and a light chain of about 5 kD. The gene is mapped to 9q21-q22. Cathepsin L is required for endothelial progenitor cell-induced neovascularization.

Overview

Product Name	Anti-Cathepsin L Ctsl Antibody (Monoclonal, 33/2)
Reactive Species	Human, Mouse, Rat
Description	Boster Bio Anti-Cathepsin L Ctsl Antibody (Monoclonal, 33/2) catalog # MA1014. Tested in IHC, WB applications. This antibody reacts with Human, Mouse, Rat.
Application	IHC, WB
Clonality	Monoclonal 33/2
Formulation	Mouse ascites fluid, 1.2% sodium acetate, 2mg BSA, with 0.01mg NaN ₃ as preservative.
Storage Instructions	Store at -20°C for one year from date of receipt. After reconstitution, at 4°C for one month. It can also be aliquotted and stored frozen at -20°C for six months. Avoid repeated freeze-thaw cycles.
Host	Mouse
Uniprot ID	P07154

Technical Details

Immunogen	Procathepsin L isolated from the human lung cancer cell line EPLC 32M1.
Predicted Reactive Species	Monkey
Recommended Detection Systems	Boster recommends Enhanced Chemiluminescent Kit with anti-Mouse IgG (EK1001) for Western blot, and HRP Conjugated anti-Mouse IgG Super Vision Assay Kit (SV0001-1) for IHC(F).
Cross Reactivity	No cross-reactivity with other proteins
Isotype	Mouse IgG1
Form	Lyophilized
Concentration	Adding 1 ml of PBS buffer will yield a concentration of 100 ug/ml.

Purification	Ascites
Suggested Dilutions	<p>Dilute the sample so that the expected range of concentrations fall within the detection range of this kit.</p> <p>If the expected range of concentration is unknown, a pilot test should be conducted to decide the optimal dilution ratio for your samples.</p> <p>Some PubMed article(s) citing the expression level of this target are as follows:</p> <p>Boster Bio's internal QC testing used:</p> <p>Immunohistochemistry (Frozen Section), 4ug/ml, Human, mouse, rat, -</p> <p>Western blot, 0.1-0.5ug/ml, Human, mouse, rat</p>

Anti-Cathepsin L Ctsl Antibody (Monoclonal, 33/2) (MA1014) Images

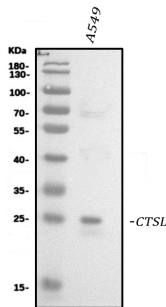


Figure 1. Western blot analysis of Cathepsin L using anti-Cathepsin L antibody (MA1014).

Electrophoresis was performed on a 5-20% SDS-PAGE gel at 70V (Stacking gel) / 90V (Resolving gel) for 2-3 hours. The sample well of each lane was loaded with 30 ug of sample under reducing conditions.

Lane 1: human A549 whole cell lysates.

After electrophoresis, proteins were transferred to a nitrocellulose membrane at 150 mA for 50-90 minutes. Blocked the membrane with 5% non-fat milk/TBS for 1.5 hour at RT. The membrane was incubated with mouse anti-Cathepsin L antigen affinity purified monoclonal antibody (Catalog # MA1014) at 0.5 ug/mL overnight at 4°C, then washed with TBS-0.1%Tween 3 times with 5 minutes each and probed with a goat anti-mouse IgG-HRP secondary antibody at a dilution of 1:10000 for 1.5 hour at RT. The signal is developed using an Enhanced Chemiluminescent detection (ECL) kit (Catalog # EK1001) with Tanon 5200 system. A specific band was detected for Cathepsin L at approximately 25 kDa. The expected band size for Cathepsin L is at 38 kDa.

Submit a product review to Biocompare.com

Submit a review of this product to Biocompare.com to receive a \$20 Amazon.com giftcard! Your reviews help your fellow scientists make the right decisions. Thank you for your contribution.



Anti-Cathepsin L Ctsl Antibody (Monoclonal, 33/2)